



Panco®

Bun Pans and Pan Racks



Phone: 1-800-441-8440 • F: 302-653-2065 • www.eaglegrp.com

Panco®

Open Utility Racks

18 Series Deluxe Racks — narrow opening EG60.00A

For 18" x 26" trays. Features 5" casters, front-to-back and side-to-side cross bracing, and 1" square tubing. Aluminum models shipped knocked down. Stainless steel models are welded and shipped fully assembled.

Accessories: casters with locking brakes, rotary donut bumpers, perimeter bumper*, vertical corner bumpers, and pan stops.

overall dimensions width x depth x height	sliding space	pan capacity	model #
ALUMINUM*			
21" x 26½" x 64¼"	5"	11	OUR-1811-5
21" x 26½" x 64¼"	3"	18	OUR-1818-3
21" x 26½" x 69¼"	3"	20	OUR-1820-3
21" x 26½" x 69¼"	2¼"	24	OUR-1824-2
STAINLESS STEEL			
20½" X 28" X 66½"	5"	11	OUR-1811-5-SR
20½" X 28" X 66½"	3"	18	OUR-1818-3-SR
20½" X 28" X 72⅞"	3"	20	OUR-1820-3-SR
20½" X 28" X 66½"	2¼"	24	OUR-1824-2-SR

* Factory welded assembly required for aluminum models specified with perimeter bumper.

OPTIONAL CART COVERS FOR 18 SERIES DELUXE RACKS

Fire, mildew, and rot resistant. Easy to clean, waterproof, and feature dual zippers. Available in white PVC laminate or transparent. White laminate features a clear window on one narrow side.

overall dimensions width x depth x height	fits units	WHITE model #	TRANSPARENT model #
24" x 30" x 61½"	OUR-1811-5	P2RCW-3	P2RC-3
24" x 30" x 61½"	OUR-1818-3	P2RCW-3	P2RC-3
24" x 30" x 61½"	OUR-1824-3	P2RCW-3	P2RC-3
24" x 30" x 69"	OUR-1820-3	P2RCW-4	P2RC-4



18 series rack



rack with optional
transparent cart
cover



rack with optional
white cart cover

18 Series Working Height Racks EG60.00B

Features include top pan guides, outrigger pan mounts, and 5" swivel casters. Aluminum models shipped knocked down. Stainless steel models assembled. Dimensions shown include caster hub. Add 2¾" to depth for caster trail.

Accessories: casters with locking brakes, rotary donut bumpers, vertical corner bumpers, and pan stops.



working height rack with optional
maple top and pans

overall dimensions width x depth x height	sliding space	pan capacity**	ALUMINUM* model #	STAINLESS STEEL model #
22" x 28⅞" x 35"	3"	9	OUR-1807-3	OUR-1807-3-SR

* Factory assembly available for all aluminum models.

** Total pan capacity is 9 when outrigger pan mounts are used.

OPTIONAL TOPS FOR WORKING HEIGHT RACKS

description	model #
Maple Top	606376
Poly Top	606377
Stainless Steel Top	606378

26 Series Racks — wide opening NSF

EG60.01

For 18" x 26" trays. Features include 5" casters and front-to-back/side-to-side cross bracing. Aluminum models shipped knocked down. Stainless steel models shipped assembled. Dimensions shown include caster hub. Add 2 3/4" to depth for caster trail.

Accessories: casters with locking brakes, rotary donut bumpers, perimeter bumper*, vertical corner bumpers, and pan stops.

overall dimensions width x depth x height	sliding space	pan capacity	model #
ALUMINUM*			
28 1/2" x 19" x 69"	5"	11	OUR-2611-5
28 1/2" x 20" x 66 3/8"	3"	18	OUR-2618-3
28 1/2" x 20" x 72"	3"	20	OUR-2620-3
28 1/2" x 20" x 66 3/8"	2 1/4"	24	OUR-2624-2
STAINLESS STEEL			
28 1/2" X 20" X 66 3/8"	5"	11	OUR-2611-5-SR
28 1/2" X 20" X 66 3/8"	3"	18	OUR-2618-3-SR
28 1/2" X 20" X 72 1/2"	3"	20	OUR-2620-3-SR
28 1/2" X 20" X 66 3/8"	2 1/4"	24	OUR-2624-2-SR



26 series rack

* Factory welded assembly required for aluminum models specified with perimeter bumper.

All-Welded Pan Racks NSF

EG60.02

Heavy duty all-welded aluminum construction. Features 5" stem casters, 1" square tubing, and side-to-side cross bracing. 18 Series front-load and 26 Series side-load units available.

Accessories: casters with locking brakes, rotary donut bumpers, perimeter bumper, vertical corner bumpers, and pan stops.



all-welded rack

description	overall dimensions width x depth x height	sliding space	pan capacity	model #
side load	28 1/2" x 20" x 72 1/4"	5"	12	OUR-2612-5/W
side load	28 1/2" x 19" x 69"	3"	20	OUR-2620-3/W
side load	28 1/2" x 19" x 69"	2"	30	OUR-2630-2/W
front load	20 1/2" x 26" x 38"	3"	10	OUR-1810-3/W*
front load	20 1/2" x 26" x 69"	5"	12	OUR-1812-5/W
front load	20 1/2" x 26" x 69"	3"	20	OUR-1820-3/W
front load	20 1/2" x 26" x 69"	2"	30	OUR-1830-2/W

* Model #OUR-1810-3/W features stainless steel top. All others features open top.

Stainless Steel Racks NSF

EG60.03

For 12" x 20" pans. Stainless steel models only. 5" swivel casters. Features stainless steel channel tray slides. Shipped assembled. Dimensions shown include caster hub. Add 2 3/4" to depth for caster trail.

Accessories: casters with locking brakes, rotary donut bumpers, perimeter bumper, vertical corner bumpers, and pan stops.

description	overall dimensions width x depth x height	sliding space	pan capacity	model #
single width	16 5/8" x 22 3/4" x 64 1/2"	3"	18	OUR-1218-3-SR
double width	31 1/2" x 22 3/4" x 64 7/8"	3"	36	OUR-1236-3-SR



stainless steel rack

Panco®

Open Utility Racks



combination rack

Combination Racks NSF

EG60.04

For 12" x 20" pans, 18" x 26" sheet pans, or 14" x 18" trays. Aluminum models only. 5" swivel casters. Shipped assembled. Dimensions shown include caster hub. Add 2 3/4" to depth for caster trail.

Accessories: casters with locking brakes, rotary donut bumpers, perimeter bumper, vertical corner bumpers, and pan stops.

overall dimensions width x depth x height	sliding space	-----tray capacity-----			model #
		12" x 20" pan	18" x 26" pan	14" x 18" pan	
20 1/2" x 29 1/2" x 66 1/8"	5"	11	11	22	OUR-1211-5
20 1/2" x 29 1/2" x 66 1/2"	3"	18	18	36	OUR-1220-3

Carrier Racks NSF

EG60.05

For 20" x 20" utensil/glass racks. 5" swivel casters. Aluminum and stainless steel models available. Aluminum models shipped knocked down. Stainless steel models shipped assembled. Dimensions shown include caster hub. Add 2 3/4" to depth for caster trail.

Accessories: casters with locking brakes, rotary donut bumpers, perimeter bumper*, vertical corner bumpers, and pan stops.

overall dimensions width x depth x height	sliding space	pan capacity	model #
ALUMINUM			
22" x 20 1/2" x 69"	10"	6	OUR-2006-9A
22" x 20 1/2" x 65"	7"	8	OUR-2008-6A
STAINLESS STEEL			
22 3/4" X 22 1/2" X 65 3/4"	9"	6	OUR-2006-9SR
22 3/4" X 22 1/2" X 64 1/8"	6 1/2"	8	OUR-2008-6SR



carrier rack



double compartment rack

Double Compartment Racks NSF

EG60.06A

For 18" x 26" trays/pans. 5" swivel casters. Aluminum and stainless steel models available. All models shipped assembled. Dimensions shown include caster hub. Add 2 3/4" to depth for caster trail.

Accessories: casters with locking brakes, rotary donut bumpers, perimeter bumper, vertical corner bumpers, and pan stops.

overall dimensions width x depth x height	sliding space	pan capacity	ALUMINUM* model #	STAINLESS STEEL model #
40" x 28" x 66 1/2"	5"	22	OUR-1822-5	OUR-1822-5-SR
40" x 28" x 66 1/2"	3"	36	OUR-1836-3	OUR-1836-3-SR
40" x 28" x 66 1/2"	2 1/4"	48	OUR-1848-2	OUR-1848-2-SR

Four-Compartment Racks NSF

EG60.06B

For 10" x 14" trays or 14" x 18" trays. 5" swivel casters. Aluminum models only. Shipped assembled with center tray stop. Dimensions shown include caster hub. Add 2 1/4" to depth for caster trail.

Accessories: casters with locking brakes, rotary donut bumpers, perimeter bumper, and vertical corner bumpers.

overall dimensions width x depth x height	sliding space	-----tray capacity----- tray size quantity	model #
40" x 30" x 69 1/4"	4 1/2"	14" x 18" 52	OUR-1452-4
32" x 22" x 69 1/4"	4 1/2"	10" x 14" 52	OUR-1052-4-A
34 3/4" x 24 1/2" x 68 3/4"	4 1/2"	10" x 14 1/4" 52	OUR-1052-4-B



four compartment rack

Aluminum Racks with Side Panels NSF

EG60.07

For 18" x 26" trays. Features include 5" swivel casters. Aluminum models only.

Model #ORO-1840 is shipped knocked down. **Accessories available for model #ORO-1840 include** casters with locking brakes.

Model #OR-1840 is shipped assembled, and features solid top and bottom. **Accessories available for model #OR-1840 include** casters with locking brakes.

overall dimensions width x depth x height	description	sliding space	18" x 26" tray capacity	model #
20 3/4" x 28" x 70 3/4"	standard	1 1/2"	40	ORO-1840
20 3/8" x 28" x 70 3/4"	heavy duty	1 1/2"	40	OR-1840



heavy-duty
aluminum rack
with side panels

"Z" Type Nesting Racks NSF

EG60.29

For 18" x 26" pans. All-welded aluminum construction. When not in use, these racks take up less square footage than standard racks do by "nesting" inside each other. Features 5" plate casters.

Accessories: casters with locking brakes and vertical corner bumpers.

overall dimensions width x depth x height	sliding space	pan capacity	model #
20 1/2" x 26" x 69 1/2"	3"	20	OUR-1820-3-N
20 1/2" x 26" x 69 1/2"	2"	30	OUR-1830-2-N



"Z" type nesting rack

Panco®

Open Utility Racks

Vertical Storage Racks

EG60.09A

For 23" x 28" oval trays. Features include 5" swivel casters and bottom panel sloped toward center. Single-tier and double-tier models available. Aluminum and stainless steel. All units shipped assembled. Dimensions shown include caster hub. Add 2¾" to depth for caster trail.

Accessories: casters with locking brakes, rotary donut bumpers, and vertical corner bumpers.

overall dimensions width x depth x height	tray capacity	ALUMINUM* model #	STAINLESS STEEL model #
26¼" x 31¼" x 38½"	40	OTS-128-A	OTS-128-SR
26¼" x 31¼" x 66"	80	OTS-228-A*	OTS-288-SR*

*Double-tier models



vertical storage oval
tray rack



horizontal storage
oval tray rack

Horizontal Storage Racks NSF

EG60.09B

For 23" x 28" oval trays. All-welded aluminum models only.

Accessories: casters with locking brakes, rotary donut bumpers, perimeter bumper, vertical corner bumpers, and pan stops.

overall dimensions width x depth x height	sliding space	tray capacity	model #
26" x 30" x 69"	6"	10	OTR-2810-A/W
27" x 29½" x 72½"	3"	20	OTR-2820-A/W

Multiple Purpose Racks NSF

EG60.10

Adjustable universal slides accommodate almost any popular size tray or pan (see chart). 5" swivel casters. Slides adjustable in increments of 2½". Channel base. Aluminum models only. Shipped assembled.

Accessories: casters with locking brakes, pan stops and rotary bumpers.

overall dimensions width x depth x height	universal slides supplied	model #
25⅜" x 28" x 69⅝"	10 sets	MPR-10
25⅜" x 28" x 69⅝"	12 sets	MPR-12

PAN/TRAY SIZES FOR MULTIPLE PURPOSE RACKS

width x depth x height	width x depth x height	width x depth x height
10⅞" x 19¾" x 2¼"	12" x 18" x 6"	18" x 26" x 1"
10⅞" x 19¾" x 3½"	14" x 18"	18" x 26" x 2⅝"
11⅞" x 20" x 6½"	15" x 20"	18" x 26" x 3½"
12" x 20" x 2½"	20" x 20"	18" x 26" x 4"
12" x 20" x 4"	22½" x 20½" x 6½"	18" x 26"
12" x 20" x 6"	20" x 22" x 1¼"	18" x 13" x 1"
12" x 18" x 2½"	20" x 22" x 2¼"	18" x 13" x 4"
12" x 18" x 4"	20" x 22" x 3½"	



multi-purpose rack

Universal Angle Racks NSF

EG60.12

Features include adjustable universal slides, solid top, solid bottom, and 5" swivel casters. Each set of universal slides holds two 12" x 20" pans, plus one 18" x 26" sheet pan, one 15" x 20" tray or one 20" x 20" rack. Aluminum and stainless steel models available. Shipped assembled.

Accessories: casters with locking brakes, perimeter bumper, pan stops, and extra universal angle slides.

overall dimensions width x depth x height	sliding space	number of slides	ALUMINUM* model #	STAINLESS STEEL model #
23½" x 26" x 64⅜"	2½"	11	UAR-64-A	UAR-64-SR
23½" x 26" x 69⅝"	2½"	13	UAR-70-A	UAR-70-S

*All stainless steel units are supplied with standard extruded aluminum universal slides.

Roll-In Refrigerator Racks

EG60.13A EG60.13B

Models UARR employ universal slides. Units fit specifications of most major refrigerator manufacturers, including Hobart, Traulsen, and Victory. Features dolly frame with recessed plate casters. Aluminum and stainless steel models available. Shipped assembled.

Accessories: casters with locking brakes and pan stops.



roll-in refrigerated rack

overall dimensions width x depth x height	sliding space	number of slides	tray sizes	model #
ALUMINUM				
20½" x 26" x 64"	2¼"	18" x 26"	24	OURR-1824-2-A
20½" x 26" x 64"	3"	18" x 26"	18	OURR-1818-3-A
20½" x 26" x 64"	5"	18" x 26"	11	OURR-1811-5-A
23" x 26" x 64"	3"	12" x 20"	36*	OURR-2036-3-A
24½" x 26" x 64"	1½"	UAS**	**	UARR-64-A
STAINLESS STEEL				
20½" x 26" x 63⅜"	2¼"	18" x 26"	24	OURR-1824-2-SR
20½" x 26" x 63⅜"	3"	18" x 26"	18	OURR-1818-3-SR
20½" x 26" x 63⅜"	5"	18" x 26"	11	OURR-1811-5-SR
23" x 26" x 64"	3"	12" x 20"	36*	OURR-2036-3-SR
23½" x 26" x 64⅜"	2½"	UAS**	**	UARR-64-SR***

* Two 12" x 20" trays per set of tray slides.

** 12 Universal Angle Slides come with UARR-64-A and UARR-64-52.

Each set holds two 12" x 20" pans, one 18" x 26" tray, plus one 15" x 20" tray or one 20" x 20" rack.

*** Stainless steel model UARR-64-SR supplied with standard extruded aluminum universal slides.



universal angle rack

Can Racks NSF

EG60.15A

Racks constructed of high strength extruded aluminum sections. All welded construction. Full size units feature open top. Half size units come with aluminum tops (suffix "A") or ½"-thick poly tops (suffix "AP"). Full size mobile units feature heavy duty 6" plate casters. Half size units feature 5" plate casters.

Accessories: casters with locking brakes, perimeter bumper, and vertical corner bumpers.

description	overall dimensions width x depth x height	sliding space	# of tiers high	can capacity		model #
				#10	#5	
full size, stationary	25" x 35" x 71"	7½"	9	162	216	FCR-10-9A
full size, mobile	25½" x 35" x 78¼"	7½"	9	162	216	OCR-10-9A
half size, mobile	25" x 35" x 35"	7½"	3	54	72	OCR-10-3A
half size, mobile	25" x 35" x 41"	7½"	4	72	96	OCR-10-4A
half size, mobile	25½" x 35⅝" x 35"	7½"	3	54	72	OCR-10-3AP
half size, mobile	25½" x 35⅝" x 41"	7½"	4	72	96	OCR-10-4AP



full size can rack

Panco®

Open Utility Racks

Platter Racks NSF

EG60.14

All racks are all welded aluminum construction.

Rack slides are designed to hold either 10½" or 12½" plastic platters. Features 5" casters.

Accessories: casters with locking brakes, vertical corner bumpers, and pan stops.

overall dimensions width x depth x height	sliding space	platter size	platter capacity	model #
13⅞" x 30" x 38¾"	6"	10½"	5	OPL-10-5A
13⅞" x 30" x 38¾"	5"	10½"	6	OPL-10-6A
13⅞" x 30" x 69¼"	6"	10½"	10	OPL-10-10A
13⅞" x 30" x 69¼"	5"	10½"	12	OPL-10-12A
15⅞" x 30" x 38¾"	6"	12½"	5	OPL-12-5A
15⅞" x 30" x 38¾"	5"	12½"	6	OPL-12-6A
15⅞" x 30" x 69¼"	6"	12½"	10	OPL-12-10A
15⅞" x 30" x 69¼"	5"	12½"	12	OPL-12-12A

WHITE DISPLAY PAN FOR PLATTER RACK

width x depth x height	model #
18" x 26" x 1⅞"	DP1826-W

PLATTERS FOR PLATTER RACKS

width x depth x height	model #
12½" x 24" x ¾"	PL1224
12½" x 30" x ¾"	PL1230
10½" x 30" x ¾"	PL1030



wire pan rack

Wire Pan Racks NSF

EG60.17

All aluminum square tubular construction. Front load and side load models offered. Features side-to-side cross bracing, nickel chrome-plated steel wire racks, and 5" casters.

Accessories: casters with locking brakes, rotary bumpers, perimeter bumper, vertical corner bumpers, and pan stop.

description	overall dimensions width x depth x height	sliding space	pan capacity	model #
front load	20½" x 28" x 69"	1½"	36	WPR-FL-36
side load	20" x 28½" x 69"	1½"	36	WPR-SL-36



donut rack

Donut Rack NSF

EG60.22

Heavy duty, all aluminum welded construction. Features include six cross braces, 1" square tubing, and 5" heavy duty casters.

Accessories: casters with locking brakes, rotary bumpers, perimeter bumper, vertical corner bumpers, and pan stop.

overall dimensions width x depth x height	sliding space	23" x 23" donut screen capacity	model #
25⅞" x 26" x 69¼"	3"	20	ODR-2320-3



oven rack

Oven Racks

EG60.16

Aluminum. Features heavy duty welded construction, 4" oven plate casters, 1" square tubing, and side-to-side cross bracing.

Accessories: oven plate casters and pan stop.

description	overall dimensions width x depth x height	sliding space	pan capacity	model #
front load	20½" x 26" x 69"	6"	10	ORF-1810-6
front load	20½" x 26" x 69"	5"	12	ORF-1812-5
front load	20½" x 26" x 69"	4"	15	ORF-1815-4
front load	20½" x 26" x 69"	3"	20	ORF-1820-3
front load	20½" x 26" x 69"	2"	30	ORF-1830-2
side load	19" x 28½" x 69"	6"	10	ORS-2610-6
side load	19" x 28½" x 69"	5"	12	ORS-2612-5
side load	19" x 28½" x 69"	4"	15	ORS-2615-4
side load	19" x 28½" x 69"	3"	20	ORS-2620-3
side load	19" x 28½" x 69"	2"	30	ORS-2630-2

OPTIONAL ACCESSORIES FOR OVEN RACKS

description	model #
track pin	consult factory

Open Lug Racks NSF

EG60.19

All welded aluminum construction. Features 5" heavy duty casters.

Accessories: casters with locking brakes, rotary bumpers, perimeter bumper, vertical corner bumpers, and pan stop.

overall dimensions width x depth x height	sliding space	lug capacity	model #
19½" x 26¼" x 71"	10⅞"	6	OLR-6A
19½" x 26¼" x 51"	10⅞"	4	OLR-4A
19" x 26" x 31¼"	10⅞"	2	OLR-2A
15¾" x 26" x 20⅝"	10⅞"	1	OLR-1A

NESTING LUG BIN

width x depth x height	model #
15½" x 26½" x 8"	NL1626



open lug rack

Open Bus Box Cart NSF

EG60.20

All welded aluminum construction. Features 5" heavy duty casters.

Accessories: casters with locking brakes, rotary bumpers, vertical corner bumpers, and pan stop.

overall dimensions width x depth x height	sliding space	box capacity	model #
18½" x 26" x 36"	10"	3	OBC-3A

BUS BOX TUBS FOR OPEN BUS BOX CART

Made of high-density polyethylene.

width x depth x height	model #
21¾" x 15¾" x 5"	BBT-5
21¾" x 15¾" x 7"	BBT-7



open bus box cart

Panco®

Open Utility Racks

Pizza Pan Racks NSF

EG60.18A

All aluminum construction. Adjustable and all-welded models available. Both models feature 5" casters. Holds round and square pans. Adjustable model features adjustable pan opening for 10" to 16" pans. Knock-down construction. All-welded model features solid aluminum top. **Accessories:** casters with locking brakes, rotary bumpers, perimeter bumper, vertical corner bumpers, and pan stop.

description	overall dimensions width x depth x height	sliding space	pan capacity	model #
adjustable	adj. x 13 $\frac{3}{8}$ " x 34 $\frac{3}{4}$ "	2"	13	OUR-PZA-12A
all-welded	22" x 20" x 33 $\frac{3}{4}$ "	2"	12	OUR-PZ-12A



adjustable pizza
pan rack

Pizza Dough Box Rack NSF

EG60.18B

Solid aluminum top. All welded aluminum construction. Features 5" casters. Holds pizza dough boxes.

Accessories: casters with locking brakes, rotary bumpers, perimeter bumper, vertical corner bumpers, and pan stop.

overall dimensions width x depth x height	sliding space	box capacity	model #
21" x 26 $\frac{3}{4}$ " x 35"	3 $\frac{3}{4}$ "	7	OUR-DB-7A



pizza dough box rack

PIZZA DOUGH BOX

Made of durable thermoplastic. Stackable design. 12 per carton.

description	width x depth x height	model #
pizza dough box	18" x 26" x 3"	A208506
cover	18" x 26"	A208513



aluminum banquet cart

Banquet Carts NSF

EG60.08

For transporting big loads for banquets, catering, and bussing. Available in aluminum (with all-welded aluminum construction), or stainless steel (with all-welded aluminum frame with stainless steel shelves). Handles and uprights with smooth radius. Features include two handles (one per end of unit), solid shelves with marine edge, perimeter bumper, and heavy duty 8" x 2" platform casters (two swivel, two rigid).

depth x height	weight	# of shelves	ALUMINUM CARTS model #	STAINLESS STEEL CARTS model #
29" x 66"	147	5	QM2962-5-A/D	QM2966-5-SR/D
29" x 66"	180	5	QM2975-5-A/D	QM2977-5-SR/D
29" x 66"	135	4	QM2962-4-A/D	QM2966-4-SR/D
29" x 66"	156	6	QM2962-6-A/D	QM2966-6-SR/D



glass rack dolly

Glass Rack Dolly NSF

EG60.21

Heavy duty welded, all-aluminum construction. Features 5" plate casters. Shipped assembled.

Accessories: casters with locking brakes.

overall dimensions width x depth x height	weight capacity	model #
20 $\frac{5}{8}$ " x 22 $\frac{5}{8}$ " x 9 $\frac{1}{4}$ "	1200 lbs.	GRD-2020-A
20 $\frac{5}{8}$ " x 22 $\frac{3}{8}$ " x 39"	1200 lbs.	GRDH-2020-A*

*#GRDH-2020-A comes with push handle.

Aluminum Dunnage Racks NSF

EG01.17

All aluminum construction. Features 1 $\frac{1}{4}$ " square tubing and plastic feet. Models with 12" height available at no extra cost. To order, replace "08" in model number with "12".

Example: WDR203612-A.

overall dimensions width x depth x height	weight capacity	number of legs	number of lats	model #
20" x 36" x 8"	1500 lbs.	4	4	WDR203608-A
20" x 48" x 8"	1800 lbs.	4	4	WDR204808-A
20" x 60" x 8"	2000 lbs.	4	4	WDR206008-A
24" x 36" x 8"	1500 lbs.	4	5	WDR243608-A
24" x 48" x 8"	1800 lbs.	4	5	WDR244808-A
24" x 60" x 8"	2000 lbs.	4	5	WDR246008-A



aluminum dunnage rack

Nesting Dunnage Racks NSF

EG01.17

All aluminum construction. these racks are stackable, saving space when not in use.



nesting dunnage rack

overall dimensions width x length x height	weight capacity	model #
18" x 24" x 12"	3000 lbs.	NDR182412-A
18" x 36" x 12"	3000 lbs.	NDR183612-A
18" x 48" x 12"	2500 lbs.	NDR184812-A
20" x 24" x 12"	3000 lbs.	NDR202412-A
20" x 36" x 12"	3000 lbs.	NDR203612-A
20" x 48" x 12"	2500 lbs.	NDR204812-A
24" x 24" x 12"	3000 lbs.	NDR242412-A
24" x 36" x 12"	3000 lbs.	NDR243612-A
24" x 48" x 12"	2500 lbs.	NDR244812-A



mobile platform cart

Mobile Platform Carts NSF

EG60.36

Ideal for transport and storage with the need to load and unload contents. Heavy duty aluminum construction. Weight capacity of up to 1,200 lbs. Push handle included.

overall dimensions width x depth x height	deck size width x depth	weight capacity	model #
20" x 37 $\frac{1}{4}$ " x 42"	20" x 36"	1200	1202
20" x 49 $\frac{1}{4}$ " x 42"	20" x 48"	1200	1203
20" x 61 $\frac{1}{4}$ " x 42"	20" x 60"	1200	1212

Panco®

LIFETIME Series



roll-in racks

LIFETIME Series Universal Roll-In Racks NSF

EG60.33

LIFETIME GUARANTEE against: Rust and corrosion, material defects and workmanship. Built especially for roll-in freezers, proofers, and refrigerators. All heavy duty type 6063-T5 alloy aluminum welded construction. Heavy duty non-marking swivel plate casters. These racks accommodate a variety of sheet pan sizes.

Accessories: Corner bumpers, caster locks, solid base*, perimeter bumpers*, pan stop*, vertical bumper.

* Factory-installation required.

overall dimensions width x depth x height	sliding space	----- pan/tray capacity -----				model #
		12" x 20" pan	18" x 26" pan	13" x 18" pan	14" x 18" pan	
21½" x 26" x 64"	5"	10	11	22	22	4337
21½" x 26" x 64"	3"	17	18	36	36	4338



stepped-angle racks

LIFETIME Series Stepped-Angle Racks NSF

EG60.34

LIFETIME GUARANTEE against: Rust and corrosion, material defects and workmanship.

Accepts popular sizes of roast and bake pans, steam table pans, service trays and more.

Constructed of heavy duty extruded primary type 6463-T5 aluminum alloy. Fully-welded frame features "D"-shaped tubing.

Accessories: Corner bumpers, caster locks, solid base, perimeter bumpers and pan stop.

PAN RACKS

overall dimensions width x depth x height	sliding space	number of slides	model #
26" x 26" x 73"	4½"	12	4635
25" x 26" x 73"	3"	18	4637

ROLL-IN RACKS

overall dimensions width x depth x height	sliding space	number of slides	model #
26" x 26" x 64"	4½"	12	4635
25" x 26" x 64"	3"	18	4637



bun pan racks

LIFETIME Series Bun Pan Racks NSF

EG60.31

LIFETIME GUARANTEE against: Rust and corrosion, material defects and workmanship.

Durable and long-lasting, withstands years of rough use. All heavy duty 6063-T5 alloy aluminum type construction. These racks accommodate 18" x 26" sheet pans.

Accessories: Caster upgrade, caster locks, corner bumpers, solid base*, perimeter bumpers*,

* Factory-installation required.

overall dimensions width x depth x height	sliding space	pan capacity	model #
21½" x 26" x 73"	2"	30	4330
21½" x 26" x 73"	3"	20	4331
21½" x 26" x 73"	5"	12	4333

LIFETIME Series Universal Pan Racks NSF

EG60.32

LIFETIME GUARANTEE against: Rust and corrosion, material defects and workmanship. These racks accommodate a variety of sheet pan sizes. All heavy duty 6063-T5 alloy aluminum type construction.

Accessories: Pan stops, rotary bumpers, perimeter bumper, casters with brakes and vertical corner bumper.

overall dimensions width x depth x height	sliding space	----- pan/tray capacity -----				model #
		12" x 20" pan	18" x 26" pan	13" x 18" pan	14" x 18" pan	
21½" x 26" x 73"	3"	19	20	40	40	4339
21½" x 26" x 73"	5"	11	12	24	24	4340



universal pan racks



enclosed pan racks

LIFETIME Series Enclosed Pan Racks NSF

EG60.35

LIFETIME GUARANTEE against: Rust and corrosion, material defects and workmanship. Very tough - built to withstand the wear and tear of truck and transport use. Accepts 18" x 26" full-size bun pans or 13" x 18" half-size bun pans. Constructed of heavy duty type 6063-T5 extruded aluminum alloy. Door is constructed of thick aluminum and comes with four stainless steel hinges.

Accessories: Caster locks, corner bumpers, perimeter bumpers, and open door latch.

overall dimensions width x depth x height	sliding space	18" x 26" pan capacity	type of 6" caster	model #
20⅞" x 27⅞" x 69"	1½"	38	polyolefin	1290PP*
20⅞" x 27⅞" x 69"	1½"	38	K-urethane	1290WDW
20⅞" x 27⅞" x 69"	1½"	38	polyolefin	1292

*#1290PP "Prison Package" includes: (4) aluminum welded hinges; (4) 6" casters; (2) padlock holes in door; extra interior bracing; and tamper-proof screws and bolts.

LIFETIME Series Dunnage Racks NSF

EG60.30

LIFETIME GUARANTEE against: Rust and corrosion, material defects and workmanship. Stronger and more durable than any stainless steel or polymer rack marketed. All heavy duty 6063-T5 alloy aluminum type construction. Feet are capped and welded. Weight capacity up to 5,000 lbs, depending on length of rack. Fully-welded frame consists of heavy gauge 2" square tubing for maximum strength.

overall dimensions width x depth x height	weight capacity	model #
20" x 36" x 12"	5000 lbs.	4004
20" x 48" x 12"	4000 lbs.	4005
20" x 60" x 12"	3400 lbs.	4006
24" x 36" x 12"	4000 lbs.	4008
24" x 48" x 12"	4000 lbs.	4009
24" x 60" x 12"	4000 lbs.	4010
30" x 48" x 12"	4000 lbs.	4027
36" x 48" x 12"	4000 lbs.	4065



dunnage racks

Panco®

Aluminum Sheet Pans

18 Gauge Aluminum Sheet Pans

EG60.23

Made from H-24 3003 aluminum alloy, the industry's best, proven to be harder and more durable. All aluminum pans feature a rust-resistant wire bead for rust-free durability and extended use. Packed 12 per box.

description	dimensions	SOLID	PERFORATED	GLAZED
		model #	model #	model #
half size	17 $\frac{3}{4}$ " x 12 $\frac{1}{8}$ "	SP1813-18	PP1813-18	n/a
full size	17 $\frac{3}{4}$ " x 25 $\frac{1}{8}$ "	SP1826-18	PP1826-18	SP1826-G



perforated pan

Heavy Duty 16 Gauge Sheet Pans

EG60.23

description	dimensions	model #
solid, full size	17 $\frac{3}{4}$ " x 25 $\frac{1}{8}$ "	SP1826-16

NSF Sheet Pan

EG60.23

All NSF pans are solid and 12 gauge construction, heavier than the standard aluminum sheet pans. Instead of a wire bead around the perimeter of the pan, the bead is open. Packed 12 per box.

description	dimensions	model #
solid, full size, NSF	17 $\frac{3}{4}$ " x 25 $\frac{1}{8}$ "	SP1826-N

Freight prepaid on 40 dozen or more pans. All other freight collect.



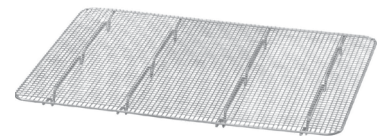
NSF pan

Drip Racks

EG60.23

Designed to fit inside half size and full size Panco® sheet pans. Chrome (packed 12 per box). Integral supports hold the mat approximately $\frac{5}{8}$ " off the working surface.

description	width x length x depth	chrome model #
half size rack	11 $\frac{1}{8}$ " x 16 $\frac{1}{8}$ " x $\frac{3}{4}$ "	DPRK1216C
full size rack	16 $\frac{3}{8}$ " x 24 $\frac{3}{4}$ " x 1"	DPRK1725C



drip rack

Pan Truck

EG60.21

Heavy duty, all aluminum construction. Features 1" square tubing, 5" casters and rear pan strap.

Accessories: casters with locking brakes.

overall dimensions width x depth x height	weight capacity	full size pan capacity	model #
21" x 27" x 33 $\frac{1}{2}$ "	1000 lbs.	75	PT-1826-A



pan truck

Bun Pan Dolly

EG60.21

Heavy duty welded, all-aluminum construction. Features 5" plate casters. Shipped assembled.

Accessories: casters with locking brakes.

overall dimensions width x depth x height	weight capacity	full size pan capacity	model #
18 $\frac{1}{8}$ " x 27" x 7"	800 lbs.	75	BPD-1826-A

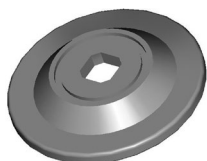


bun pan dolly

To order accessories, add a slash "/" onto the end of unit model number. Then add the suffix indicating corresponding option or accessory model number(s). For example, model number UAR-64-A/ADG indicates a universal angle rack with the following accessories: locking brakes ("A"), perimeter bumper ("D"), and aluminum pan stop ("G").



caster with
locking brake



rotary bumper

Casters

Sold as single packed casters.

description	accessory model #
4" hi-temp oven plate caster with built-in grease fitting	606587
4" hi-temp oven plate caster with brake	606588
4" plate caster with built-in grease fitting	606589
4" plate caster with brake	606590
5" pan truck caster	606593
5" stem caster	606594
5" stem caster with brake	606595
5" plate caster	606598
5" plate caster w/brake	606599

Casters with Locking Brakes

For all units except Oven Racks.

description	accessory model #
set of two, 4" or 5"-diameter	A
set of four, 4" or 5"-diameter	B

Rotary Bumpers

For use with stem casters.

description	accessory model #
set of four, 5"-diameter	C

Perimeter Bumper

For all units except Oven Racks, Multiple Purpose Rack, Roll-In Refrigerator Racks, and Vertical Storage Oval Tray Racks.

Factory welded assembly is required on aluminum knocked-down units specified with perimeter bumpers.

description	accessory model #
full perimeter bumper	D

Pan Stops

Prevents pans and/or trays from sliding out of unit.

description	accessory model #
aluminum	G
stainless steel	H

Factory Assembly

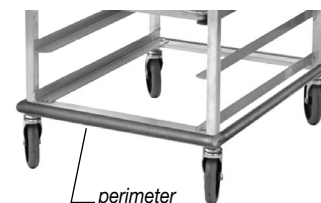
For aluminum units that would otherwise ship knocked down.

model #
L

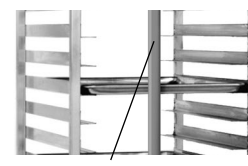
Vertical Corner Bumpers

For all units except working height racks.

description	accessory model #
set of four, 12"	F



perimeter bumper

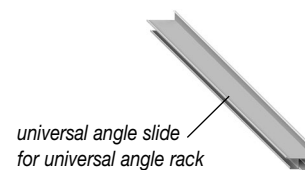


pan stop

Extra Universal Angle Slide

Per pair. Accommodates a variety of different size trays and pans.

description	accessory model #
for universal angle rack	606570



universal angle slide
for universal angle rack



Panco® Transport Systems

A simple solution to a frustrating situation... "How can we get all this from here to there?" Panco® Transport Racks provide the most efficient way to handle the many items required in the preparation, serving and storage of your products.



Panco® Transport Racks succeed in pairing efficiency with durability. Developed in conjunction with the needs of the customer, the following features make Panco® mobile open utility racks the choice of the foodservice industry.

- Designed with the end user in mind to endure the test of time. All Panco® racks are constructed of stainless steel or high-strength extruded aluminum sections.
- Roll, glide and maneuver easily with non-marking NSF® approved swivel casters.
- Rack slides are designed to fit most popular tray sizes and are configured to accommodate a variety of products.
- Available in several widths and heights, Panco® provides the perfect size open transport rack to fit your needs.
- While all transport units can also be used as storage areas, there are workstation and refrigerator roll-in models as well.

The Eagle Advantage™ begins right here in our state of the art manufacturing facility - with 14 acres under one roof - where the most comprehensive broadline product offering in the industry takes shape. This all-inclusive design and production capability offers distinct advantages to our customers. Streamlined ordering and shipping substantially reduce freight, receiving, installation and administrative costs.

Supporting it all is a framework of highly responsive customer service representatives, the most innovative, versatile and durable equipment available on the market today, a fleet of company-owned trucks, plus amply stocked distribution centers in strategic locations nationwide - which guarantees product availability and delivery.

Together, it adds up to product excellence enhanced by measurable cost savings and value.

We call it **The Eagle Advantage™** and you can profit from it.



Profit from the Eagle Advantage®

Corporate Headquarters:

100 Industrial Boulevard • Clayton, DE
19938-8903 USA

Phone: (302) 653-3000 • 800-441-8440

www.eaglegrp.com