

Reinforcement Plates for Hot Food Table Tray Slide and/or Plate Shelf

INSTALLATION INSTRUCTIONS

CAUTION

INSPECT CONTENTS IMMEDIATELY AND FILE CLAIM WITH DELIVERING CARRIER FOR ANY DAMAGE.
SAVE YOUR BOX AND ALL PACKING MATERIALS.
 YOU ARE RESPONSIBLE FOR DAMAGE TO YOUR UNIT IF RETURNED IMPROPERLY PACKED.

Thank you for your purchase. Before assembly, read this instruction sheet carefully.
 After reading, be sure to store this instruction in a safe place, should it be needed for future reference.

Parts List



<i>item #</i>	<i>part #</i>	<i>description</i>	<i>qty</i>
1	376426	reinforcement plate	4
2	301773	screw	8
3	300919	pop rivet	16

Step 1 - Locate corner inserts.

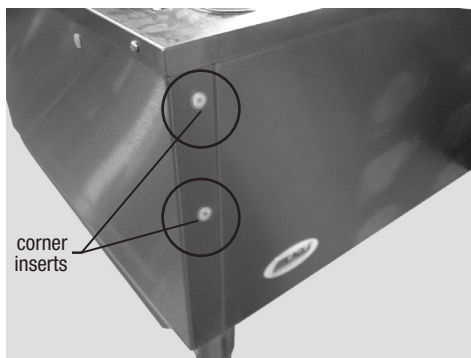


figure 1

Step 2 - Drill out existing aluminum inserts, using 1/4" drill bit.



figure 2

(continued on back page)

Reinforcement Plates for Hot Food Table Tray Slide and/or Plate Shelf

INSTALLATION INSTRUCTIONS

Step 3 - After removing the existing inserts, drill hexagonal hole to a round hole using a 3/8"-diameter drill bit.

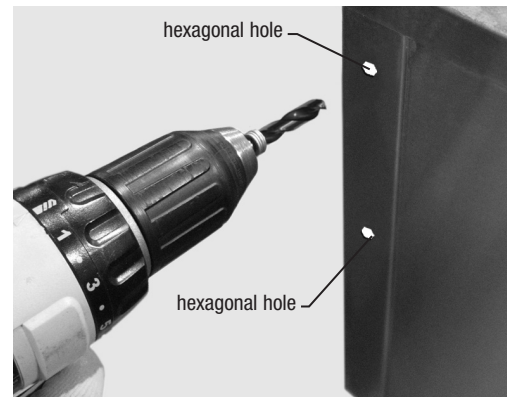


figure 3

Step 4 - Install reinforcement plate into the rounded holes.

- The inserts should fit inside the 3/8"-diameter holes as shown in *figure 4*.
- Using the reinforcement plate as a template, drill (4) 1/8"-diameter holes.
- Install 1/8" rivets into the (4) holes.

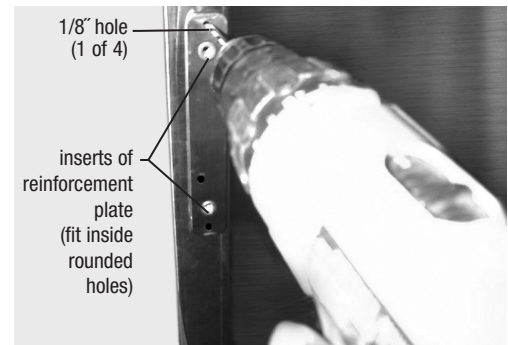


figure 4



When completed, it should look like picture above.

Repeat Steps 1 through 4 on remaining corners.

(End)