

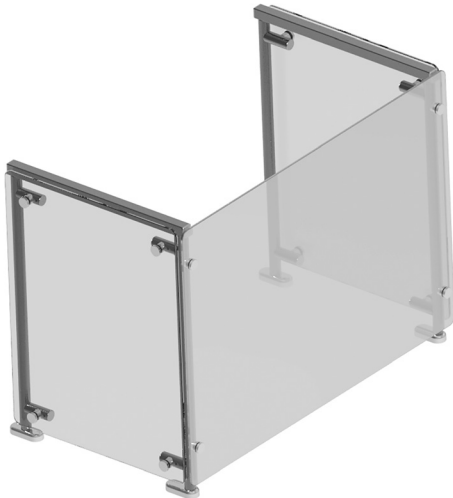


Profit from the Eagle Advantage®

Specification Sheet

Short Form Specifications

Eagle Spec-GUARD™ Cafeteria Carving Station Food Guards, model _____. Carving station food shield designed to meet NSF requirements. Carving station allows the customer to view product as it is being prepared, plated, carved, or displayed.



#DCS2-CA-NT

Item No.:	_____
Project No.:	_____
S.I.S. No.:	_____

Spec-GUARD™ Cafeteria Carving Station Food Guards

MODELS:

- DCS2-CA-NT
- DCS3-CA-NT
- DCS4-CA-NT
- DCS5-CA-NT
- DCS6-CA-NT

Design and Construction Features

- Fixed glass panels mounted on stainless steel standoffs
- 1" (25mm) stainless steel tubular frame
- Die-cast aluminum mounting plates with stainless steel covers
- 3/4" (19mm) radius on glass panels
- 3/8" (10mm)-thick top glass
- 1/4" (6mm)-thick front and side glass
- End glass included

Options / Accessories

- Heat lamps
- Lights
- 3 5/8" round mounting plate
- 3" Oval mounting plate
- 3" Oval offset mounting plate
- 2" x 8" rectangular mounting plate
- 3-point anchor
- Custom lengths available

⚠ WARNING:

This product can expose you to chemicals including Chromium, which is known to the state of California to cause cancer and birth defects or other reproductive harm. For more information, go to www.P65Warnings.ca.gov.

EAGLE GROUP

100 Industrial Boulevard, Clayton, DE 19938-8903 USA
 Phone: 302-653-3000 • 800-441-8440 • Fax: 302-653-2065
www.eaglegrp.com
www.eaglemhc.com

For custom configuration or fabrication needs, contact our SpecFAB® Division.
 Phone: 302-653-3000 • Fax: 302-653-2065 • e-mail: quotes@eaglegrp.com



EG33.27D Rev. 02/25

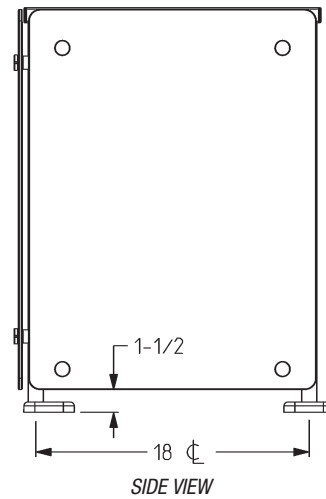
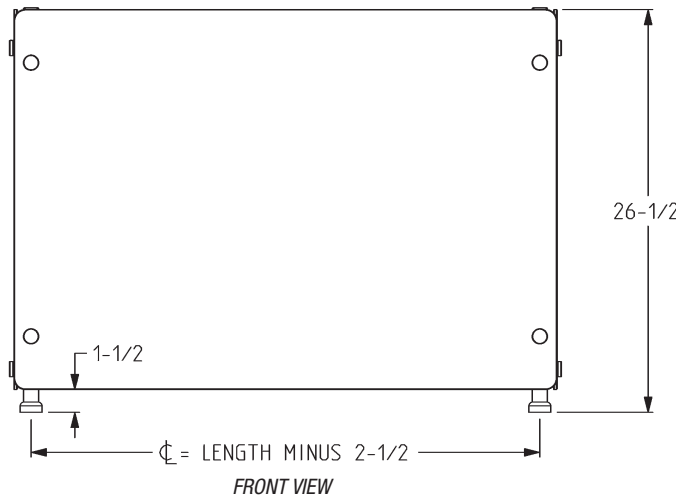
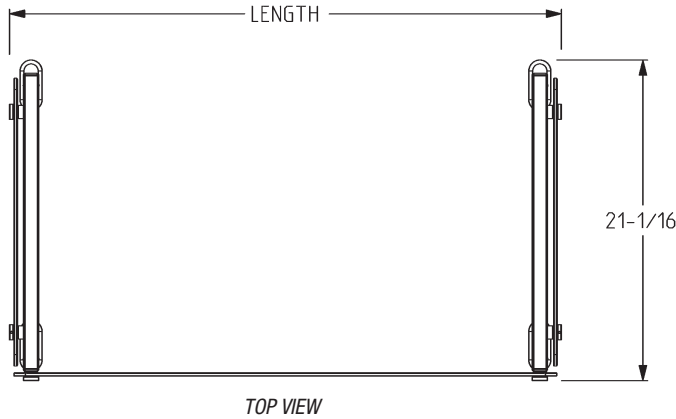
Spec sheets available for viewing, printing or downloading from our online literature library at our websites

Eagle Foodservice Equipment, Eagle MHC, and SpecFAB® are divisions of Eagle Group. ©2025 by the Eagle Group



Item No.: _____
 Project No.: _____
 S.I.S. No.: _____

Spec-GUARD™ Cafeteria Carving Station Food Guards



fits Series	length		weight		model #
	in.	mm	lbs.	kg	
DCS2	36"	914	287	130.2	DCS2-CA-NT
DCS3	50"	1270	310	140.6	DCS3-CA-NT
DCS4	64"	1626	339	153.8	DCS4-CA-NT
DCS5	78"	1981	362	164.2	DCS5-CA-NT
DCS6	96"	2438	391	177.4	DCS6-CA-NT

EAGLE GROUP
 100 Industrial Boulevard, Clayton, DE 19938-8903 USA
 Phone: 302-653-3000 or 800-441-8440 • Fax: 302-653-2065
 www.eaglegrp.com • www.eaglehmc.com

Printed in U.S.A.
 ©2025 by Eagle Group

Rev. 02/25

Spec sheets available for viewing, printing or downloading from our online literature library at our websites

Although every attempt has been made to ensure the accuracy of the information provided, we cannot be held responsible for typographical or printing errors. Information and specifications are subject to change without notice. Please confirm at time of order.