



Profit from the Eagle Advantage®

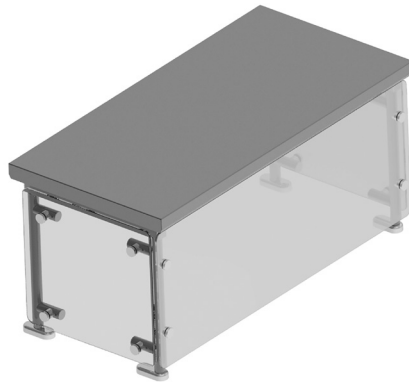
# Specification Sheet

## Short Form Specifications

Eagle Spec-GUARD™ Cafeteria Food Guards with Glass or Solid Top, model \_\_\_\_\_. Cafeteria food shield designed to meet NSF requirements. Front allows maximum customer view of the food product while maximizing protection. Rear allows full access by the kitchen staff for replenishing product.



#DCS2-CA-GT



#DCS2-CA-MT

|              |       |
|--------------|-------|
| Item No.:    | _____ |
| Project No.: | _____ |
| S.I.S. No.:  | _____ |

## Spec-GUARD™ Cafeteria Food Guards with Glass or Solid Top

### MODELS:

- |                                     |                                     |
|-------------------------------------|-------------------------------------|
| <input type="checkbox"/> DCS2-CA-GT | <input type="checkbox"/> DCS2-CA-MT |
| <input type="checkbox"/> DCS3-CA-GT | <input type="checkbox"/> DCS3-CA-MT |
| <input type="checkbox"/> DCS4-CA-GT | <input type="checkbox"/> DCS4-CA-MT |
| <input type="checkbox"/> DCS5-CA-GT | <input type="checkbox"/> DCS5-CA-MT |
| <input type="checkbox"/> DCS6-CA-GT | <input type="checkbox"/> DCS6-CA-MT |

### Design and Construction Features

- Fixed glass panels mounted on stainless steel standoffs
- 1" (25mm) stainless steel tubular frame
- Die-cast aluminum mounting plates with stainless steel covers
- 3/4" (19mm) radius on glass panels
- 3/8" (10mm)-thick top glass
- 1/4" (6mm)-thick front and side glass
- End glass included

### Options / Accessories

- Heat lamps
- Lights
- 3 5/8" round mounting plate
- 3" Oval mounting plate
- 3" Oval offset mounting plate
- 2" x 8" rectangular mounting plate
- 3-point anchor
- Custom lengths available

### ⚠ WARNING:

This product can expose you to chemicals including Chromium, which is known to the state of California to cause cancer and birth defects or other reproductive harm. For more information, go to [www.P65Warnings.ca.gov](http://www.P65Warnings.ca.gov).

### EAGLE GROUP

100 Industrial Boulevard, Clayton, DE 19938-8903 USA  
Phone: 302-653-3000 • 800-441-8440 • Fax: 302-653-2065  
[www.eaglegrp.com](http://www.eaglegrp.com)  
[www.eaglemhc.com](http://www.eaglemhc.com)

For custom configuration or fabrication needs, contact our SpecFAB® Division.  
Phone: 302-653-3000 • Fax: 302-653-2065 • e-mail: [quotes@eaglegrp.com](mailto:quotes@eaglegrp.com)



EG33.27C Rev. 02/25

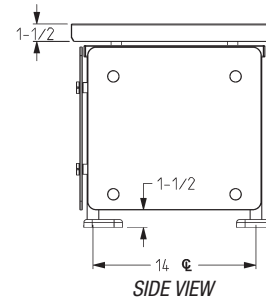
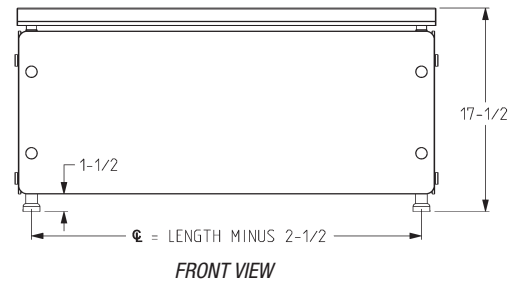
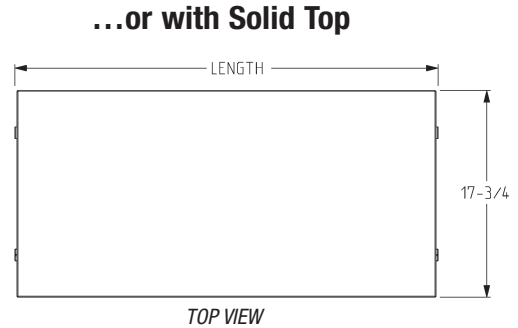
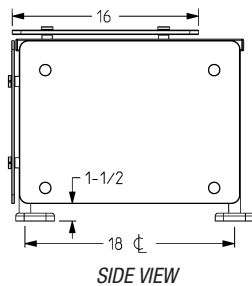
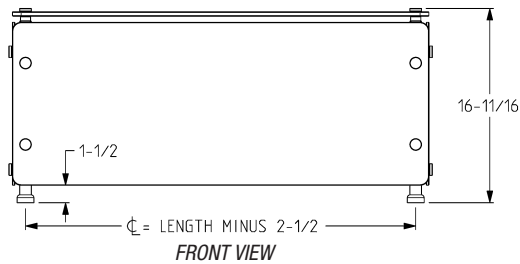
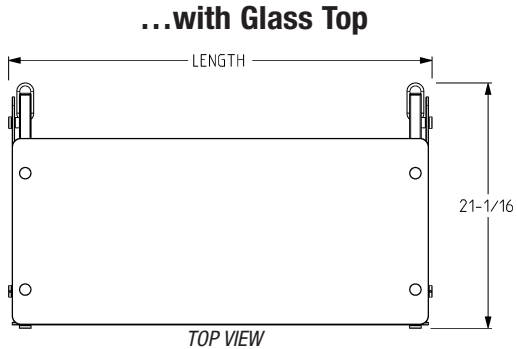
Spec sheets available for viewing, printing or downloading from our online literature library at our websites

Eagle Foodservice Equipment, Eagle MHC, and SpecFAB® are divisions of Eagle Group. ©2025 by the Eagle Group



Item No.: \_\_\_\_\_  
 Project No.: \_\_\_\_\_  
 S.I.S. No.: \_\_\_\_\_

## Spec-GUARD™ Cafeteria Food Guards with Glass or Solid Top



| fits<br>Series | length |      | weight |       | model #    | weight |       | model #    |
|----------------|--------|------|--------|-------|------------|--------|-------|------------|
|                | in.    | mm   | lbs.   | kg    |            | lbs.   | kg    |            |
| DCS2           | 36"    | 914  | 217    | 98.4  | DCS2-CA-GT | 226    | 102.5 | DCS2-CA-MT |
| DCS3           | 50"    | 1270 | 243    | 110.2 | DCS3-CA-GT | 255    | 115.7 | DCS3-CA-MT |
| DCS4           | 64"    | 1626 | 276    | 125.2 | DCS4-CA-GT | 292    | 132.5 | DCS4-CA-MT |
| DCS5           | 78"    | 1981 | 308    | 139.7 | DCS5-CA-GT | 321    | 145.6 | DCS5-CA-MT |
| DCS6           | 96"    | 2438 | 342    | 155.1 | DCS6-CA-GT | 355    | 161.0 | DCS6-CA-MT |

**EAGLE GROUP**  
 100 Industrial Boulevard, Clayton, DE 19938-8903 USA  
 Phone: 302-653-3000 or 800-441-8440 • Fax: 302-653-2065  
 www.eaglegrp.com • www.eaglehmc.com

Printed in U.S.A.  
 ©2025 by Eagle Group

Rev. 02/25

Spec sheets available for viewing, printing or downloading from our online literature library at our websites

Although every attempt has been made to ensure the accuracy of the information provided, we cannot be held responsible for typographical or printing errors. Information and specifications are subject to change without notice. Please confirm at time of order.