



Profit from the Eagle Advantage®

Specification Sheet

Short Form Specifications

Eagle Group SPEC-BAR® Portable Bar with Double Ice Bins, model # _____ . Welded 1-1/2" type 300 stainless steel square tubular base construction. 80" length, 33" wide, 48" high with 34" work height. Fully mobile - standard 4" poly tread casters with brake. Double ice bins measure 15" x 21" x 8" with 1-1/2" drain. Single 10" x 12" dump sink with perforated insert and 1-1/2" drain. Double speedrail measures 72". Storage for four (4) 20" x 20" x 4" glass racks. Ice bins and dump sink plumbed independently.



#SBPB-DBL-6



available with lift-up countertops

Options / Accessories

- Solid surface bar top
- Laminate or powder coated panels

EAGLE GROUP

100 Industrial Boulevard, Clayton, DE 19938-8903 USA
 Phone: 302-653-3000 • 800-441-8440 • Fax: 302-653-2065
www.eaglegrp.com
www.eaglehmc.com

For custom configuration or fabrication needs, contact our **SpecFAB® Division**.
 Phone: 302-653-3000 • Fax: 302-653-2065 • e-mail: quotes@eaglegrp.com

| | |
|--------------|-------|
| Item No.: | _____ |
| Project No.: | _____ |
| S.I.S. No.: | _____ |

SPEC-BAR® Portable Bars with Double Ice Bins

MODELS:

- SBPB-DBL-6
- SBPB-DBL-6-XCT

Design and Constructions Features

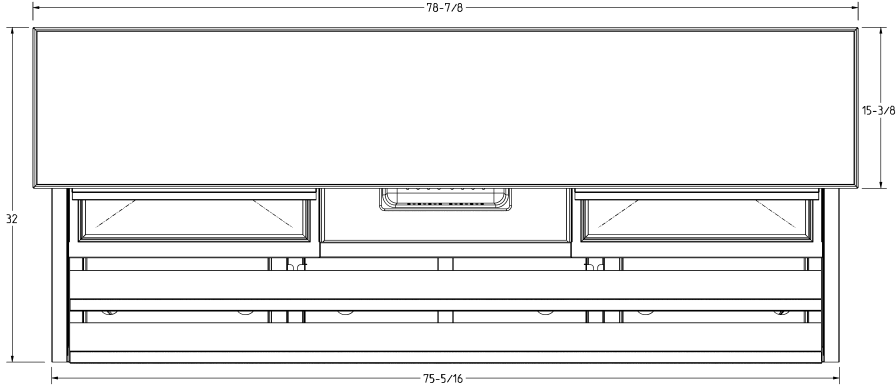
- Welded 1½" (38mm) type 300 stainless steel square tubular base construction
- Stainless countertop with marine edge
- 4" (102mm) casters with brake
- Double Ice bins measure 15" x 21" x 8" (381 x 533 x 203mm) with 1-1/2" (38mm) drain.
- 10" x 12" (254 x 305mm) dump sink with perforated insert.
- Full length double speed rail
- Storage for four 20" x 20" x 4" (508 x 508 x 102mm) glass racks
- Available with or without lift-up stainless steel countertops.



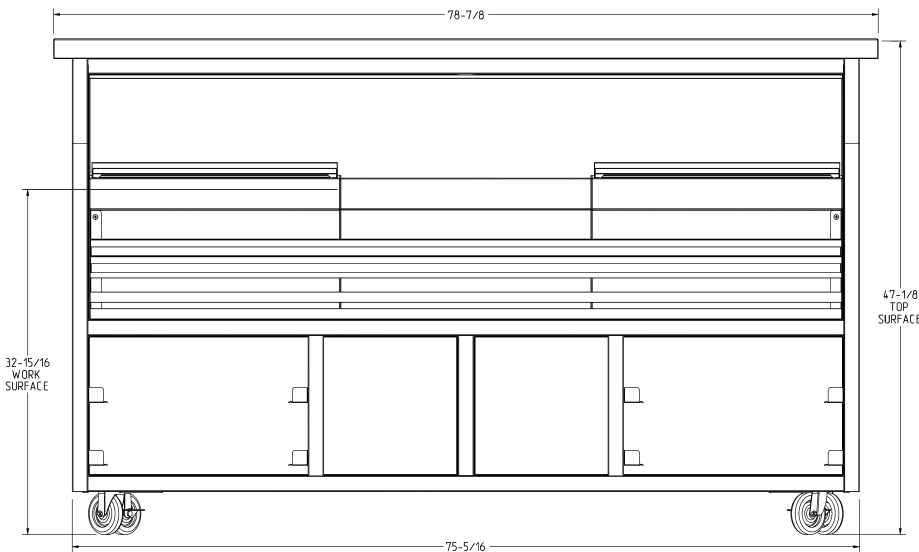


Item No.: _____
 Project No.: _____
 S.I.S. No.: _____

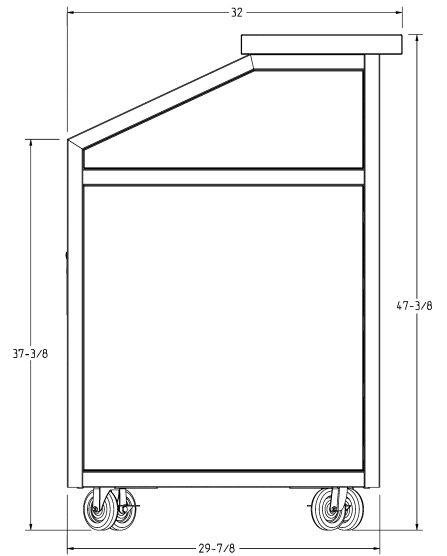
SPEC-BAR® Portable Bars with Double Ice Bins



TOP VIEW



FRONT VIEW (WORKER'S SIDE)



SIDE VIEW

| O.A. size * | | working height | | Unit without Lift-Up Countertops | Unit with * Lift-Up Countertops |
|-------------|-----------|----------------|--------|-------------------------------------|------------------------------------|
| length | width | height | height | model # | model # |
| in. | mm | in. | mm | | |
| 80" | 32" x 48" | 34" | 864 | SBPB-DBL-6 | SBPB-DBL-6-XCT |

* Overall ("O.A.") length of model #SBPB-DBL-6-XCT is with lift-up countertops folded down. With both lift-up countertops extended, O.A. length is 130" (3302mm).

EAGLE GROUP
 100 Industrial Boulevard, Clayton, DE 19938-8903 USA
 Phone: 302-653-3000 or 800-441-8440 • Fax: 302-653-2065
 www.eaglegrp.com • www.eaglehmc.com

Printed in U.S.A.
 ©2024 by Eagle Group

Rev. 10/24

Spec sheets available for viewing, printing or downloading from our online literature library at our websites

Although every attempt has been made to ensure the accuracy of the information provided, we cannot be held responsible for typographical or printing errors. Information and specifications are subject to change without notice. Please confirm at time of order.