

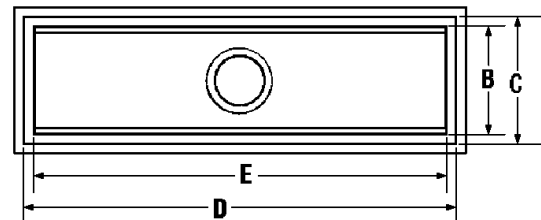
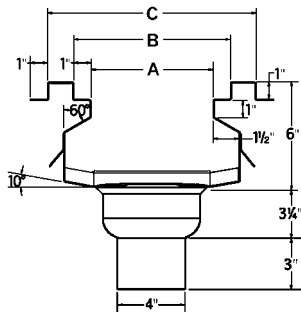


Floor Troughs & Drains

EAGLETM
Foodservice Equipment Division
Profit from the Eagle Advantage[®]

Anti-splash Floor Troughs

- A wide variety of uses: drain off at ice machines, cooking lines, indirect drainage at walk-in boxes, or floor kettles.
- Patented “anti-splash” design (patent #D519,618 S) assures complete drainage while preventing splash back onto floor.
- Built-in pitch towards drain insures complete drainage.
- Heavy duty 14 gauge type 304 stainless steel all-welded construction.
- Floor troughs come with subway-style stainless steel or fiberglass grating.
- Stainless steel drain accommodates up to a 4” diameter pipe, and features a removable perforated stainless steel basket.
- Custom lengths available. Consult factory for details.
- Troughs with Wide T-Bar Fiberglass Grating available. Comes in gray only. ADA-approved for use with the physically handicapped! Wide T-bar width provides a more solid walking area, and prevents objects from fall through. Resistant to corrosion, skid, fire, chipping and cracking.



Note To Installers: Add 1/4” to floor dimension “E”

(see charts below for dimensions A through E)

12”-wide Troughs

dimension A: 7”
dimension B: 9”
dimension C: 12”

dimension D	dimension E	WITH YELLOW * FIBERGLASS GRATING model #	WITH ADA-APPROVED FIBERGLASS GRATING model #	WITH STAINLESS STEEL GRATING model #	WITH YELLOW * FIBERGLASS GRATING model #	WITH ADA-APPROVED FIBERGLASS GRATING model #	WITH STAINLESS STEEL GRATING model #
18"	15"	ASFT-1218-FG	ASFT-1218-FG-ADA	ASFT-1218-SG	n/a	n/a	n/a
24"	21"	ASFT-1224-FG	ASFT-1224-FG-ADA	ASFT-1224-SG	ASFT-1524-FG	ASFT-1524-FG-ADA	ASFT-1524-SG
30"	27"	ASFT-1230-FG	ASFT-1230-FG-ADA	ASFT-1230-SG	ASFT-1530-FG	ASFT-1530-FG-ADA	ASFT-1530-SG
36"	33"	ASFT-1236-FG	ASFT-1236-FG-ADA	ASFT-1236-SG	ASFT-1536-FG	ASFT-1536-FG-ADA	ASFT-1536-SG
48"	45"	ASFT-1248-FG	ASFT-1248-FG-ADA	ASFT-1248-SG	ASFT-1548-FG	ASFT-1548-FG-ADA	ASFT-1548-SG
60"	57"	ASFT-1260-FG	ASFT-1260-FG-ADA	ASFT-1260-SG	ASFT-1560-FG	ASFT-1560-FG-ADA	ASFT-1560-SG
72"	69"	ASFT-1272-FG	ASFT-1272-FG-ADA	ASFT-1272-SG	ASFT-1572-FG	ASFT-1572-FG-ADA	ASFT-1572-SG
84"	81"	ASFT-1284-FG	ASFT-1284-FG-ADA	ASFT-1284-SG	ASFT-1584-FG	ASFT-1584-FG-ADA	ASFT-1584-SG
96"	93"	ASFT-1296-FG	ASFT-1296-FG-ADA	ASFT-1296-SG	ASFT-1596-FG	ASFT-1596-FG-ADA	ASFT-1596-SG
120"	117"	ASFT-12120-FG	ASFT-12120-FG-ADA	ASFT-12120-SG	ASFT-15120-FG	ASFT-15120-FG-ADA	ASFT-15120-SG

* To order gray fiberglass grating in place of yellow, add suffix “G” to model number. Example: ASFT-1230-FGG

15”-wide Troughs

dimension A: 10”
dimension B: 12”
dimension C: 15”

18”-wide Troughs

dimension A: 13”
dimension B: 15”
dimension C: 18”

dimension D	dimension E	WITH YELLOW * FIBERGLASS GRATING model #	WITH ADA-APPROVED FIBERGLASS GRATING model #	WITH STAINLESS STEEL GRATING model #	WITH YELLOW * FIBERGLASS GRATING model #	WITH ADA-APPROVED FIBERGLASS GRATING model #	WITH STAINLESS STEEL GRATING model #
24"	21"	ASFT-1824-FG	ASFT-1824-FG-ADA	ASFT-1824-SG	ASFT-2424-FG	ASFT-2424-FG-ADA	ASFT-2424-SG
30"	27"	ASFT-1830-FG	ASFT-1830-FG-ADA	ASFT-1830-SG	ASFT-2430-FG	ASFT-2430-FG-ADA	ASFT-2430-SG
36"	33"	ASFT-1836-FG	ASFT-1836-FG-ADA	ASFT-1836-SG	ASFT-2436-FG	ASFT-2436-FG-ADA	ASFT-2436-SG
48"	45"	ASFT-1848-FG	ASFT-1848-FG-ADA	ASFT-1848-SG	ASFT-2448-FG	ASFT-2448-FG-ADA	ASFT-2448-SG
60"	57"	ASFT-1860-FG	ASFT-1860-FG-ADA	ASFT-1860-SG	ASFT-2460-FG	ASFT-2460-FG-ADA	ASFT-2460-SG
72"	69"	ASFT-1872-FG	ASFT-1872-FG-ADA	ASFT-1872-SG	ASFT-2472-FG	ASFT-2472-FG-ADA	ASFT-2472-SG
84"	81"	ASFT-1884-FG	ASFT-1884-FG-ADA	ASFT-1884-SG	ASFT-2484-FG	ASFT-2484-FG-ADA	ASFT-2484-SG
96"	93"	ASFT-1896-FG	ASFT-1896-FG-ADA	ASFT-1896-SG	ASFT-2496-FG	ASFT-2496-FG-ADA	ASFT-2496-SG
120"	117"	ASFT-18120-FG	ASFT-18120-FG-ADA	ASFT-18120-SG	ASFT-24120-FG	ASFT-24120-FG-ADA	ASFT-24120-SG

* To order gray fiberglass grating in place of yellow, add suffix “G” to model number. Example: ASFT-1830-FGG

24”-wide Troughs

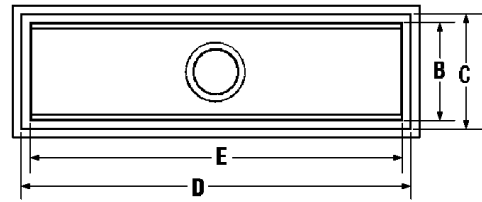
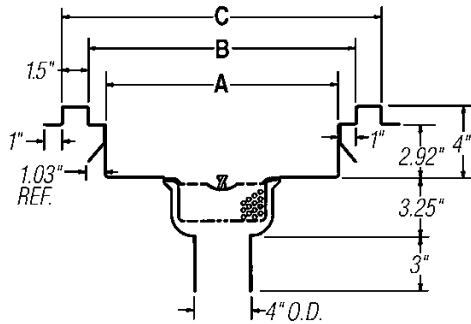
dimension A: 19”
dimension B: 21”
dimension C: 24”

Floor Troughs

- A wide variety of uses: drain off at ice machines, cooking lines, indirect drainage at walk-in boxes, or floor kettles.
- Heavy duty 14 gauge type 304 stainless steel all-welded construction.
- Designed for assurance of complete drainage.
- Stainless steel drain accommodates up to a 4" diameter pipe, and features a removable perforated stainless steel basket.
- Floor drains and floor troughs come with subway-style stainless steel or fiberglass grating.
- Custom lengths available. Consult factory for details.
- Troughs with Wide T-Bar Fiberglass Grating available. Comes in gray only. ADA-approved for use with the physically handicapped! Wide T-bar width provides a more solid walking area, and prevents objects from fall through. Resistant to corrosion, skid, fire, chipping and cracking.



model #FT-1248-SG floor trough with stainless steel grating



Note To Installers: Add 1/4" to floor dimension "E"

(see charts below for dimensions A through E)

12"-wide Troughs

dimension A: 7"
dimension B: 9"
dimension C: 12"

dimension D	dimension E	12"-wide Troughs			15"-wide Troughs		
		WITH YELLOW * FIBERGLASS GRATING model #	WITH ADA-APPROVED FIBERGLASS GRATING model #	WITH STAINLESS STEEL GRATING model #	WITH YELLOW * FIBERGLASS GRATING model #	WITH ADA-APPROVED FIBERGLASS GRATING model #	WITH STAINLESS STEEL GRATING model #
18"	15"	FT-1218-FG	FT-1218-FG-ADA	FT-1218-SG	n/a	n/a	n/a
24"	21"	FT-1224-FG	FT-1224-FG-ADA	FT-1224-SG	FT-1524-FG	FT-1524-FG-ADA	FT-1524-SG
30"	27"	FT-1230-FG	FT-1230-FG-ADA	FT-1230-SG	FT-1530-FG	FT-1530-FG-ADA	FT-1530-SG
36"	33"	FT-1236-FG	FT-1236-FG-ADA	FT-1236-SG	FT-1536-FG	FT-1536-FG-ADA	FT-1536-SG
48"	45"	FT-1248-FG	FT-1248-FG-ADA	FT-1248-SG	FT-1548-FG	FT-1548-FG-ADA	FT-1548-SG
60"	57"	FT-1260-FG	FT-1260-FG-ADA	FT-1260-SG	FT-1560-FG	FT-1560-FG-ADA	FT-1560-SG
72"	69"	FT-1272-FG	FT-1272-FG-ADA	FT-1272-SG	FT-1572-FG	FT-1572-FG-ADA	FT-1572-SG
84"	81"	FT-1284-FG	FT-1284-FG-ADA	FT-1284-SG	FT-1584-FG	FT-1584-FG-ADA	FT-1584-SG
96"	93"	FT-1296-FG	FT-1296-FG-ADA	FT-1296-SG	FT-1596-FG	FT-1596-FG-ADA	FT-1596-SG
120"	117"	FT-12120-FG	FT-12120-FG-ADA	FT-12120-SG	FT-15120-FG	FT-15120-FG-ADA	FT-15120-SG

* To order gray fiberglass grating in place of yellow, add suffix "G" to model number. Example: FT-1536-FGG

18"-wide Troughs

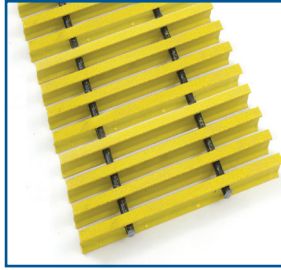
dimension A: 13"
dimension B: 15"
dimension C: 18"

dimension D	dimension E	18"-wide Troughs			24"-wide Troughs		
		WITH YELLOW * FIBERGLASS GRATING model #	WITH ADA-APPROVED FIBERGLASS GRATING model #	WITH STAINLESS STEEL GRATING model #	WITH YELLOW * FIBERGLASS GRATING model #	WITH ADA-APPROVED FIBERGLASS GRATING model #	WITH STAINLESS STEEL GRATING model #
24"	21"	FT-1824-FG	FT-1824-FG-ADA	FT-1824-SG	FT-2424-FG	FT-2424-FG-ADA	FT-2424-SG
30"	27"	FT-1830-FG	FT-1830-FG-ADA	FT-1830-SG	FT-2430-FG	FT-2430-FG-ADA	FT-2430-SG
36"	33"	FT-1836-FG	FT-1836-FG-ADA	FT-1836-SG	FT-2436-FG	FT-2436-FG-ADA	FT-2436-SG
48"	45"	FT-1848-FG	FT-1848-FG-ADA	FT-1848-SG	FT-2448-FG	FT-2448-FG-ADA	FT-2448-SG
60"	57"	FT-1860-FG	FT-1860-FG-ADA	FT-1860-SG	FT-2460-FG	FT-2460-FG-ADA	FT-2460-SG
72"	69"	FT-1872-FG	FT-1872-FG-ADA	FT-1872-SG	FT-2472-FG	FT-2472-FG-ADA	FT-2472-SG
84"	81"	FT-1884-FG	FT-1884-FG-ADA	FT-1884-SG	FT-2484-FG	FT-2484-FG-ADA	FT-2484-SG
96"	93"	FT-1896-FG	FT-1896-FG-ADA	FT-1896-SG	FT-2496-FG	FT-2496-FG-ADA	FT-2496-SG
120"	117"	FT-18120-FG	FT-18120-FG-ADA	FT-18120-SG	FT-24120-FG	FT-24120-FG-ADA	FT-24120-SG

* To order gray fiberglass grating in place of yellow, add suffix "G" to model number. Example: FT-1848-FGG

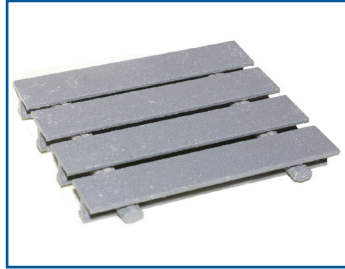
Replacement Subway-Style Grating

Fiberglass Grating



- 1" high yellow or gray polyester material with a non slip grit on top surface.
- Tapered "I" beam construction for ease of cleaning and drainage.
- Sizes available fit floor drains and troughs ranging from 12" to 24" wide.
- Temperature rating of 250°F.

Wide T-Bar Fiberglass Grating —ADA-approved*!



- Solid walking surface.
- One-third the weight of steel.
- Skid resistant, fire retardant.
- High impact strength.
- Low maintenance.
- Low thermal conductivity.
- One-directional load capacity.
- Resistant to corrosion, chipping and cracking.
- Temperature rating of 250°F.
- Gray color.

* Wide T-bar fiberglass grating conforms to ADA guidelines when installed in compliance with guidelines.

Stainless Steel Grating



- Type 304 stainless steel construction.
- Constructed of 3/16" x 1" vertically positioned bars, spaced 1" apart to allow ease of drainage. 1/16" clearance between bars prevents casters on mobile equipment from wedging in grate.
- Two 5/16" rods, set 2 1/4" in from each edge, are welded to the bars to eliminate swaying. Grates 12" and 15" wide feature three rods, grates 21" wide feature five rods.
- Available in widths up to 24".

Floor Drains

Built-in pitch towards drain ensures complete drainage. Perforated waste cup can be inverted to double as a bee hive strainer. Comes with yellow fiberglass or subway-style stainless steel grating.



floor drain shown without grating

description	W x L in.	model #
with yellow fiberglass grating	12" x 12"	FD-FG
with subway-style grating	12" x 12"	FD-SG

Note: Floor opening = 11 1/2" x 11 1/2"

for floor trough width	grate width x length	stainless steel model #	yellow fiberglass model #	gray fiberglass model #	Wide T-Bar fiberglass model #
12"	9" x 7 1/2"	341169	n/a	n/a	n/a
12"	9" x 9"	341117	362648	374015	370000
12"	9" x 12"	341123	362647	374018	370001
12"	9" x 15"	n/a	373030	374021	370002
15"	12" x 9"	340992	362650	374044	370003
15"	12" x 12"	331006	362649	374047	370004
18"	15" x 6"	341330	n/a	n/a	n/a
18"	15" x 7 1/2"	341110	n/a	n/a	n/a
18"	15" x 9"	341113	362652	374073	370005
18"	15" x 12"	336992	362651	374076	370006
18"	15" x 15"	345934	373206	374079	370007
24"	21" x 9"	341109	362654	374102	370008
24"	21" x 11"	351572	n/a	n/a	n/a
24"	21" x 12"	336976	362653	374105	370009

© 2024 Eagle Group. The Eagle Advantage™ is a trademark of Eagle Group.

Although every attempt has been made to ensure the accuracy of the data in this publication, we cannot be responsible for printing or typographical errors or omissions.



VALUE

QUALITY

RELIABILITY

Profit from the Eagle Advantage®

Corporate Headquarters • 100 Industrial Boulevard
Clayton, DE 19938-8903
• Phone: (302) 653-3000

Foodservice/SpecFAB® Divisions • Phone: (800) 441-8440
• Fax: (302) 653-2065

Material Handling Division • Phone: (800) 637-5100
• Fax: (302) 653-2065

www.eaglegrp.com

