

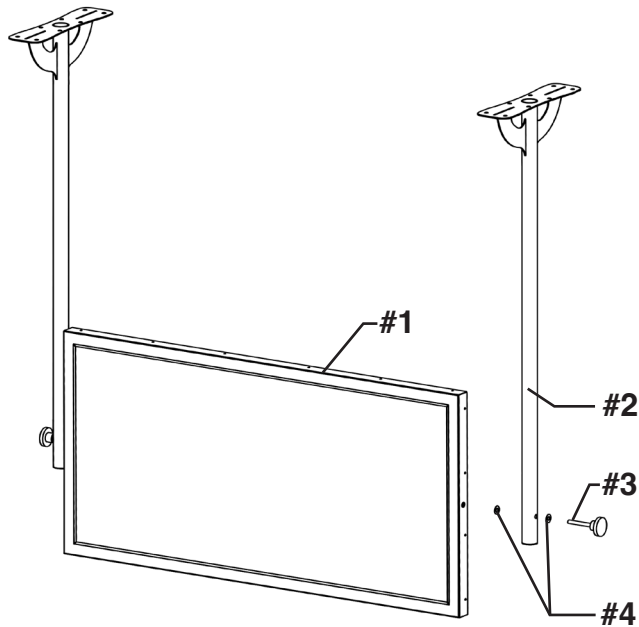
Ceiling Mounted Demo Mirror

ASSEMBLY INSTRUCTIONS

CAUTION

INSPECT CONTENTS IMMEDIATELY AND FILE CLAIM WITH DELIVERING CARRIER FOR ANY DAMAGE. **SAVE YOUR BOX AND ALL PACKING MATERIALS.** YOU ARE RESPONSIBLE FOR DAMAGE TO YOUR UNIT IF RETURNED IMPROPERLY PACKED.

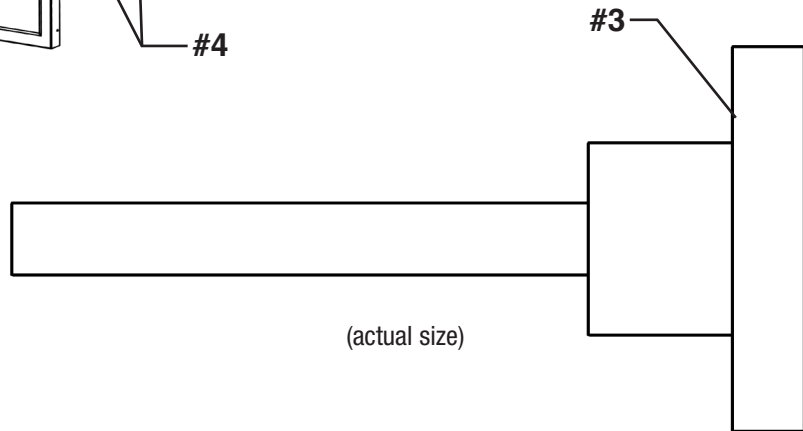
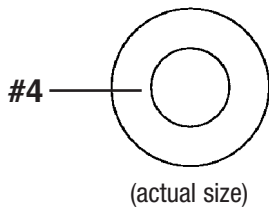
Parts List



<i>item #</i>	<i>qty</i>	<i>part #</i>	<i>description</i>
#1	1	*	mirror
#2	2	**	ceiling-mountable leg
#3	2	332094	3/8 - 16 x 3" hand knob
#4	4	305010	3/8" washer

* Part number varies by length ordered.

** Custom ordered.



Before assembly: This will be a two-person assembly. Do NOT try to assemble alone.

(continued on back page)

EG9965 Revised 01/24

Ceiling Mounted Demo Mirror

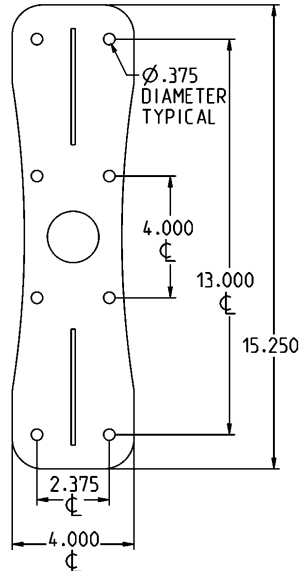
ASSEMBLY INSTRUCTIONS

Step 1 - Install legs to ceiling.

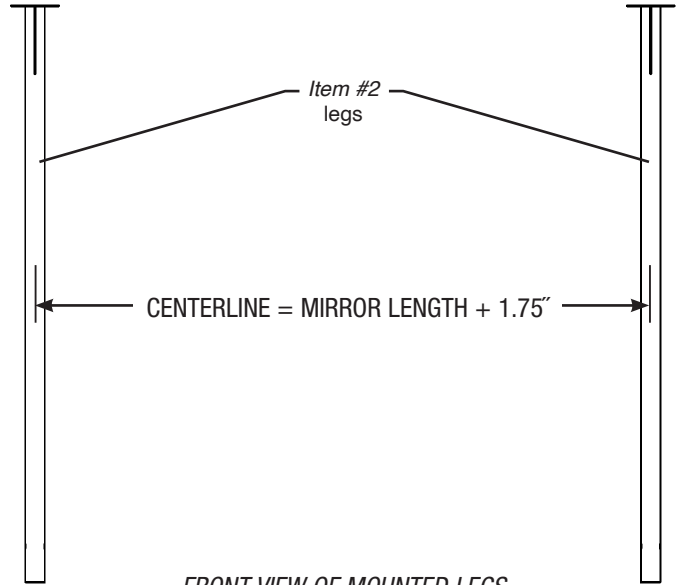
Follow the specifications below. Mounting hardware not included.

IMPORTANT NOTE:

Ceiling-mounted units must be attached to a properly constructed and sound ceiling. For ceilings constructed of wood or steel beams, the mounting points must be directly on the beams. Eagle Group cannot be held responsible for the failure of the device or any other devices due to improper installation.



DIMENSIONS OF MOUNTING PLATE



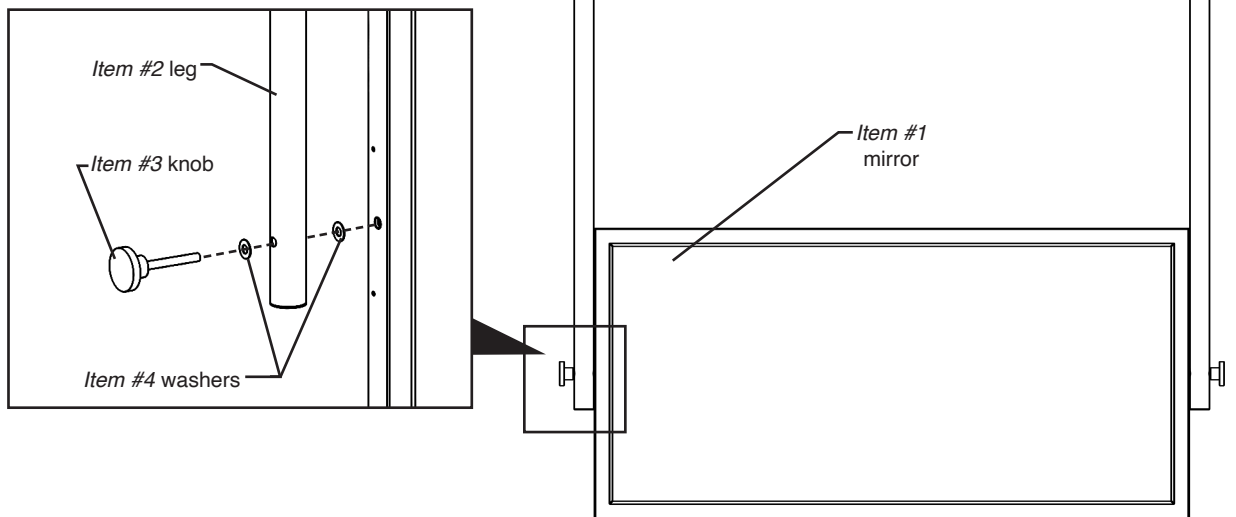
FRONT VIEW OF MOUNTED LEGS

Step 2 - Assemble mirror to legs.

- Align holes on mirror frame with holes in each leg.
- On each end of unit, run knob through leg & washers, and into mirror frame, as shown.
- Repeat on remaining end.



Assembly is complete.



Profit from the Eagle Advantage®

- 100 Industrial Boulevard, Clayton, Delaware 19938-8903 U.S.A.
- Phone: 302/653-3000 • 800/441-8440 • Fax: 302/653-2065
- www.eaglegrp.com • www.eaglemhc.com