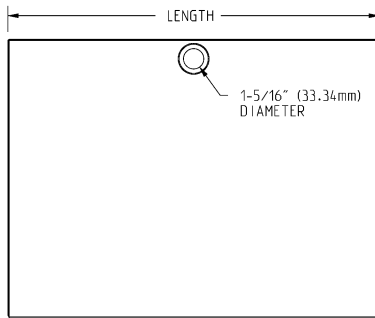


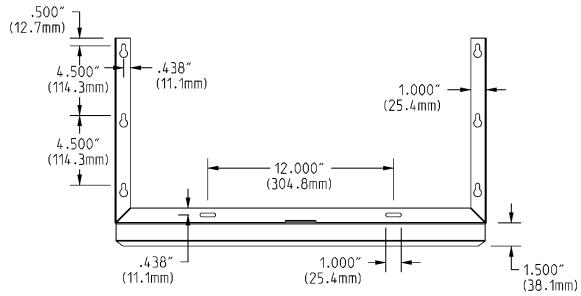
Specification Sheet

Short Form Specifications

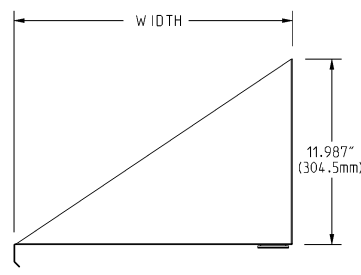
BlendPort® Microwave/Equipment Shelf, model _____.
Constructed of 18 gauge type 430 stainless steel, with a marine edge on front to prevent microwave from sliding forward.



TOP VIEW



FRONT VIEW



SIDE VIEW

model #	width		length		weight	
	in.	mm	in.	mm	lbs.	kg
BPMWS-1824	18"	457	24"	610	13	5.9
BPMWS-2030	20"	508	30"	762	21	9.5
BPMWS-2424	24"	610	24"	610	22	10.0

Item No.: _____
Project No.: _____
S.I.S. No.: _____

Table Accessories— Microwave/Equipment Shelves

MODELS:

- BPMWS-1224** **BPMWS-2030** **BPMWS-2424**

Design and Construction Features

- Space-saving wall mount design.
- Available in 18" x 24", 20" x 30", or 24" x 24" (457 x 610mm, 508 x 762mm, or 610 x 610mm) sizes.
- Heavy gauge stainless steel polished to #3 finish.
- Marine counter edge in front prevents microwave from sliding forward.
- Hole with black rubber grommet, centered at the rear of the shelf.