



Profit from the Eagle Advantage®

Specification Sheet

Short Form Specifications

Eagle Quik-Set® Solid Shelving, model _____.
Constructed of (16 gauge, 14 gauge) type 304 stainless steel or (16 gauge, 14 gauge) galvanized steel coated with (Valu-Master® Grey or Valu-Gard® Green) epoxy. 2" downturn and marine edge. Corners fitted with a heavy duty aluminum casting to receive a split sleeve. Available in Flat style, plus the following styles:

Embossed style: Top of shelf die-stamped with 1"-diameter drawn impression to provide for better air circulation. Each emboss is on 3" centers.

Louvered style: Top of shelf die-stamped with a 2 3/4" x 1/2" opening with a 1/16" drawn depression around the opening to provide reinforcement. Openings to be on 3" centers.



flat shelves
assembled with posts**

Options / Accessories

- Casters without brake**
- Casters with brake**

** See spec sheet #EG01.23A for further information on Quik-Set® components and accessories.

EAGLE GROUP

100 Industrial Boulevard, Clayton, DE 19938-8903 USA
Phone: 302-653-3000 • 800-441-8440 • Fax: 302-653-2065
www.eaglegrp.com
www.eaglegrpnews.com
www.eaglemhc.com

For custom configuration or fabrication needs, contact our SpecFAB® Division.
Phone: 302-653-3000 • Fax: 302-653-2065 • e-mail: quotes@eaglegrp.com

Item No.:	_____
Project No.:	_____
S.I.S. No.:	_____

Quik-Set® Solid Shelving

MODELS:

- | | | | |
|------------------------------------|------------------------------------|-----------------------------------|-----------------------------------|
| <input type="checkbox"/> SHDS1836* | <input type="checkbox"/> SHDS2436* | <input type="checkbox"/> HDS1836* | <input type="checkbox"/> HDS2436* |
| <input type="checkbox"/> SHDS1842* | <input type="checkbox"/> SHDS2442* | <input type="checkbox"/> HDS1842* | <input type="checkbox"/> HDS2442* |
| <input type="checkbox"/> SHDS1848* | <input type="checkbox"/> SHDS2448* | <input type="checkbox"/> HDS1848* | <input type="checkbox"/> HDS2448* |
| <input type="checkbox"/> SHDS1854* | <input type="checkbox"/> SHDS2454* | <input type="checkbox"/> HDS1854* | <input type="checkbox"/> HDS2454* |
| <input type="checkbox"/> SHDS1860* | <input type="checkbox"/> SHDS2460* | <input type="checkbox"/> HDS1860* | <input type="checkbox"/> HDS2460* |

* See charts on back for complete model numbers.

Design and Construction Features

- Designed specifically for heavy-duty loadbearing capacity.
- Three styles available: flat, embossed, and louvered.
- Constructed of either 14 or 16 gauge stainless steel, or 14 or 16 gauge galvanized steel with Valu-Master® gray epoxy or Valu-Gard® green epoxy.
- All sides constructed with a 2" (51mm) downturn and marine edge.
- Each corner is fitted with a heavy duty aluminum casting to accept a split sleeve.
- 1,000 lbs. (454 kg) evenly distributed weight capacity per shelf.
- No tools required for assembly to posts**.

Embossed Shelving

- Top of shelf is die-stamped with a 1" (25mm) diameter drawn impression to provide a raised area for air circulation.
- Each emboss is on 3" (76mm) centers for the width and 3" (76mm) centers for the length.

Louvered Shelving

- Top of shelf is die-stamped with a 2 3/4" x 1/2" (70 x 13mm) opening with a 1/16" (2mm) drawn depression around the opening to provide reinforcement.
- Each opening is on 3" (76mm) centers for the width and 3" (76mm) centers for the length.

Stainless Steel finish comes with a 15-year warranty.
Valu-Master® finish comes with a 5-year warranty.
Valu-Gard® finish comes with a 5-year warranty.

Certifications / Approvals



EG01.23 Rev. 05/23

Spec sheets available for viewing, printing or downloading from our online literature library at our websites



Profit from the Eagle Advantage®

Item No.: _____
 Project No.: _____
 S.I.S. No.: _____

Quik-Set® Solid Shelving

Flat Shelves

14 gauge			16 gauge			width		length	
model #	weight		model #	weight		in.	mm	in.	mm
	lbs.	kg		lbs.	kg				
SHDS1836*	24	10.9	HDS1836*	19	8.6	18"	457	36"	914
SHDS1842*	26	11.8	HDS1842*	21	9.5	18"	457	42"	1067
SHDS1848*	29	13.2	HDS1848*	24	10.9	18"	457	48"	1219
SHDS1854*	33	15.0	HDS1854*	27	12.2	18"	457	54"	1372
SHDS1860*	36	16.3	HDS1860*	29	13.2	18"	457	60"	1524
SHDS2436*	35	15.9	HDS2436*	28	12.7	24"	610	36"	914
SHDS2442*	39	17.7	HDS2442*	32	14.5	24"	610	42"	1067
SHDS2448*	43	19.5	HDS2448*	36	16.3	24"	610	48"	1219
SHDS2454*	48	21.8	HDS2454*	34	15.4	24"	610	54"	1372
SHDS2460*	55	25.0	HDS2460*	47	21.0	24"	610	60"	1524



* For **Stainless Steel** finish, add suffix "**SF**" to model number.

* For **Valu-Master**® gray epoxy finish, add suffix "**VF**" to model number.

* For **Valu-Gard**® green epoxy finish, add suffix "**VGF**" to model number.

Embossed Shelves

14 gauge			16 gauge			width		length	
model #	weight		model #	weight		in.	mm	in.	mm
	lbs.	kg		lbs.	kg				
SHDS1836*	24	10.9	HDS1836*	19	8.6	18"	457	36"	914
SHDS1842*	26	11.8	HDS1842*	21	9.5	18"	457	42"	1067
SHDS1848*	29	13.2	HDS1848*	24	10.9	18"	457	48"	1219
SHDS1854*	33	15.0	HDS1854*	27	12.2	18"	457	54"	1372
SHDS1860*	36	16.3	HDS1860*	29	13.2	18"	457	60"	1524
SHDS2436*	35	15.9	HDS2436*	28	12.7	24"	610	36"	914
SHDS2442*	39	17.7	HDS2442*	32	14.5	24"	610	42"	1067
SHDS2448*	43	19.5	HDS2448*	36	16.3	24"	610	48"	1219
SHDS2454*	48	21.8	HDS2454*	34	15.4	24"	610	54"	1372
SHDS2460*	55	25.0	HDS2460*	47	21.0	24"	610	60"	1524



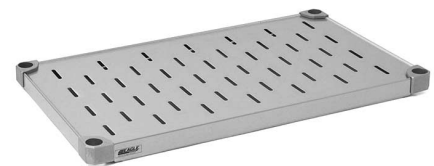
* For **Stainless Steel** finish, add suffix "**SE**" to model number.

* For **Valu-Master**® gray epoxy finish, add suffix "**VE**" to model number.

* For **Valu-Gard**® green epoxy finish, add suffix "**VGE**" to model number.

Louvered Shelves

14 gauge			16 gauge			width		length	
model #	weight		model #	weight		in.	mm	in.	mm
	lbs.	kg		lbs.	kg				
SHDS1836*	22	10.0	HDS1836*	17	7.7	18"	457	36"	914
SHDS1842*	24	10.9	HDS1842*	19	8.6	18"	457	42"	1067
SHDS1848*	27	12.2	HDS1848*	22	10.0	18"	457	48"	1219
SHDS1854*	31	14.1	HDS1854*	25	11.3	18"	457	54"	1372
SHDS1860*	34	15.4	HDS1860*	27	12.2	18"	457	60"	1524
SHDS2436*	33	15.0	HDS2436*	26	11.8	24"	610	36"	914
SHDS2442*	37	16.8	HDS2442*	30	13.1	24"	610	42"	1067
SHDS2448*	41	18.6	HDS2448*	34	15.4	24"	610	48"	1219
SHDS2454*	47	21.0	HDS2454*	39	17.7	24"	610	54"	1372
SHDS2460*	53	24.0	HDS2460*	45	20.4	24"	610	60"	1524



* For **Stainless Steel** finish, add suffix "**SL**" to model number.

* For **Valu-Master**® gray epoxy finish, add suffix "**VL**" to model number.

* For **Valu-Gard**® green epoxy finish, add suffix "**VGL**" to model number.

EAGLE GROUP

100 Industrial Boulevard, Clayton, DE 19938-8903 USA

Phone: 302-653-3000 or 800-441-8440 • Fax: 302-653-2065

www.eaglegrp.com • www.eaglegrpnews.com • www.eaglehmc.com

Printed in U.S.A.

©2023 by Eagle Group

Rev. 05/23

Spec sheets available for viewing, printing or downloading from our online literature library at our websites

Although every attempt has been made to ensure the accuracy of the information provided, we cannot be held responsible for typographical or printing errors. Information and specifications are subject to change without notice. Please confirm at time of order.