

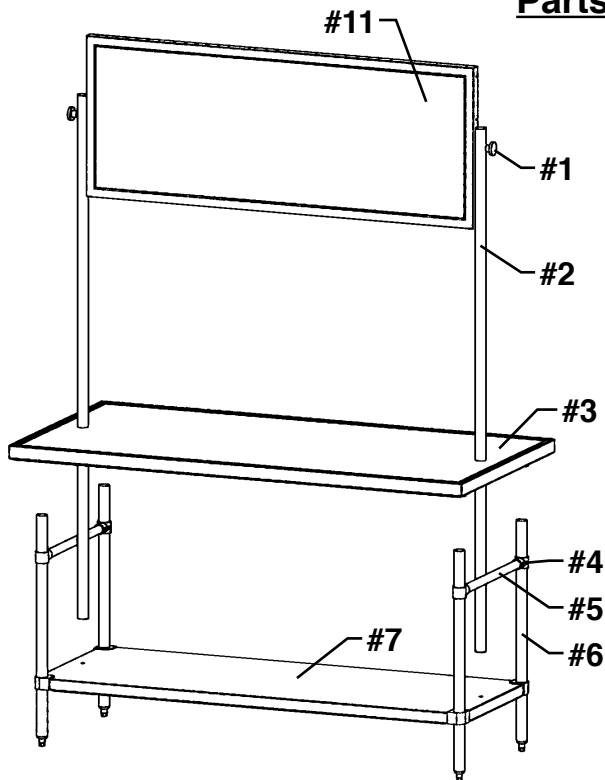
Demo Tables

ASSEMBLY INSTRUCTIONS

CAUTION

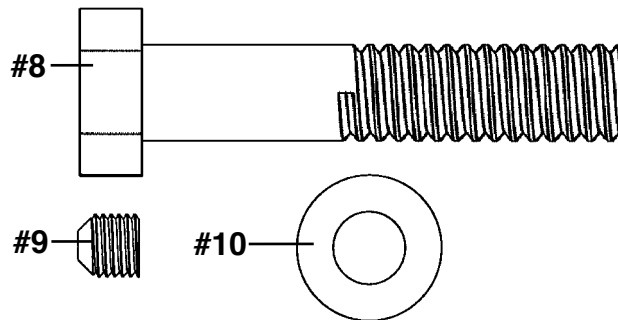
INSPECT CONTENTS IMMEDIATELY AND FILE CLAIM WITH DELIVERING CARRIER FOR ANY DAMAGE. **SAVE YOUR BOX AND ALL PACKING MATERIALS.** YOU ARE RESPONSIBLE FOR DAMAGE TO YOUR UNIT IF RETURNED IMPROPERLY PACKED.

Parts List



item #	qty	part #	description
#1	2	332094	3/8 - 16 x 3" hand knob
#2	2	YTR10231-02	78 3/8" leg
#3	1	*	tabletop
#4	4	317646	crossbrace fitting
#5	2	317643	crossbrace tubing
#6	4	300317	33" leg
#7	1	*	undershelf
#8	2	304143	1/2 - 13 x 2 1/2" hexcap bolt
#9	4	311243	5/16 - 24 set screw
#10	4	305010	3/8" washer
#11	1	*	mirror

* Part number varies by length of table ordered.



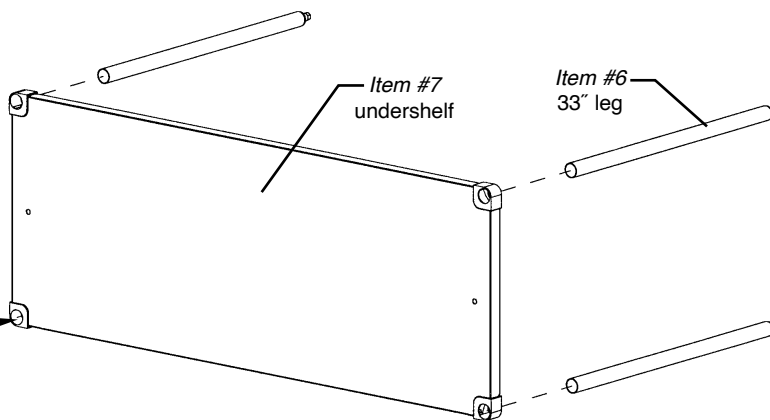
(actual size of hardware)

Before assembly: This will be a two-person assembly. Do NOT try to assemble alone.

Step 1 - Assemble 33" legs to undershelf.

- Be sure undershelf is level.
- Recommended height from the floor to the top of the undershelf is 10".

NOTE: Locking bolt found inside each casting. Do not overtighten castings or failure will occur. Use 1/2" allen wrench (not shown).



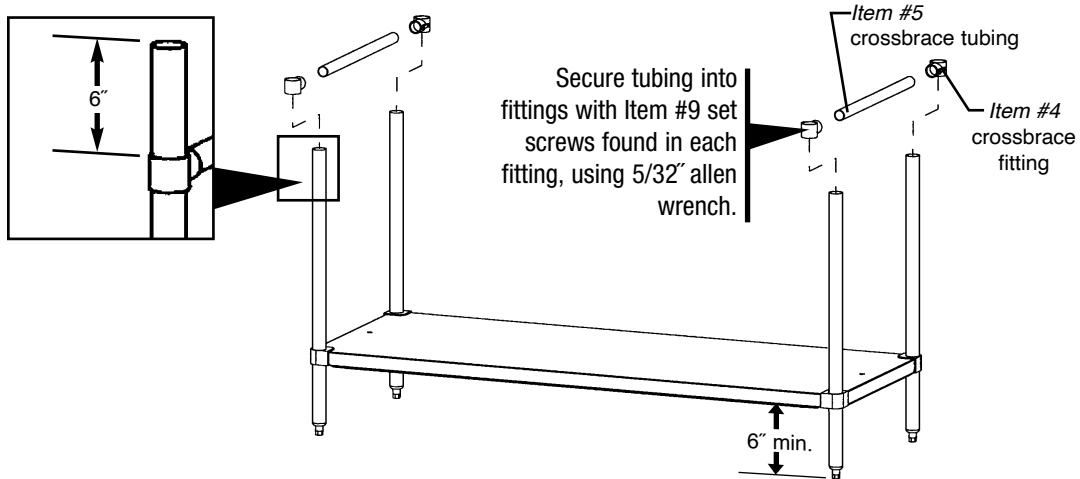
(continued on back page)

EG9969 Revised 12/23

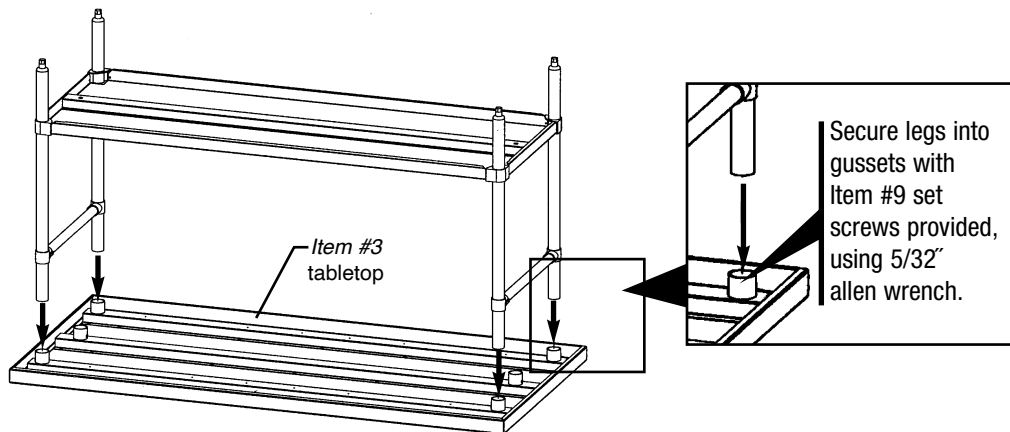
Demo Tables

ASSEMBLY INSTRUCTIONS

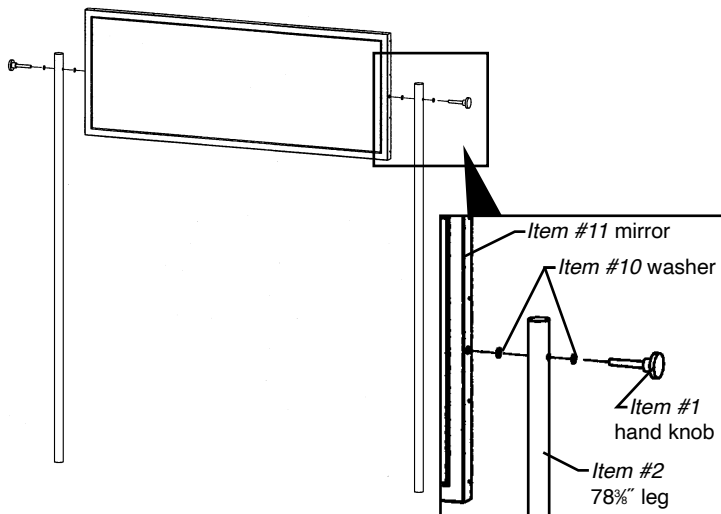
Step 2 - Assemble crossbrace tubing and crossbrace fittings.



Step 3 - Assemble top. Set upright.

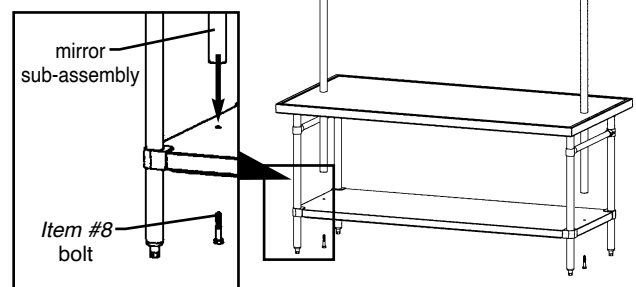


Step 4 - Assemble mirror to 78" legs.



Step 5 - Attach mirror sub-assembly to table.

Secure bolts with 3/4" wrench.



Profit from the Eagle Advantage®

- 100 Industrial Boulevard, Clayton, Delaware 19938-8903 U.S.A.
- Phone: 302/653-3000 • 800/441-8440 • Fax: 302/653-2065
- www.eaglegrp.com • www.eaglehmc.com