

1800 Series • 2200 Series • Spec-Bar®

# Underbar Equipment

**EAGLE**  
GROUP  
*Profit from the Eagle Advantage®*

# Table of Contents



## 1800 Series and 2200 Series

Custom Underbar .....13

Options/Accessories/Replacements .....12

### Product Listing:

Blender Modules .....	5
Combination Units.....	3
Cocktail Units .....	4
Cocktail Workstations .....	4
Corner Drainboards.....	9
Glass Rack Storage Units.....	7
Ice Chests .....	5
Liquor Display Units .....	6
Modular Add-On Fillers, Storage and Workboards .....	9
Modular Add-On Hand Sinks .....	8
Modular Add-On Step-Down Units .....	8
Modular Angle Fillers.....	9
Modular Bar Die .....	10
Pass-Thru Ice Chests .....	7
Portable Bars .....	11
Underbar Sinks .....	3
Workboards .....	6



## Spec-Bar® Series

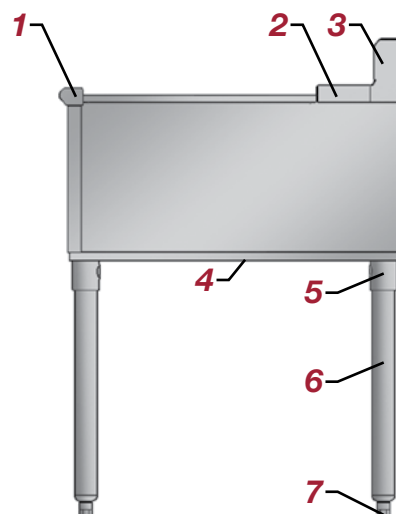
Better vs. Best.....15

Introduction .....14

### Product Listing:

Blender Stations .....	19
Cocktail Stations.....	20
Dump Sinks with Glass Rinser.....	rear cover
Glass Rinsers .....	20
Portable Bar.....	21-22
Ice Chests .....	16
Mobile Ice Caddies .....	rear cover
Modular Bar Die .....	10
Sinks .....	17-18
Storage & Accessories .....	23
Workboards .....	18-19

## A number of great features on 1800 & 2200 Series units



### 1. Bullnose Front Edge

Stainless Steel •  $\frac{7}{16}$ " radius •  $1\frac{1}{2}$ " wide

### 2. Rear Deck (2200 Series only)

Stainless steel • 4" width • "V" edge

### 3. Backsplash

Stainless steel •  $4\frac{1}{2}$ "-high •  $45^\circ$  bevel

### 4. Hat channels

Stainless steel • Front-to-back

### 5. Gussets

Zinc-plated mild steel • Set screws included

### 6. Legs

Galvanized •  $1\frac{1}{8}$ "-diameter

### 7. Feet

Hi-impact plastic • Adjustable

**All units are modular, allowing for custom configurations using standard components.**

## UNDERBAR SINKS



1800 Series sink



2200 Series sink

Units are modular, allowing for custom configuration using standard components. Units feature 20 gauge type 304 stainless steel construction; available in a variety of sizes, from 3' to 8' length; with two-, three-, or four-compartment sinks, all of which are one-piece and deep-drawn. Units also feature 10" x 14" x 10" bowls, two sets of galvanized legs, 1½" nps drains with standpipe overflows, and 4 ½" high backsplash.

**1800 Series units:** Features splash mount 4" center faucet with 10" spout (four-bowl units come with two faucets). 20" Front-to-back.

**2200 Series units:** Features deck mount 4" center faucet with 12" spout (four-bowl units come with two faucets). 4" wide rear deck featuring a "v" edge to retard spillage. 24" Front-to-back.



**AVAILABLE OPTIONS\* INCLUDE:** Stainless steel leg kits • Leg & faucet upgrade kits • Speed rails

## COMBINATION UNITS



Model #BC9C-18L 1800 Series combination unit



Model #BC8C-22R 2200 Series combination unit

All units feature 20 gauge, type 304 stainless steel construction. Lengths available range from 7' to 10'. Models also include 10" x 14" x 10" sink bowls, three sets of galvanized legs, 1½" NPS drains with removable standpipe overflow, 15 ½" x 19 ¾" x 8" ice bins located on the left or right end of the unit, speed rail, 4" center faucet with 10" spout (4-bowl units come with two faucets), and 4 ½" high backsplash.

**1800 Series units:** 20" front-to-back.

**2200 Series units:** Includes 4" wide rear deck with "V" edge. 24" front-to-back.

**AVAILABLE OPTIONS\* INCLUDE:** Stainless steel leg kits • 7-circuit sealed-in post-mix cold plate • Leg & faucet upgrade kits

\* See page 12 for more available options, accessories, and replacements.

## 1800 Series and 2200 Series

### COCKTAIL UNITS



*1800 Series  
cocktail unit*



*2200 Series  
cocktail unit*



All units are modular, providing for custom configurations using standard components. Units feature 20 gauge type 304 stainless steel front. Bottom, ends, back panels and ends are galvanized steel construction. Fabricated ice bins are insulated and available in depths of 8", 12", and 16". Units also include 4 1/2" backsplash, 6- or 8-bottle capacity, two sets of galvanized legs, 1 1/2" NPS drain, and adjustable plastic feet.

Units available with or without cold plate. For units with cold plate: Post-mix cold plates are aluminum casting with 7 stainless steel beverage grade tubing circuits. Mounted flush with bottom interior of unit for easy cleaning and maximum efficiency. 1/4" tube connections provided.

**1800 Series units:** End-to-end lengths available in 24" and 36". 20" front-to-back.

**2200 Series units:** End-to-end lengths range from 24" to 40". Includes 4" wide rear deck with "V" edge. 24" front-to-back.

**AVAILABLE OPTIONS\* INCLUDE:** Stainless steel leg kits • Stainless steel sliding cover • Speed rail

### COCKTAIL WORKSTATIONS

All units are modular, providing for custom configurations using standard components. Units feature 304 series stainless steel construction with a highly polished finish. End panels are galvanized. 48" and 60" lengths available. Fabricated ice bins are insulated, 8" deep, located either on left or right. Models also include 24" stainless steel single speed rail, 4 1/2" backsplash, two sets of galvanized legs with non-marking plastic bullet feet, and 4 1/2" NPS drain with 1 1/2" x 4" tailpiece.

Units available with or without cold plate. For units with cold plate: Post-mix cold plates are aluminum casting with 7 stainless steel beverage grade tubing circuits. Mounted flush with bottom interior of unit for easy cleaning and maximum efficiency.



**1800 Series Units:** 70-lb. ice capacity.  
20" front-to-back.



**2200 Series Units:** 75-lb. ice capacity.  
4" wide rear deck with "V" edge. 24" front-to-back.

**AVAILABLE OPTIONS\* INCLUDE:**

Stainless steel leg kits • Additional speed rail

*\* See page 12 for more available options, accessories, and replacements.*



## ICE CHESTS

All units are modular, providing for custom configurations using standard components. End-to-end lengths range from 12" to 48". All models feature stainless steel type 304 fabricated ice bin available with 8", 12", or 16", depth. 4½" backsplash, stainless steel front and galvanized ends and back panel. Also includes 1½" NPS drain centered in ice bin front-to-back (drain is ½" NPS for ice chests with cold plates), 1½" diameter heavy gauge galvanized tubular legs with 12 gauge gussets, and plastic bullet feet. All models come standard with stainless steel sliding covers. Fiberglass insulation for non-cold plate models.

For models with cold plates: Foamed-in-place insulation. Cold plates are aluminum casting with seven stainless steel beverage grade tubing circuits. Mounted flush with interior bottom of ice bin for easy cleaning and maximum efficiency. ¼" tube connections provided.



1800 Series with 8"-deep ice bin

**1800 Series Units:** 20" front-to-back.



2200 Series with 12"-deep ice bin

**2200 Series Units:** 4" wide rear deck with "V" edge. 24" front-to-back.

### AVAILABLE OPTIONS\* INCLUDE:

Stainless steel leg kits • Speed rail



## BLENDER MODULES

All units are modular, providing for custom configuration using standard components, and feature stainless steel type 304 construction. Units include two sets of galvanized legs, 9"-deep x 12"-wide blender recess on 24" and 36" models, 14"-wide blender modules on 50" and 62" models. Blender recess may be located on either side. 15A 120V receptacle mounted for field wiring, liquid waste shoot with 1½" NPS drain, strainer, faucet, tail piece, and adjustable plastic bullet feet. Left- and right-hand models available.

Units available with either 10" x 14" x 9½" deep-drawn sink or 15½" x 19¾" x 8" fabricated ice chest. Units with ice chest available with or without cold plate. For units with cold plate: Post-mix cold plates are aluminum casting with 7 stainless steel beverage grade tubing circuits. Mounted flush with bottom interior of unit for easy cleaning and maximum efficiency.



1800 Series unit

**1800 Series Units:** 75-lb. ice capacity (for units with ice chest). 20" front-to-back.

**2200 Series Units:** 63-lb. ice capacity (for units with ice chest). 4" wide rear deck with "V" edge. 24" front-to-back.



2200 Series unit

**AVAILABLE OPTIONS\* INCLUDE:** Stainless steel leg kits • Speed rail • Bottle opener & cap catcher

\* See page 12 for more available options, accessories, and replacements.

## 1800 Series and 2200 Series

# WORKBOARDS



1800 Series workboard



2200 Series workboard

All models are modular, and feature stainless steel type 304 work surfaces, front and 4½" backsplash. Galvanized ends and back panel. Also includes two sets of welded 1½"-diameter heavy gauge galvanized tubular legs with 12 gauge gussets, adjustable plastic bullet feet, 1½" NPS center drain for easy cleanup and embossed drain surface for ease of draining.

**1800 Series Units:** 20" front-to-back.  
**2200 Series Units:** 4" wide rear deck with "V" edge. 24" front-to-back.

**AVAILABLE OPTIONS\* INCLUDE:** Stainless steel leg kits • Speed rail • Bottle opener & cap catcher

## LIQUOR DISPLAY UNITS

All models are modular, and feature stainless steel welded construction. Models include two sets of 1½" diameter galvanized legs, non-marking plastic bullet feet, galvanized zinc plated gussets, 4¾" high backsplash, 24" side-to-side with 4¾" wide steps. 33½" overall height. Full length 2¼"-high bottle support rail per row of bottles. 22 gauge solid ends. Units provide storage under the bar for liquor and glass storage.

**1800 Series Units:** 19½" front-to-back.

**2200 Series Units:** 4" wide rear deck with "V" edge. 23½" front-to-back.



1800 Series liquor display unit



2200 Series unit



▶ **1800 & 2200 Series Lower-Tier Units available for MORE UNDERBAR CLEARANCE!**

**AVAILABLE OPTIONS\* INCLUDE:**

Stainless steel leg kits • Speed rail • Bottle opener & cap catcher

\* See page 12 for more available options, accessories, and replacements.

# GLASS RACK STORAGE UNITS



1800 Series units



2200 Series unit

All units are modular, providing for custom configurations using standard components and feature stainless steel construction. Designed to accommodate nominal 20" x 20" glass racks. 24" side-to-side. Available with flatboard top, recessed workboard top featuring removable stainless steel perforated insert with  $\frac{3}{8}$ " stainless steel drain, or open top. All units feature  $1\frac{1}{2}$ " NPS stainless steel drain on bottom. Units with recessed workboard top feature tubing to channel water from workboard top to bottom drain. Adjustable stainless steel rack slide assembly. Heavy duty galvanized legs. Adjustable plastic bullet feet.

**1800 Series Units:** 20" front-to-back.

**2200 Series Units:** 24" front-to-back. 4" wide rear deck with "V" edge.

**AVAILABLE OPTIONS\* INCLUDE:** Stainless steel leg kits • Stainless steel adjustable bullet feet • Additional rack storage slides

## PASS-THRU ICE CHESTS



pass thru ice chest with lid

Heavy gauge stainless steel top and front, with galvanized sides.  $1\frac{1}{2}$ " stainless steel drain with tail piece standard. Fiberglass insulation. Available with 7-circuit cold plate, featuring foamed-in-place insulation and  $\frac{1}{2}$ " NPS pipe nipple drain. Sliding cover standard on all models. Legs are heavy gauge  $1\frac{5}{8}$ " diameter galvanized steel with adjustable feet. Available in widths of 18" and 24". All models are 36" in length.

Units available with or without cold plate. For units with cold plate: Post-mix cold plates are aluminum casting with 7 stainless steel beverage grade tubing circuits. Mounted flush with bottom interior of unit for easy cleaning and maximum efficiency.

**AVAILABLE OPTIONS\* INCLUDE:** Stainless steel leg kits

\* See page 12 for more available options, accessories, and replacements.

## 1800 Series and 2200 Series

# MODULAR ADD-ON STEP-DOWN UNITS



Type 304 stainless steel construction. 1½"-diameter tubular galvanized legs. Add-on units attach to either end of underbar unit via predrilled mounting holes and pan-head screws. Available for use with both 1800 and 2200 Series.



*single step-down unit*

### SINGLE STEP-DOWN UNITS

NEMA 5-15R, 120-volt 15-amp, duplex GFCI receptacle with waterproof cover plate. Includes galvanized legs.

### LIQUID WASTE STEP-DOWN UNITS

NEMA 5-15R, 120-volt 15-amp, duplex GFCI receptacle with waterproof cover plate. Includes 6" diameter liquid waste assembly with removable stainless steel perforated liner, 1½" NPS drain, and faucet.



*liquid waste step-down unit*

### DOUBLE STEP-DOWN UNITS

NEMA 5-15R, 120-volt 15-amp, duplex GFCI receptacle with waterproof cover plate.



*double step-down unit*

### SINK STEP-DOWN UNITS

NEMA 5-15R, 120-volt 15-amp, duplex GFCI receptacle with waterproof cover plate. Includes 10" x 14" sink with 1½" NPS drain and deck-mount faucet.



*sink step-down unit*

**AVAILABLE OPTIONS\* INCLUDE:** Stainless steel leg kits



## MODULAR ADD-ON HAND SINKS

Top, front, sink and backsplash are heavy gauge type 304 stainless steel. Sink to be deep-drawn 10" x 14" x 10" deep with faucet, splash mounted. Predrilled mounting holes on both ends. Two knocked-down channel/gusset and galvanized leg assemblies with adjustable bullet feet furnished.



### MODULAR ADD-ON HAND SINKS

Modular add-on hand sinks align to adjoining 1800 series or 2200 series units via predrilled mounting holes and pan-head screws. Add-On units attach to either end of underbar unit.



# MODULAR ADD-ON FILLERS, STORAGE AND WORKBOARDS



Units feature type 304 stainless steel construction, 1½" diameter tubular galvanized legs. Add-on units attach to either end of underbar unit via predrilled mounting holes and pan-head screws.



filler with tube chase

## FILLERS WITH TUBE CHASE

4" x 4" tubing chase stands 6½" tall. "V"-edge around perimeter to retard spillage.

## STORAGE BASE UNITS

Provides storage underneath underbar units. Available in widths of 12" and 18".



storage base unit



workboard

## WORKBOARDS

Provides extra work space. Includes 1½" NPS drain.

## BOTTLE STORAGE UNITS

Available with or without insulation. Insulated units feature foamed-in-place insulation on all four sides and bottom. Removable bottle racks hold up to eight 4" diameter bottles.



bottle storage unit

# MODULAR ANGLE FILLERS AND CORNER DRAINBOARDS

## MODULAR ANGLE FILLERS

Stainless steel front and top. Galvanized steel sides. Joins 1800 or 2200 Series units by the corners. Front and rear fillers available in angles of 30°, 45°, 60° and 90°. All units have predrilled mounting holes.

## CORNER DRAINBOARDS

Galvanized panels attach to other equipment, stainless steel outer panels remain visible. Joins 1800 or 2200 Series units by the corners. Rear corner drainboard provided with one 1½" diameter leg. All units have predrilled mounting holes.

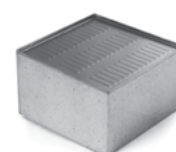
**AVAILABLE OPTIONS\* INCLUDE:** Side and leg set (for Corner Drainboards)



front angle filler



rear angle filler



front corner drainboard



rear corner drainboard

\* See page 12 for more available options, accessories, and replacements.

## MODULAR BAR DIE

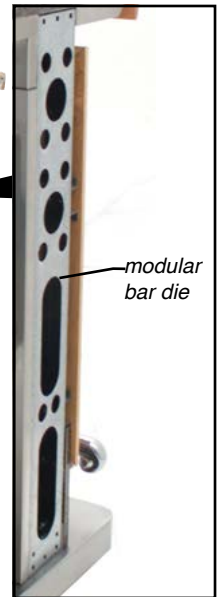
Eagle's 1800 and 2200 Series underbar equipment can be mounted to, or placed against, these modular bar dies (bar dies must be securely fastened to the floor. For added stability, fasten one or both ends to a wall). Bar dies enclose and hide beverage lines, electrical lines, and plumbing lines in a chase incorporated into the unit. The chase serves as a rear wall and splash. Front of the bar can be covered by removable panels that provide easy access to the chase for future modifications and maintenance. Panels can be covered in a decorative laminate, an elegant wood millwork finish or a stunning stainless steel finish.

### AVAILABLE OPTIONS\* INCLUDE:

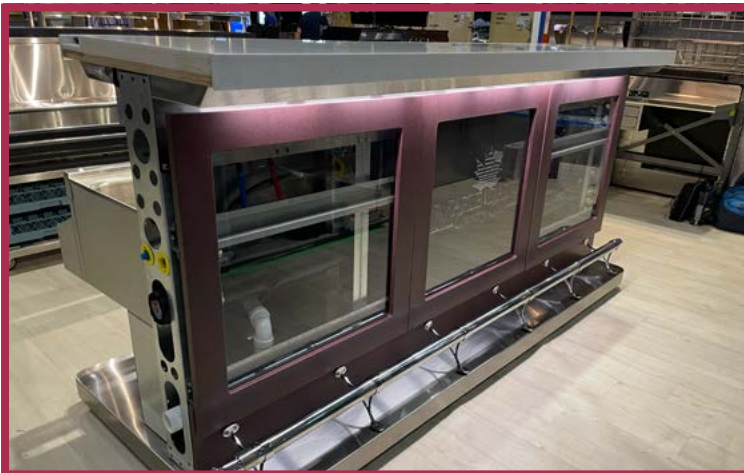
Decorative rails & fittings • U.L. wiring and plumbing package



1800 Series equipment shown with modular bar die  
(note: base shown for display only)



\* See page 12 for more available options, accessories, and replacements.



## PORTABLE BARS

### - Standard



standard portable bar

Standard Portable Bar includes: 4" x 1" plate casters, two with brake. Choice of black, white, or "vintage" melamine exterior, with matching formica top. stainless steel interior working surface. 10" x 14" x 9 1/2" ice bin with 1 1/2" NPS drain. Two stainless steel speed rails. Two soda gun openings, speed rails and front corner guards. Corner guards. Stainless steel towel ring. Shipped assembled. 63" length.

#### AVAILABLE OPTIONS\* INCLUDE:

- 7-circuit post-mix sealed-in cold plate
- Decorative laminates



### - Deluxe



deluxe portable bar

Deluxe Portable Bars include: 4" x 1" plate casters, two with brake. Choice of black, white, or "vintage" melamine exterior, with matching formica top and stainless steel interior working surface. 10" x 14" x 9 1/2" ice bin with 1 1/2" NPS drain. Adjustable stainless steel glides for storage racks. Center locking storage cabinet. Two soda gun openings and front corner guards. Double-tier stainless steel speed rail. Corner guards. Shipped assembled. All models are 63" in length.

#### AVAILABLE OPTIONS\* INCLUDE:

- 7-circuit post-mix sealed-in cold plate
- Decorative laminates



## Custom Graphics available!

*LASER-CUTTING AND CUSTOM DECAL SERVICES FOR PORTABLE BARS!*

### Laser-Cutting Service...

- Offers a "high-tech" look.
- Creates smooth curves along text and/or artwork.
- Materials includes various plastics, woods, and designer aluminum.



(custom laser-cut for NAFEM 2023 show)



(custom laser-cut for Rehoboth Beach Country Club, Rehoboth Beach, DE)

### Decal Service...

- Factory-applied decals are industrial-strength, yet more economical.
- Image(s) printed on vinyl material with adhesive backing.

\* See page 12 for more available options, accessories, and replacements.



## ACCESSORIES / REPLACEMENTS



standard faucet

### FAUCETS

Splash mount, 4" centers, 10" spout. Standard grade and T&S available.



T&S faucet

### SPEED RAILS

With keyholes. For liter-size bottles. Single- and Double-Tier available, ranging from 22" to 70" length. Optional hanging straps available for speed rails up to 60" long.



single-tier speed rail



double-tier speed rail

### DRAINS / PLUMBING

Options available include 1 1/2" NPS drain, lock nut for drains, 1/2" nipple drain for cold plate, p-trap, 7" overflow pipe, and mini crumb cup.



mini crumb cup



overflow pipe



drain



P-trap



### CLIP-ON CONDIMENT TRAY/HOLDER

Six pint-size removable condiment tray inserts. Stainless steel body. Plexiglass lid with stainless steel hinge.



bottle holder

### BOTTLE OPENER & CAP CATCHER

Cast iron bottle opener. Stainless steel cap catcher with keyhole for mounting.



bottle opener



bottle holder tray

### BOTTLE HOLDERS / BOTTLE HOLDER TRAYS

Plastic. Holders accommodate single bottles. Trays hold four bottles.

### STAINLESS STEEL LEG KITS

Sets of 18 gauge stainless steel ("s/s") legs available to replace standard galvanized legs. Legs available with or without s/s feet, with s/s gussets, or with both s/s feet and gussets.

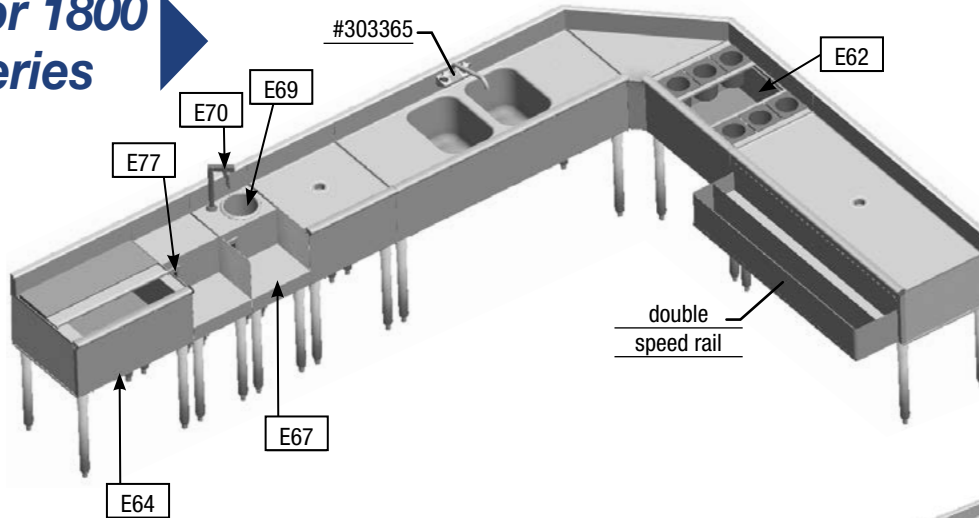


cap catcher

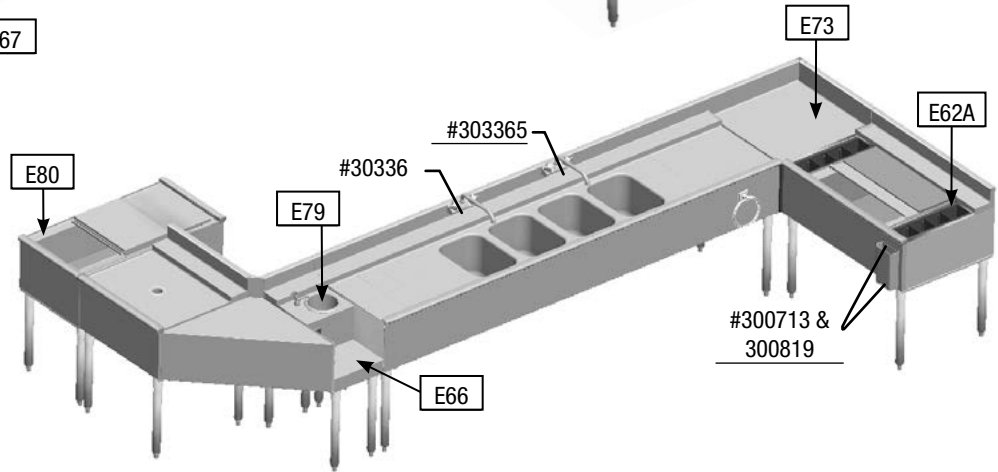


## CUSTOM UNDERBAR

**For 1800 Series**



**For 2200 Series**



model #	description	model #	description
E60	Workboards (minimum 4' 0") per linear foot	300712	Towel bar, 24" (610mm)-long, stainless steel - shipped loose
Sinks:		300670	Sliding s/s ice cover for 15½" x 19¼" bowl (non NSF)
E61	- hand sink 10" x 14" x 5" w/drain faucet	300325	Rack for round bottle wells
E61A	- sink bowl 10" x 14" x 9½" w/drain, faucet & overflow	300491	Bottle holder, individual
E61B	- sink bowl 12" x 14" x 9½" w/drain, faucet & overflow	300805	Bottle holder trays (not installed) hold 4 bottles each
Cocktail units 15½" x 19¼" bowls:		326636	Poly cutting board 15" x 15" x ½" (not attached) poly-plastic
E62	- 24" unit, 6 bottle wells, inside liner, no cover	303365	Faucet - 10" spout, splash mount
E62A	- 36" unit, 8 bottle wells, outside liner, sliding s/s cover	E76	Divider for ice chest (removable), installed at factory
E63	Ice chest 15½" x 19¼" x 8" deep	300713	Bottle opener and
E64	Ice chest w/sliding s/s cover 15½" x 19¼" x 8" deep	300819	Cap catcher (not attached)
E65	Higher backsplash up to 9" high per linear foot	E77	Duplex GFCI receptacle, installed
Blender step unit w/liquid waste chute, faucet, electrical outlet:		359032	Post-mix cold plate for 15½" x 19¼" bowl, 7-circuit, sealed-in(NSF)
E66	- 12" wide single station	E78	Glass rack storage, holds (2) 20" x 20" racks
E66A	- 14" wide double station	E79	Dipperwell with faucet
E67	Blender recess 12" (305mm) wide with electrical GFCI outlets	Pass-thru ice chests:	
E68	Open waste chute installed	E80	- 18" x 36" x 8"
E69	Liquid waste chute installed	E80A	- 24" x 36" x 8"
E70	Glass filler	E81	Stainless steel leg, each
E71	Cutout in back (2200 Series only)	300293	Plastic bullet foot, each
E72	End splash per end	E83	NSF sprayed-on sound deadening, up to 12' (3658mm) length - for each additional foot
E73	"L" shape corner welded per corner (except sink bowls)	*	Modular Add-on Fillers and Corner Drainboards—front and rear sections
E74	Pass-thru	**	Double speed rail
E75	Blender shelf 12" wide, removable hook-on type		

\* See Spec Sheet #EG40.56 for other Underbar Accessories and Replacements.

\*\* See Spec Sheets #EG40.57 for 1800 Series and #EG40.58 for 2200 Series Modular Angle Fillers and Corner Drainboards.

## - Applications -



A complete line of the most flexible design in stainless steel underbar equipment that allows you to customize your specifications with simple modular design for easy installation.

With SPEC-BAR®, we design the bar to suit your needs. Eagle offers a wide variety of components including sinks, ice chests, cocktail units, filler boards and workboard combination units. These units come as modular sections and attach to the bar die to form the bar you imagined. The 12 gauge bar die allows for pedestal mount or a free standing unit.

Plus, to accent your SPEC-BAR® we offer solid surface designs in hundreds of colors, many decorative solid brass or chrome rails and fittings, hundreds of colors and patterns available in our laminate line, and the solid elegance of walnut, oak, cherry, maple, red oak, and mahogany bar panels to add character to any room.

**WITH THE SPEC-BAR® BAR DIE SYSTEM, YOU CAN OPT FOR FACTORY PLUMBING AND WIRING TO A UL-LISTED LOAD CENTER.**

**THAT, COMBINED WITH OUR MILLWORK CAPABILITIES, WILL ALLOW FOR**



**TURNKEY INSTALLATIONS.**



*Removable front panels expose the chase for repairs and modifications.*



*Incorporate options and accessories to utilize space and enhance workflow.*



*Arrange the modular components in an order that best suits your needs.*

## - Modular Bar Die for Spec-Bar® -

Designed for Spec-Bar® underbar equipment to be mounted to and supported by the bar die. Bar die encloses and hides beverage, electrical and plumbing lines in a chase incorporated into the unit. Front of the bar can be covered by removable panels which provide easy access to the chase for future modifications and maintenance. Panels can be covered in a decorative laminate, an elegant wood millwork finish or a stunning stainless steel finish. Add decorative brass or chrome rails and fittings to match any decor.



*Solid surface design in hundreds of colors, lends natural tones and rich textures*



*Many decorative solid brass, chrome rails and fittings are available.*



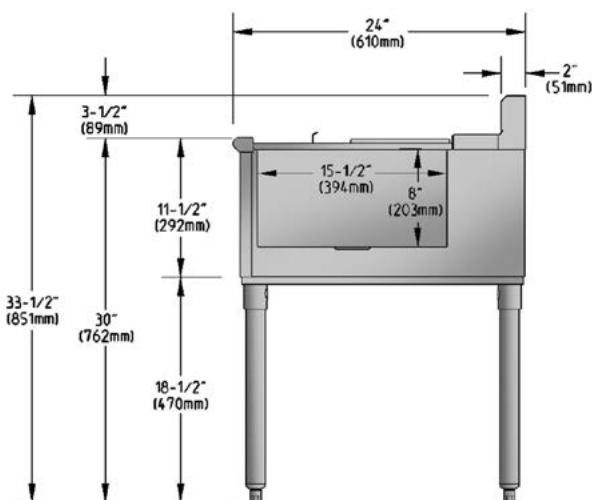
*Hundreds of colors and patterns available in the laminate line.*



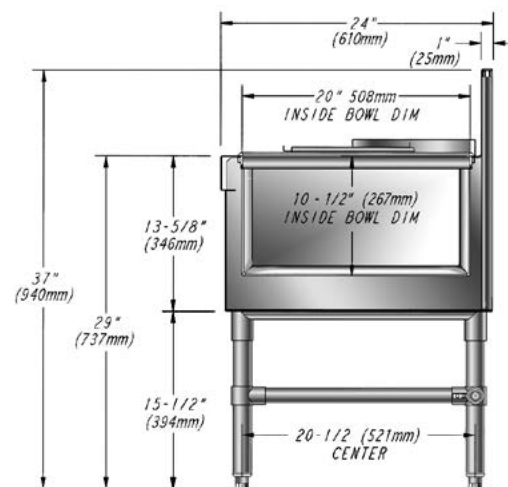
*The solid elegance of walnut, oak, cherry, maple, red oak, and mahogany bar panels.*

# What's The Difference Between Better And Best?

## 2200 Series Ice Chest



## OUR BEST Spec-Bar® Series Ice Chest



### components materials used in 2200 Series ice chest

Front	22 gauge, type 304
End panels	22 gauge, galvanized
Ice bin	20 gauge type 304 stainless steel, fabricated stainless steel, with fiberglass insulation breaker strip
Sliding lid	20 gauge, type 304
Backsplash	20 gauge, type 304 stainless steel
Back panel	22 gauge, galvanized
Exterior bottom	22 gauge, galvanized
Gussets	zinc plated
Legs	1 5/8" diameter, galvanized
Crossbraces steel	n/a
Feet	ABS plastic, adjustable

### materials used in Spec-Bar® ice chest

20 gauge, type 304
20 gauge, type 304
20 gauge type 304 fabricated stainless steel, with foamed-in-place insulation, polymer
20 gauge, type 304
20 gauge, type 304 stainless steel
18 gauge, galvanized
18 gauge, type 304 stainless steel
stainless steel
1 5/8" diameter, stainless steel
1 1/4" diameter, adjustable, type 304 stainless
stainless steel, adjustable

Either way, you can't go wrong. Whatever your underbar needs might be, Eagle will meet those needs. From ice chests to combination units to custom configurations, we deliver. One purchase order, one delivery truck, lower administrative costs equals more profit to your bottom line. Add proven durability and design integrity to the mix, plus recognized excellence in customer service, and you'll find that the logical choice for quality and cost savings always comes down to the Eagle Advantage®

**Profit From the Eagle Advantage®**



# ICE CHESTS



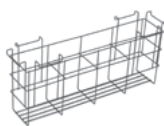
Standard

## STANDARD

Body, legs and crossbracing constructed of type 304 stainless steel for strength and corrosion resistance. Features include ice bins with foamed-in-place insulation for maximum efficiency, removable two-piece stainless steel cover for cleaning ease, stainless steel adjustable bullet feet, and non-metallic breaker strip prevents heat transfer to ice bin. Rectangle openings provided in backsplash for tubing. \*Replacement ice bin covers available, see Spec Sheet EG40.23 for models.

### OPTIONAL:

- 2-, 8-, or 10-circuit cold plate
- 14½" wide extra depth
- Speed rail
- Bottle rack



Wire rack is vinyl coated for rust resistance. Divider walls constructed of type 304 stainless steel to separate bottle chilling ice from ice to be consumed. Replacement stainless steel covers available.



single speed rail



## COMBINATION

Body, legs and crossbracing constructed of type 304 stainless steel for strength and corrosion resistance. Features include ice bin with foamed-in-place insulation for maximum efficiency, removable two-piece stainless steel cover for cleaning ease, stainless steel adjustable bullet feet and non-metallic breaker strip prevents heat transfer to ice bin. Bottle compartment and ice compartment have separate insulation and drains. Rectangle openings provided in backsplash for tubing. 8" backsplash. \*Replacement ice bin covers available, see Spec Sheet EG40.23 for models.

### OPTIONAL:

- 2-, 8-, or 10-circuit cold plate
- Extra depth
- Speed rail



single speed rail



combination ice chest



drop-in ice chest

## DROP-IN

Completely constructed of type 304 stainless steel for strength and corrosion resistance. Features include 72 or 121-lb. ice cube capacity, and ice bin with foamed-in-place insulation for maximum efficiency with removable two-piece stainless steel cover for cleaning ease included. \*Replacement ice bin covers available, see Spec Sheet EG40.23 for models.

### OPTIONAL:

- 2-, 8-, or 10-circuit cold plate

## PASS THRU

Body, legs and crossbracing constructed of type 304 stainless steel for strength and corrosion resistance. Features include stainless steel adjustable bullet feet, ice bin with foamed-in-place insulation for maximum efficiency, non-metallic breaker strip prevents heat transfer to ice bin and removable stainless steel cover for cleaning ease. \*Replacement ice bin covers available, see Spec Sheet EG40.23 for models.

### OPTIONAL:

- 2-, 8-, or 10-circuit cold plate • Speed rails



single speed rail



pass thru ice chest



## SINKS



hand sink



wet waste sink

### HAND SINKS

Features 20 gauge stainless steel 8" high backsplash, sides, front panel or door, and bowl. Leg channels, legs and crossbracing are 16 gauge stainless steel. Stainless steel adjustable bullet feet. Sink bowl is 9 $\frac{1}{4}$ " x 11 $\frac{1}{2}$ " x 6". Unit includes T&S faucet and 1 $\frac{1}{2}$ " stainless steel NPS threaded drain with nut and washer.

#### OPTIONAL:

- Removable stainless steel perforated strainer

### WALL MOUNTED SINKS

Backsplash, sides, bottom, front panel or door, and trim rail are 20 gauge stainless steel. 9 $\frac{1}{4}$ " x 11 $\frac{1}{2}$ " x 6" bowls are 16 gauge stainless steel. Wall mounting bracket and top drop-in model are 18 gauge stainless steel. Hot and cold water T&S gooseneck faucet. Also features stainless steel 1 $\frac{1}{2}$ " NPS threaded drain with nut and washer. Available as a handsink, wet waste sink, or deluxe hand sink with soap and c-fold paper towel dispenser. Also available as a drop-in sink.



wall mounted sink

### WET WASTE SINKS

Body and legs constructed of type 304 stainless steel for strength and corrosion resistance. Stainless steel adjustable bullet feet. Sink bowl is 9 $\frac{1}{4}$ " x 11 $\frac{1}{2}$ " x 6" deep with hot and cold water gooseneck faucet. Perforated stainless steel removable sink strainer. Available as a chemical storage cabinet with storage space for three one-gallon chemical containers or as a cabinet with trash chute. All units feature T&S faucets stainless steel NPS threaded drain with nut and washer.

### TWO-COMPARTMENT SINKS

Body, legs and crossbracing are constructed of type 304 stainless steel for strength and corrosion resistance. Stainless steel adjustable bullet feet. Sink bowl is 10" x 14" x 9 $\frac{1}{2}$ " deep with hot and cold faucet. 19" wide models have backsplash mounted T&S faucet; 24" wide models have deck mounted T&S faucet. Also features stainless steel 1 $\frac{1}{2}$ " NPS treaded drain with nut and washer.

#### OPTIONAL:

- Speed rail



single speed rail



three-compartment sink

### THREE-COMPARTMENT SINKS

Body, legs and crossbracing are constructed of type 304 stainless steel for strength and corrosion resistance. Stainless steel adjustable bullet feet. Sink compartments are 10" x 14" x 9 $\frac{1}{2}$ " with T&S hot and cold water faucet. 19" wide models have a backsplash mounted T&S faucet. Stainless steel workboard on one or both sides with independent drain. Workboards feature removable perforated stainless steel insert. Also features stainless steel 1 $\frac{1}{2}$ " NPS threaded drain with nut and washer.

#### OPTIONAL:

- Speed Rail



single speed rail



two-compartment sink

# SINKS

## FOUR-COMPARTMENT SINKS

Body, legs and crossbracing constructed of type 304 stainless steel for strength and corrosion resistance. Stainless steel adjustable bullet feet. Sink bowls are 10" x 14" x 9½" deep with hot and cold water faucet. 19" wide models have backsplash mounted T&S faucet. 24" wide models have deck mounted T&S faucet. Also features stainless steel 1½" NPS threaded drain with nut and washer. Workboards on either or both ends of sink have independent drains. Removable insert is perforated stainless steel.

### OPTIONAL:

- Speed rail



single speed rail



four-compartment sink



## WORKBOARDS

### STANDARD

Body, legs and crossbracing constructed of type 304 stainless steel for strength and corrosion resistance. Stainless steel adjustable bullet feet. Removable insert made of perforated stainless steel and stainless steel 1½" NPS threaded drain with nut and washer. All floor model workboards are 37" overall height.

### OPTIONAL:

- Tubing chase



standard



19" recessed workboard with single speed rail profile left and double speed rail right.

### RECESSED

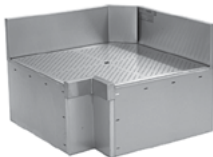
Body, legs and crossbracing constructed of type 304 stainless steel for strength and corrosion resistance. Stainless steel adjustable bullet feet. Removable insert and shelf made of perforated stainless steel and stainless steel 1½" NPS threaded drain with nut and washer. Designed to align with single or double speed rails installed on adjoining equipment.



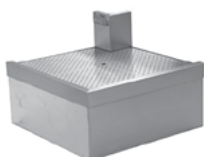
24" recessed workboard with no speed rail profile left and single speed rail right

### CORNER

Constructed of all type 304 stainless steel for strength and corrosion resistance. Includes removable stainless steel perforated insert and stainless steel 1½" NPS threaded drain with nut and washer. Mounting clips included. Legs and side available when corner workboard is not attached to other equipment.



inner corner



outer corner

### ANGLE

Constructed of all type 304 stainless steel for strength and corrosion resistance. Includes removable stainless steel perforated insert, mounting clips and stainless steel 1½" NPS threaded drain with nut and washer. Legs and side available when angle workboard is not attached to other equipment.



angle workboard

## WORKBOARDS



*workboard cabinet*



*filler board*

### WORKBOARD CABINETS

Body, legs and crossbracing constructed of type 304 stainless steel for strength and corrosion resistance. Stainless steel adjustable bullet feet, perforated stainless steel insert, and stainless steel 1½" NPS threaded drain with nut and washer. Cabinet has workboard surface with removable stainless insert. Available with or without doors.

### BEER DRAINERS

Body, legs and crossbracing constructed of type 304 stainless steel for strength and corrosion resistance. Stainless steel adjustable bullet feet, perforated stainless steel insert, and stainless steel 1½" NPS threaded drain with nut and washer. Tubing chase built into rear deck. Removable perforated stainless steel front insert.



*beer drainer*

### FILLER BOARDS

Body, legs and crossbracing constructed of type 304 stainless steel for strength and corrosion resistance. Stainless steel adjustable bullet feet, perforated stainless steel insert, and stainless steel 1½" NPS threaded drain with nut and washer. Work surface reinforced with channels.

#### OPTIONAL:

- Speed Rail



*single speed rail*

## BLENDER STATIONS

### WITH T&S FAUCET

Designed to align with the single speed rail on adjoining equipment. Body, legs and adjustable crossbracing constructed of type 304 stainless steel for strength and corrosion resistance. Stainless steel adjustable bullet feet. All units feature sink bowl with hot and cold water T&S gooseneck faucet. Sink bowl on all units is 9¼" x 11½" x 6" except #BS119, which features 9½" x 9½" x 6" sink bowl. 10" deep blender shelf – 9" on 14" lo models – with rear cord access hole. Lift-out stainless steel perforated sink strainer. 1 NPS drain. Full-length 8" high backsplash.



*blender station with T&S faucet*



*drainboard blender station*

### WET WASTE

Body, legs and crossbracing constructed of type 304 stainless steel for strength and corrosion resistance. Stainless steel adjustable bullet feet. 6" diameter round wet waste sink with T&S glass filler. 9¼" wide blender shelf with rear cord access hole. Designed to align with the single speed rail on adjoining equipment.



*wet waste blender station*

### DRAINBOARD

Body, legs and crossbracing constructed of type 304 stainless steel for strength and corrosion resistance. Stainless steel adjustable bullet feet. Drainboard includes lift-out stainless steel perforated insert. 9¼" deep blender shelf with rear cord access hole. 1½" NPS drain. Designed to align with the single speed rail on adjoining equipment.

## COCKTAIL STATIONS



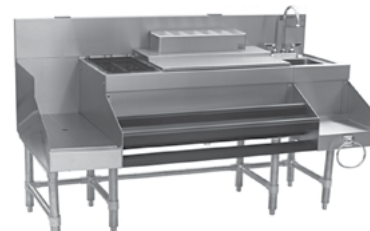
*cocktail station*

### COCKTAIL STATIONS

Two bowl sink has T&S gooseneck faucet. Standard overshelf with removable perforated inserts. Blender shelf, two deep sinks, ice bin, tubing chase, work surface and double speed rail are standard. 1½" NPS drain for sink bowls. ½" x 4" drain for ice bin. Drains available on optional overshelves. 8-circuit post-mix cold plate included. Front and end panels are stone gray plastic laminate over wood core. Other colors available.

#### OPTIONAL:

- Double overshelf
- Overshelf drain
- Other laminates



*combination cocktail station*

### COMBINATION COCKTAIL STATIONS

Body, legs and crossbracing constructed of type 304 stainless steel for strength and corrosion resistance. Blender station, wet waste sink, double speed rail, dry waste chute, condiment dispenser, combination ice chest and tubing access holes are standard. 1½" NPS drain. Liquor display and recessed workboard available on some models.

#### OPTIONAL:

- 8-circuit cold plate
- 10-circuit cold plate

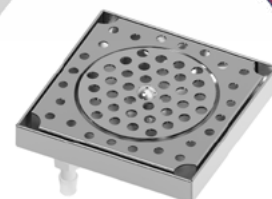
## GLASS RINSERS

### SPEC-BAR® GLASS RINSERS

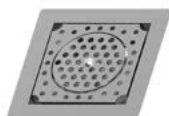
Every bartender wants a perfect pour. By rinsing the glass before pouring, you rinse away any impurities and condition the glass for that perfect pour. Eagle's NEW Drop-In Glass Rinser Troughs are easy to use: Turn a glass upside-down, place it on the glass rinser, and push down to activate it. It's that easy! Sits flush with the countertop! Cover is removable for ease of cleaning. Choose from four models ranging from six inches to 24 inches in length.



*underbar  
glass rinser*



*bar top  
glass rinser*



*#DIGRT-6*



*#DIGRT-18*

### SPEC-BAR® DROP-IN GLASS RINSER TROUGHS

Every bartender wants a perfect pour. By rinsing the glass before pouring, you rinse away any impurities and condition the glass for that perfect pour. Eagle's NEW Drop-In Glass Rinser Troughs are easy to use: Turn a glass upside-down, place it on the glass rinser, and push down to activate it. It's that easy! Sits flush with the countertop! Cover is removable for ease of cleaning. Choose from four models ranging from six inches to 24 inches in length.



# PORTABLE BARS

## SPEC-BAR® PORTABLE BARS WITH WORKBOARD



*SPEC-BAR® Portable Bar*



*available with lift-up  
end countertops*

SPEC-BAR® Portable Bar combines Eagle Group's most popular back bar equipment with a rugged stainless steel tubular frame to create a compact and capable mobile workstation. The 48" workboard, large ice bin, full length double speed rail make this workstation a workhorse. Welded 1-1/2" type 300 stainless steel square tubular base construction. 80" length, 32" wide, 48" high with 34" work height. Fully mobile - standard 4" poly tread casters with brake. Ice bin is 15" x 19" x 8", with 1-1/2" drain. Workboard is 48" with 1-1/2" drain. Speed rail is full length. Storage for four (4) 20" x 20" x 4" glass racks. Ice chest and workboard plumbed independently.



## PORTABLE BARS

### SPEC-BAR® PORTABLE BARS WITH DOUBLE ICE BINS



*SPEC-BAR® Portable Bar*

SPEC-BAR® Portable Bar combines Eagle Group's most popular back bar equipment with a rugged stainless steel tubular frame to create a compact and capable mobile workstation. The double ice bins, dump sink, and full length speed rail will have your bartenders serving drinks from both barrels. Welded 1-1/2" type 300 stainless steel square tubular base construction. 80" length, 32" wide, 48" high with 34" work height. Fully mobile - standard 4" poly tread casters with brake. Double ice bins measure 15" x 21" x 8" with 1-1/2" drain. Single 10" x 12" dump sink with perforated insert and 1-1/2" drain. Double speedrail measures 72". Storage for four (4) 20" x 20" x 4" glass racks. Ice bins and dump sink plumbed independently.



*available with lift-up end countertops*

### SPEC-BAR® PORTABLE BARS



*model with lift-up stainless steel countertops shown with optional solid surface bar top*

SPEC-BAR® Portable Bar combines Eagle Group's most popular back bar equipment with a rugged stainless steel tubular frame to create a compact and capable mobile workstation. The five-step liquor display and double speed rail provide ample storage. The blender station features a workboard with wet waste drain and blender shelf. The combination ice chest provides separate insulated bottle and ice bin. Welded 1-1/2" type 300 stainless steel square tubular base construction. 80" length, 33" wide, 48" high with 34" work height. Fully mobile - standard 4" poly tread casters with brake. 12"-wide five-step liquor display with stainless and ABS construction with snap-on label cover. 12"-wide blender station with sink, workboard, wet waste drain, and blender shelf. 48" combination ice chest with separate insulated bottle and ice bin, double speed rail, and sliding cover. Storage for four (4) 20" x 20" x 4" glass racks. Bottle bin, ice bin, and workboard plumbed independently.

## STORAGE & ACCESSORIES



*liquor displays*

### LIQUOR DISPLAYS

Body, legs and crossbracing constructed of type 304 stainless steel for strength and corrosion resistance. Open step-and-rail design covered with ABS for sound deadening. Four or five levels of liquor storage available. Each level has retaining front rail. Designed to align with speed rails installed on adjoining equipment.

**OPTIONAL:** Locking covers



*glass rack storage units*

### GLASS RACK STORAGE UNITS

Body and legs constructed of type 304 stainless steel. Stainless steel adjustable bullet feet. GR Series units hold three glass racks; WBGR Series hold two racks. Removable clips and pilasters included. Recessed workboard top with removable perforated stainless insert available. 24" wide models hold 20" x 20" racks. 18" wide models hold 16" x 16" round racks. Full bottom shelf with 1½" NPS drain.

**OPTIONAL:** Locking covers



*beverage dispensers*

### BEVERAGE DISPENSERS

Tarnish-free solid brass or stainless steel construction. Drain pan with lift-out perforated insert for cleaning ease. Available with four- or five-faucet configurations, more available on special orders. Stainless steel undercounter models available.

**OPTIONAL:** Cooling block

### SODA GUN HOLDERS



A must for any bar or restaurant environment, Eagle's NEW Spec-Bar® Soda Gun Holders are made for popular soda guns such as by Wunder-Bar® and Schroeder America™. Holds soda guns securely in place. No need for legs and feet, these attach to the side of adjacent Eagle underbar equipment, allowing for more floor space. 20 feet of inclusive vinyl tubing allows for customizing the length to your need and/or preference. Choose from two available models, depending on the front-to-back dimension of your pre-existing Eagle underbar equipment.



*soda gun*



*single speed rail*



*double speed rail*

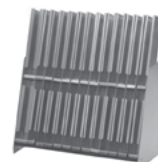
### PERMANENT SPEED RAILS AND LOCKING COVERS

All type 304 stainless steel construction. Designed with ABS sound deadening cover. Locking covers available in any length up to 84" .

### MINI BOTTLE RACKS

Type 304 stainless steel construction. Countertop and underbar models available.

**OPTIONAL:** Locking covers



*countertop mini bottle rack*

# NEW PRODUCTS



*sink with glass rinser  
and dipper well*

## DUMP SINK WITH GLASS RINSER

Take a glass, turn it upside-down, place it on the glass rinser, and push down to activate it. It's that easy! Powerful water jets rinse in seconds. Applicable to any drinkware—from narrow champagne flutes to wine glasses—it reaches where you can't, and takes far less time than soaking and scrubbing. Also featured are sink bowl with 1½" stainless steel IPS drain, faucet mounted to a 9"-tall backsplash, and stainless steel legs and crossbracing. Drainboard is removable for ease of cleaning. Choose from two models: 12"-wide unit with glass rinser, and 18"-wide unit with rinser and dipper well! The dipper well features its own deck-mount faucet and 1½" stainless steel IPS drain.



*#MIC1425*

## MOBILE ICE CADDIES

Ideal for any place which serves ice cold beverages, from restaurants and bars to indoor and outdoor venues in which portability is a must, Eagle's NEW Mobile Ice Caddies will meet your needs! Stainless steel construction is durable as well as attractive. The 29" height allows for these caddies to easily fit underneath a standard-height bar or countertop. Hefty 5" casters, two with brake, allow for easy mobility. Insulated high-capacity ice bin will keep your drinks on ice for hours. Bottom pan slopes to a 1" NPS drain with ball valve. Top and body are heavy gauge stainless steel. Ice storage bin is type 304 stainless steel, fully insulated, isolated from exterior with thermoplastic plastic breaker strips, 19" front-to-back and 18" deep, with pan sloped to a 1" NPS drain connection with ball valve, lift-off sliding cover and 5"-diameter casters—two with brakes.

## SLOPED MOBILE ICE CADDIES

Ideal for any place which serves ice cold beverages, from restaurants and bars to indoor and outdoor venues in which portability is a must, Eagle's NEW Sloped Mobile Ice Caddies will meet your needs! Stainless steel construction is durable as well as attractive. Hefty 5" casters, two with brake, allow for easy mobility. Insulated high-capacity ice bin will keep your operation stocked with ice for hours. Bottom pan slopes to a 1" NPS drain with ball valve. Top and body are heavy gauge stainless steel. Ice storage bin is type 304 stainless steel, fully insulated, isolated from exterior with thermoplastic plastic breaker strips, 19" front-to-back and 17" deep, with pan sloped to a 1" NPS drain connection with ball valve, hinged lift-off cover and 5"-diameter casters—two with brakes.



*#SLMIC2430*

## WALL MOUNTED BOTTLE FILLER STATIONS

Fully enclosed apron constructed of 300 series stainless steel. Tamper-resistant hardware on access panel. Hands-free electronic-eye faucet with battery back-up. Single- or double-faucet units feature a replaceable 15,000 gallon water filtration kit with NSF 42 and 53 listing. Single-filler faucet units measure 12" x 12" x 24" overall (12" x 28" x 24" double). 4-1/2" x 8" drain trough per fill faucet, with anti-splash cover; wire and custom versions available...consult factory.



*#BF-1-12  
single unit*

Eagle Group  
100 Industrial Blvd.  
Clayton, DE 19938  
Toll Free: 1-800-441-8440  
Fax: 302-653-2065  
www.eaglegrp.com

**EAGLE**  
GROUP  
Profit from the Eagle Advantage®

©2024 Eagle Group. Although every attempt has been made to ensure the accuracy of data in this publication, we cannot be responsible for printing or typographical errors or omissions.

EG7008 Rev.05/25