

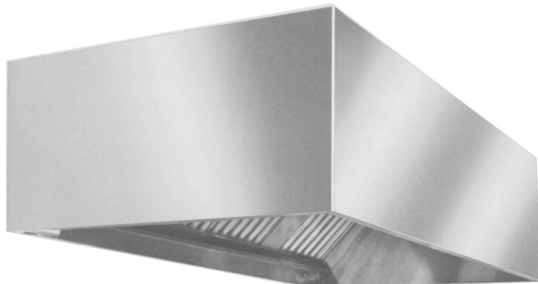


Profit from the Eagle Advantage®

Specification Sheet

Short Form Specifications

Eagle SPEC AIR® (Regular, Short Front) Ventilation Hood, model _____. Exposed surfaces to be heavy gauge type 430 stainless steel. Constructed per NFPA 96 with all seams welded liquid tight. Furnished with full length stainless steel grease trough; grease container; UL classified aluminum removable filters; UL vapor-proof incandescent light fixture; 3" air space at rear, front and rear hanger brackets; and exhaust collars.



regular exhaust-only hood
model #HEB96-66



exhaust-only hood with short front fascia
model #HES96-66 (for low ceiling applications)

Options / Accessories

- 3" (76mm) air space on left end
- 3" (76mm) air space on right end
- Insulated back
- Insulated end(s)
- S/S furring channel
- S/S trim strips
- S/S end panel
- S/S wall panel
- Hood-mounted light switch
- Extra exhaust collar
- Extra vapor-proof light
- Spare grease filters
- Spare grease cups

EAGLE GROUP
100 Industrial Boulevard, Clayton, DE 19938-8903 USA
Phone: 302-653-3000 • Fax: 302-653-2065
www.eaglegrp.com

Foodservice Division: Phone 800-441-8440
MHC/Retail Display Divisions: Phone 800-637-5100

For custom configuration or fabrication needs, contact our **SpecFAB® Division**.
Phone: 302-653-3000 • Fax: 302-653-2065 • e-mail: quotes@eaglegrp.com

Spec sheets available for viewing, printing or downloading from our online literature library at www.eaglegrp.com

Eagle Foodservice Equipment, Eagle MHC, SpecFAB®, and Retail Display are divisions of Eagle Group. ©2018 by the Eagle Group

Item No.: _____
 Project No.: _____
 S.I.S. No.: _____

SPEC AIR® Ventilation Hoods— Exhaust-Only Models

MODELS:

- | | | | |
|-----------------------------------|------------------------------------|-----------------------------------|------------------------------------|
| <input type="checkbox"/> HEB96-48 | <input type="checkbox"/> HEB96-102 | <input type="checkbox"/> HES96-48 | <input type="checkbox"/> HES96-102 |
| <input type="checkbox"/> HEB96-54 | <input type="checkbox"/> HEB96-108 | <input type="checkbox"/> HES96-54 | <input type="checkbox"/> HES96-108 |
| <input type="checkbox"/> HEB96-60 | <input type="checkbox"/> HEB96-114 | <input type="checkbox"/> HES96-60 | <input type="checkbox"/> HES96-114 |
| <input type="checkbox"/> HEB96-66 | <input type="checkbox"/> HEB96-120 | <input type="checkbox"/> HES96-66 | <input type="checkbox"/> HES96-120 |
| <input type="checkbox"/> HEB96-72 | <input type="checkbox"/> HEB96-126 | <input type="checkbox"/> HES96-72 | <input type="checkbox"/> HES96-126 |
| <input type="checkbox"/> HEB96-78 | <input type="checkbox"/> HEB96-132 | <input type="checkbox"/> HES96-78 | <input type="checkbox"/> HES96-132 |
| <input type="checkbox"/> HEB96-84 | <input type="checkbox"/> HEB96-138 | <input type="checkbox"/> HES96-84 | <input type="checkbox"/> HES96-138 |
| <input type="checkbox"/> HEB96-90 | <input type="checkbox"/> HEB96-144 | <input type="checkbox"/> HES96-90 | <input type="checkbox"/> HES96-144 |
| <input type="checkbox"/> HEB96-96 | | <input type="checkbox"/> HES96-96 | |

Design and Construction Features*

- For use in commercial cooking such as restaurants, kitchens, fast food and deli.
- Exhaust-only vent hoods are designed for use where make-up air is supplied by other vent systems.
- Regular HEB Series and short front HES Series models (for low ceilings) are available.
- All models are 51" (1295mm) front-to-back and 24" (610mm) high.
- Heavy gauge type 430 stainless steel hood surfaces.
- Seams on the canopy are continuously liquid-tight.
- U.L.-listed vapor-proof incandescent light fixtures.
- U.L.-classified aluminum filters removable for easy cleaning.
- Full-length grease trough.
- Removable grease container.
- Exhaust collars.
- 3" (76mm) air space at rear.
- Front and rear hanging brackets.
- Regular and short front models.

* Models do not include installation supplies and materials, hanging of ventilator, exhaust and supply fans, curbs, ductwork, transitions, penetrating and sealing of roof or ceiling, trim, flashing, permits, fire protection system or tests, air balancing, electrical of any nature or any special requirements from local authorities.

Certifications / Approvals



NFPA-96



AutoQuotes



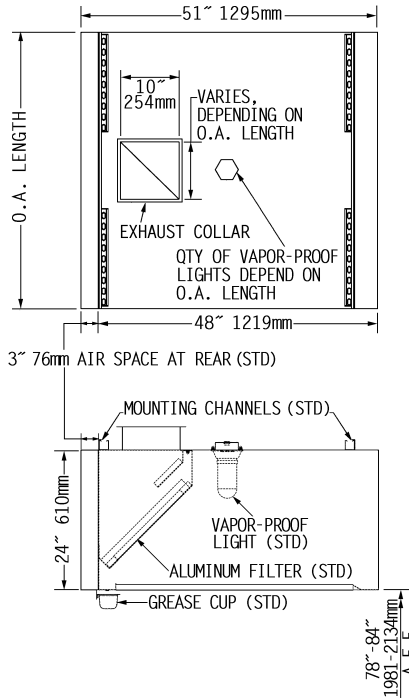


Profit from the Eagle Advantage®

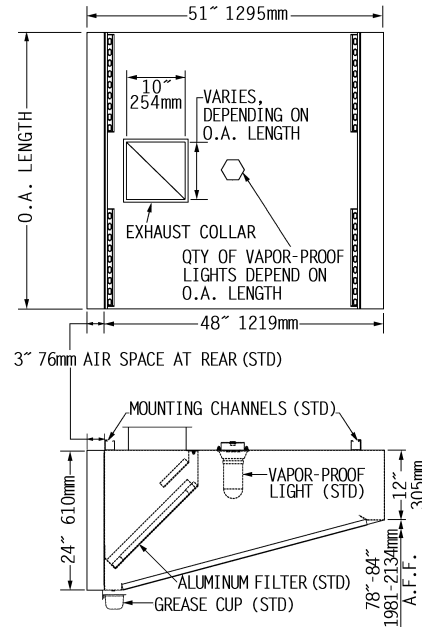
Item No.: _____
 Project No.: _____
 S.I.S. No.: _____

SPEC AIR® Ventilation Hoods—Exhaust-Only Models

HEB Series — Regular Hoods



HES Series — Short Front Hoods



REGULAR model #	SHORT FRONT model #	length		weight		1800 FPM Exhaust CFM	exhaust collar size at 0.65" (17mm) S.P. width		number of exhaust collars	number of lights per hood	number of filters per hood		
		in.	mm	lbs.	kg		in.	mm				in.	mm
HEB96-48	HES96-48	48"	1219	275	124.7	1600	10"	254	12 3/4"	324	1	1	2
HEB96-54	HES96-54	54"	1372	309	140.2	1800	10"	254	14 1/2"	368	1	1	2
HEB96-60	HES96-60	60"	1524	344	156.0	2000	10"	254	16"	406	1	2	2
HEB96-66	HES96-66	66"	1676	378	171.5	2200	10"	254	17 1/2"	445	1	2	3
HEB96-72	HES96-72	72"	1829	412	186.9	2400	10"	254	19"	483	1	2	3
HEB96-78	HES96-78	78"	1981	481	218.2	2600	10"	254	20 3/4"	527	1	2	3
HEB96-84	HES96-84	84"	2134	550	249.5	2800	10"	254	22 1/2"	572	1	3	3
HEB96-90	HES96-90	90"	2286	567	257.2	3000	10"	254	24"	610	1	3	4
HEB96-96	HES96-96	96"	2438	584	264.9	3200	10"	254	25 1/2"	648	1	3	4
HEB96-102	HES96-102	102"	2591	601	272.6	3400	10"	254	27"	686	1	3	4
HEB96-108	HES96-108	108"	2743	618	280.3	3600	10"	254	29"	737	1	3	5
HEB96-114	HES96-114	114"	2896	653	296.2	3800	10"	254	30"	762	1	3	5
HEB96-120	HES96-120	120"	3048	687	311.6	4000	10"	254	16"	406	2	4	5
HEB96-126	HES96-126	126"	3200	721	327.0	4200	10"	254	16 1/2"	419	2	4	6
HEB96-132	HES96-132	132"	3353	756	342.9	4400	10"	254	17 1/2"	445	2	4	6
HEB96-138	HES96-138	138"	3505	790	358.3	4600	10"	254	18 1/2"	470	2	4	6
HEB96-144	HES96-144	144"	3658	825	374.2	4800	10"	254	19"	483	2	4	6

EAGLE GROUP
 100 Industrial Boulevard, Clayton, DE 19938-8903 USA
 Phone: 302-653-3000 • Fax: 302-653-2065
 www.eaglegrp.com

Foodservice Division: Phone 800-441-8440
 MHC/Retail Display Divisions: Phone 800-637-5100

Printed in U.S.A.
 ©2018 by Eagle Group

Rev. 04/18

Spec sheets available for viewing, printing or downloading from our online literature library at www.eaglegrp.com

Although every attempt has been made to ensure the accuracy of the information provided, we cannot be held responsible for typographical or printing errors. Information and specifications are subject to change without notice. Please confirm at time of order.