



Profit from the Eagle Advantage®

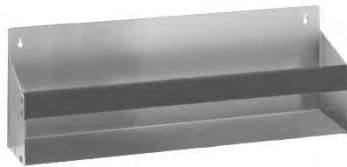
# Specification Sheet

## Short Form Specifications

Eagle Spec-Bar® Removable Single Speed Rail, model \_\_\_\_\_. Heavy gauge type 304 stainless steel construction with ABS for sound deadening. Available in keyhole style or hanging style.



*hanging speed rail*



*keyhole speed rail*

Item No.:	_____
Project No.:	_____
S.I.S. No.:	_____

## Spec-Bar® Removable Single Speed Rails

### MODELS:

- |                                 |                                 |
|---------------------------------|---------------------------------|
| <input type="checkbox"/> KSR-12 | <input type="checkbox"/> HSR-12 |
| <input type="checkbox"/> KSR-18 | <input type="checkbox"/> HSR-18 |
| <input type="checkbox"/> KSR-24 | <input type="checkbox"/> HSR-24 |
| <input type="checkbox"/> KSR-30 | <input type="checkbox"/> HSR-30 |
| <input type="checkbox"/> KSR-36 | <input type="checkbox"/> HSR-36 |

### Design and Construction Features

- Type 304 stainless steel construction for strength and corrosion resistance.
- Bottom and front are 20 gauge stainless steel.
- Sides are 14 gauge stainless steel.
- Designed with ABS sound deadening covers to soften sound.
- Add to existing Spec-Bar® speed rails and vertical surfaces with two types of speed rails available.
- Increase brand recognition by storing bottles in these easy-to-clean speed rails.

**EAGLE GROUP**  
100 Industrial Boulevard, Clayton, DE 19938-8903 USA  
Phone: 302-653-3000 • Fax: 302-653-2065  
www.eaglegrp.com

**Foodservice Division: Phone 800-441-8440**  
**MHC/Retail Display Divisions: Phone 800-637-5100**

For custom configuration or fabrication needs, contact our **SpecFAB® Division**.  
Phone: 302-653-3000 • Fax: 302-653-3091 • e-mail: specfab@eaglegrp.com



EG40.51 Rev. 04/11

**Spec sheets available for viewing, printing or downloading from our online literature library at [www.eaglegrp.com](http://www.eaglegrp.com)**

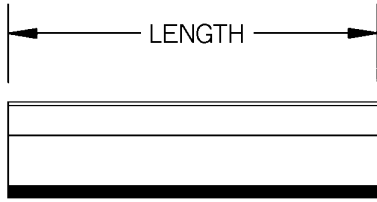
*Eagle Foodservice Equipment, Eagle MHC, SpecFAB®, and Retail Display are divisions of Eagle Group. ©2011 by the Eagle Group*



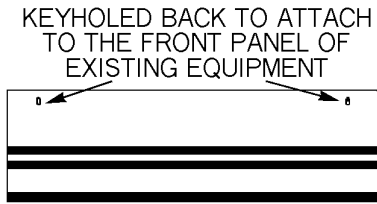
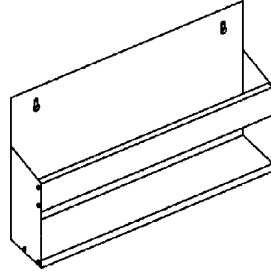
Item No.: \_\_\_\_\_  
 Project No.: \_\_\_\_\_  
 S.I.S. No.: \_\_\_\_\_

# Spec-Bar® Removable Single Speed Rails

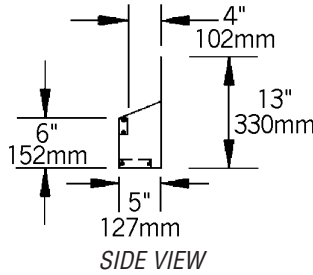
Keyhole Speed Rails – for attaching onto existing equipment



TOP VIEW

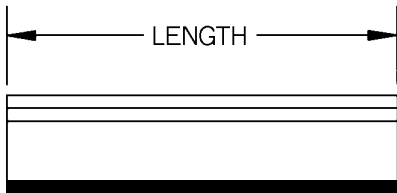


FRONT VIEW

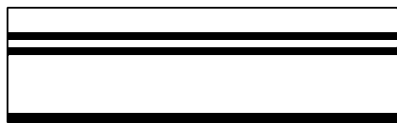
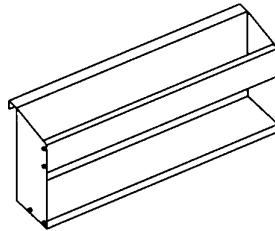


model #	width		length		weight	
	in.	mm	in.	mm	lbs.	kg
<b>KSR-12</b>	5"	127	12"	305	4	1.8
<b>KSR-18</b>	5"	127	18"	457	6	2.7
<b>KSR-24</b>	5"	127	24"	610	7	3.2
<b>KSR-30</b>	5"	127	30"	762	10	3.5
<b>KSR-36</b>	5"	127	36"	914	12	5.4

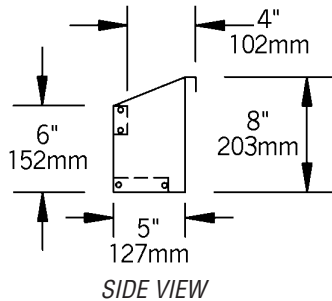
# Hanging Speed Rails – for clipping onto existing single speedrails



TOP VIEW



FRONT VIEW



model #	width		length		weight	
	in.	mm	in.	mm	lbs.	kg
<b>HSR-12</b>	5"	127	12"	305	4	1.8
<b>HSR-18</b>	5"	127	18"	457	6	2.7
<b>HSR-24</b>	5"	127	24"	610	7	3.2
<b>HSR-30</b>	5"	127	30"	762	10	3.5
<b>HSR-36</b>	5"	127	36"	914	12	5.4

**EAGLE GROUP**  
 100 Industrial Boulevard, Clayton, DE 19938-8903 USA  
 Phone: 302-653-3000 • Fax: 302-653-2065  
 www.eaglegrp.com

Foodservice Division: Phone 800-441-8440  
 MHC/Retail Display Divisions: Phone 800-637-5100

Printed in U.S.A.  
 ©2011 by Eagle Group

Rev. 04/11

Spec sheets available for viewing, printing or downloading from our online literature library at [www.eaglegrp.com](http://www.eaglegrp.com)

Although every attempt has been made to ensure the accuracy of the information provided, we cannot be held responsible for typographical or printing errors. Information and specifications are subject to change without notice. Please confirm at time of order.