



Profit from the Eagle Advantage®

Specification Sheet

Short Form Specifications

Eagle 2200 Series Cocktail Workstation, model _____. Top, front, backsplash, and ice bin to be heavy gauge type 304 stainless steel. Fabricated ice bin is 8" deep, fully insulated, with 1½" drain. Unit furnished with stainless steel speed rail. Work board section to have 1½" drain in top. 1½" galvanized tubular legs with adjustable bullet feet.

Eagle 2200 Series Cocktail Workstation with Sealed-In Cold Plate, model _____. Top, front, backsplash, and ice bin to be heavy gauge type 304 stainless steel. Fabricated ice bin is 8" deep, fully insulated, with sealed-in 7-circuit cold plate and 1½" drain. 1½" O.D. galvanized tubular legs with adjustable bullet feet.



#CWS4-22R cocktail workstation

Options / Accessories

- Stainless steel leg kits
- Additional speed rail

EAGLE GROUP
100 Industrial Boulevard, Clayton, DE 19938-8903 USA
Phone: 302-653-3000 • Fax: 302-653-2065
www.eaglegrp.com

Foodservice Division: Phone 800-441-8440
MHC/Retail Display Divisions: Phone 800-637-5100

For custom configuration or fabrication needs, contact our **SpecFAB® Division**.
Phone: 302-653-3000 • Fax: 302-653-3091 • e-mail: specfab@eaglegrp.com

Item No.:	_____
Project No.:	_____
S.I.S. No.:	_____

2200 Series Cocktail Workstations

MODELS:

- CWS4-22R
- CWS4-22L
- CWS5-22R
- CWS5-22L
- CWS4-22R-7
- CWS4-22L-7
- CWS5-22R-7
- CWS5-22L-7

Design and Construction Features

- New bullnose front edge.
- All type 304 stainless steel work surface.
- Fabricated ice bin is insulated, 8" (203mm) deep, 75-lb. (34 kg) ice capacity, and can be located either on left or right end of unit.
- End panels are stainless steel type 430. Back and bottom are galvanized.
- 24" (610mm) stainless steel speed rail.
- Leg fixtures are welded in place.
- Non-marking plastic bullet feet.
- 1½" (38mm) NPT drain with 1½" x 4" (38 x 102mm) tailpiece.



AUTOQUOTES



EG40.10 Rev. 08/11

Spec sheets available for viewing, printing or downloading from our online literature library at www.eaglegrp.com

Eagle Foodservice Equipment, Eagle MHC, SpecFAB®, and Retail Display are divisions of Eagle Group. ©2011 by the Eagle Group

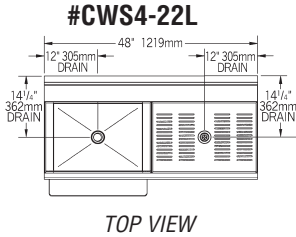


Profit from the Eagle Advantage®

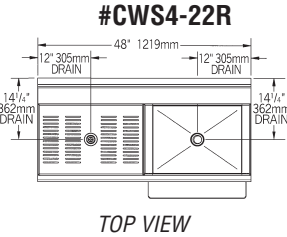
Item No.: _____
 Project No.: _____
 S.I.S. No.: _____

2200 Series Cocktail Workstations

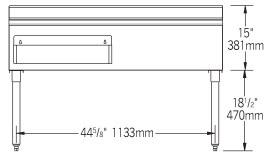
4 (1219mm) Models



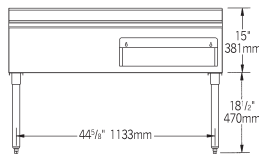
TOP VIEW



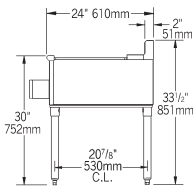
TOP VIEW



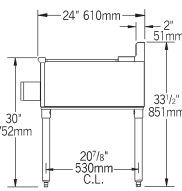
FRONT VIEW



FRONT VIEW

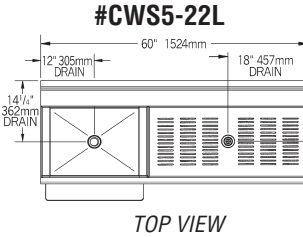


SIDE VIEW

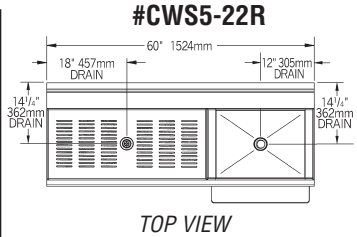


SIDE VIEW

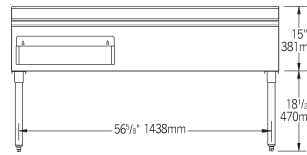
5 (1524mm) Models



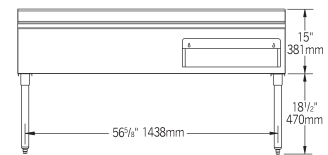
TOP VIEW



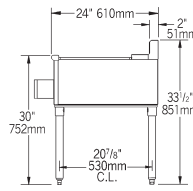
TOP VIEW



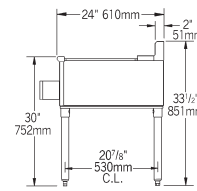
FRONT VIEW



FRONT VIEW



SIDE VIEW



SIDE VIEW

model #	width	length	weight
	in. mm	in. mm	lbs. kg
CWS4-22R	24" 610	48" 1219	65 29.5
CWS4-22L	24" 610	48" 1219	65 29.5

UNITS WITH COLD PLATE

CWS4-22R-7	24" 610	48" 1219	95 43.1
CWS4-22L-7	24" 610	48" 1219	95 43.1

model #	width	length	weight
	in. mm	in. mm	lbs. kg
CWS5-22R	24" 610	60" 1524	75 34.0
CWS5-22L	24" 610	60" 1524	75 34.0

UNITS WITH COLD PLATE

CWS5-22R-7	24" 610	60" 1524	105 47.6
CWS5-22L-7	24" 610	60" 1524	105 47.6

Optional Stainless Steel Leg Kits

add suffix #	description
-SL	stainless steel leg assemblies
-SLF	stainless steel leg assemblies & stainless steel feet
-SLG	stainless steel leg assemblies & stainless steel gussets
-SLGF	stainless steel leg assemblies, stainless steel feet & gussets

EAGLE GROUP
 100 Industrial Boulevard, Clayton, DE 19938-8903 USA
 Phone: 302-653-3000 • Fax: 302-653-2065
 www.eaglegrp.com

Foodservice Division: Phone 800-441-8440
 MHC/Retail Display Divisions: Phone 800-637-5100

Printed in U.S.A.
 ©2011 by Eagle Group
 Rev. 08/11

Spec sheets available for viewing, printing or downloading from our online literature library at www.eaglegrp.com

Although every attempt has been made to ensure the accuracy of the information provided, we cannot be held responsible for typographical or printing errors. Information and specifications are subject to change without notice. Please confirm at time of order.