

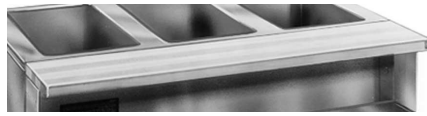


Profit from the Eagle Advantage®

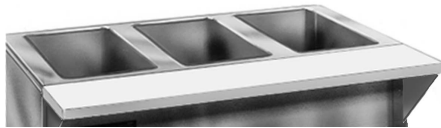
Specification Sheet



thermoplastic cutting board replacement



hardwood cutting board



Richlite® heat-resistant cutting board



buffet shelf

Richlite® Heat-Resistant Cutting Boards

- 8" (203mm) wide, 1/2" (13mm) thick.
- High heat-resistant up to 360°F.
- 18 gauge stainless steel mounting brackets.

model #	for model	length		weight	
		in.	mm	lbs.	kg
RLB-2	HT2	33"	838	36	16.3
RLB-3	HT3	48"	1219	49	22.2
RLB-4	HT4	63 1/2"	1613	66	29.9
RLB-5	HT5	79"	2007	79	35.8
RLB-6	HT6	94 1/2"	2400	97	44.0

Buffet Shelves

- 15" (381mm)-wide, 18 gauge stainless steel shelf located 20" (508mm) above surface.
- Offered with clear polycarbonate sneeze guard on one or both sides, with or without infrared bullet lamps.

...with Sneeze Guard on One Side...						...with Sneeze Guard on Both Sides...						
25 5/8" (651mm) overall front-to-back						36 1/4" (921mm) overall front-to-back						
...without infrared bullet lamps			...with infrared bullet lamps			...without infrared bullet lamps			...with infrared bullet lamps			
length		weight		model #	weight	length		weight		model #	weight	
in.	mm	lbs.	kg			in.	mm	lbs.	kg		in.	mm
33"	838	27	12.2	BS1-HT2	45	20.4	40	18.1	BS2-HT2	46	20.9	BS2-HT2-IL
48"	1219	38	17.2	BS1-HT3	60	27.2	70	31.8	BS2-HT3	76	34.5	BS2-HT3-IL
63 1/2"	1613	58	26.3	BS1-HT4	76	34.5	78	35.4	BS2-HT4	84	38.1	BS2-HT4-IL
79"	2007	83	37.6	BS1-HT5	114	51.7	93	42.2	BS2-HT5	116	52.6	BS2-HT5-IL
94 1/2"	2400	104	47.2	BS1-HT6	135	61.2	114	51.7	BS2-HT6	132	59.9	BS2-HT6-IL

EAGLE GROUP

100 Industrial Boulevard, Clayton, DE 19938-8903 USA
 Phone: 302-653-3000 • 800-441-8440 • Fax: 302-653-2065
 www.eaglegrp.com
 www.eaglegrpnews.com
 www.eaglehmc.com

For custom configuration or fabrication needs, contact our SpecFAB® Division.
 Phone: 302-653-3000 • Fax: 302-653-2065 • e-mail: quotes@eaglegrp.com



EG30.20A Rev. 10/22

Spec sheets available for viewing, printing or downloading from our online literature library at our websites

Eagle Foodservice Equipment, Eagle MHC, and SpecFAB® are divisions of Eagle Group. ©2022 by the Eagle Group

Item No.: _____
 Project No.: _____
 S.I.S. No.: _____

Hot Food Table Accessories— Cutting Boards, Shelves

MODELS:

- | | | | |
|---------------------------------|---------------------------------|--------------------------------|----------------------------------|
| <input type="checkbox"/> 353996 | <input type="checkbox"/> 353985 | <input type="checkbox"/> WB-* | <input type="checkbox"/> SSP-* |
| <input type="checkbox"/> 353997 | <input type="checkbox"/> 353986 | <input type="checkbox"/> RLB-* | <input type="checkbox"/> DSSP-* |
| <input type="checkbox"/> 353998 | <input type="checkbox"/> 353987 | <input type="checkbox"/> TS-* | <input type="checkbox"/> BS1-HT* |
| <input type="checkbox"/> 388075 | <input type="checkbox"/> 353988 | <input type="checkbox"/> TSL-* | <input type="checkbox"/> BS2-HT* |
| <input type="checkbox"/> 354066 | <input type="checkbox"/> 355196 | <input type="checkbox"/> SS-* | |

* See charts for full model numbers.

Thermoplastic Cutting Board Replacements

- 8" (203mm) wide, 1/2" (13mm) thick.
- Polyethylene material.

model #	for model	length		weight	
		in.	mm	lbs.	kg
353996	HT2	33"	838	12	5.4
353997	HT3	48"	1219	17	7.7
353998	HT4	63 1/2"	1613	23	10.4
388075	HT5	79"	2007	30	13.6
354066	HT6	94 1/2"	2400	37	16.8

Hardwood Cutting Boards

- 8" (203mm) wide, 1 1/4" (32mm) thick.
- Laminated hardwood cutting board.
- Available on stationary stainless steel or chrome-plated drop brackets.

with Stationary Brackets		with Drop Brackets		length		weight	
model #	for model	model #	for model	in.	mm	lbs.	kg
WB-HT2	HT2	WB-DB-HT2	HT2	33"	838	14	6.3
WB-HT3	HT3	WB-DB-HT3	HT3	48"	1219	18	8.2
WB-HT4	HT4	WB-DB-HT4	HT4	63 1/2"	1613	21	9.5
WB-HT5	HT5	WB-DB-HT5	HT5	79"	2007	28	12.7
WB-HT6	HT6	WB-DB-HT6	HT6	94 1/2"	2400	31	14.1



Profit from the Eagle Advantage®

Item No.: _____
 Project No.: _____
 S.I.S. No.: _____

Hot Food Table Accessories



serving shelf

Serving Shelves

- 18 gauge stainless steel serving shelf.
- Serving height is 13½" (343mm).
- ¼" (6mm) clear Acrylite® front panel or open front available.

...with Open Front		...with Acrylite® Front Panel		length		weight	
10" (254mm) wide	18" (457mm) wide	10" (254mm) wide	18" (457mm) wide	in.	mm	lbs.	kg
model #	model #	model #	model #				
SS-HT2	SSP-HT2	SS-HT2	SSP-HT2	33"	838	45	20.4
SS-HT3	SSP-HT3	SS-HT3	SSP-HT3	48"	1219	54	24.5
SS-HT4	SSP-HT4	SS-HT4	SSP-HT4	63½"	1613	63	28.6
SS-HT5	SSP-HT5	SS-HT5	SSP-HT5	79"	2007	70	31.8
SS-HT6	SSP-HT6	SS-HT6	SSP-HT6	94½"	2400	76	34.5

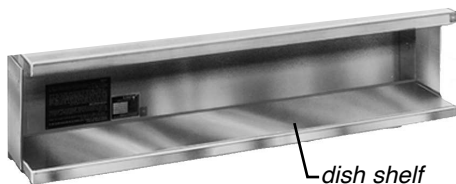


deluxe serving shelf

Deluxe Serving Shelves

- 14½" (368mm)-wide, 18 gauge stainless steel serving shelf.
- Front sloped back to allow better view of product.
- Stainless steel end panel assemblies.
- ¼" (6mm) clear Acrylite® at front and ends.

model #	for model	length		weight	
		in.	mm	lbs.	kg
DSSP-HT2	HT2	33"	838	70	31.8
DSSP-HT3	HT3	48"	1219	75	34.0
DSSP-HT4	HT4	63½"	1613	80	36.3
DSSP-HT5	HT5	79"	2007	85	38.6
DSSP-HT6	HT6	94½"	2400	90	40.1

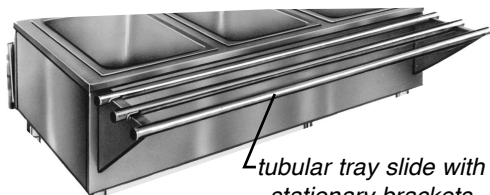


dish shelf

Dish Shelves

- 8" (203mm)-wide, 1¼" (32mm)-thick shelf.
- 18 gauge stainless steel construction.
- Removable without the use of tools.

model #	for model	length		weight	
		in.	mm	lbs.	kg
353985	HT2	33"	838	9	4.1
353986	HT3	48"	1219	10	4.5
353987	HT4	63½"	1613	15	6.8
353988	HT5	79"	2007	24	10.9
355196	HT6	94½"	2400	28	12.7



tubular tray slide with stationary brackets

Tray Slides / Shelves

- Stainless steel stationary brackets or chrome-plated drop brackets.
- Suitable for field mounting.



tray shelf with drop brackets

				Tubular Tray Slides		Solid Tray Shelves	
				10½" (267mm)-wide, three tube-type stainless steel		10" (254mm)-wide, stainless steel shelf.	
length		weight		w/Stationary Brackets	w/Drop Brackets	w/Stationary Brackets	w/Drop Brackets
in.	mm	lbs.	kg	model #	model #	model #	model #
33"	838	14	6.3	TSL-HT2	TSL-DB-HT2	TS-HT2	TS-DB-HT2
48"	1219	18	8.2	TSL-HT3	TSL-DB-HT3	TS-HT3	TS-DB-HT3
63½"	1613	21	9.5	TSL-HT4	TSL-DB-HT4	TS-HT4	TS-DB-HT4
79"	2007	24	10.9	TSL-HT5	TSL-DB-HT5	TS-HT5	TS-DB-HT5
94½"	2400	31	14.1	TSL-HT6	TSL-DB-HT6	TS-HT6	TS-DB-HT6

EAGLE GROUP

100 Industrial Boulevard, Clayton, DE 19938-8903 USA

Phone: 302-653-3000 or 800-441-8440 • Fax: 302-653-2065

www.eaglegrp.com • www.eaglegrpnews.com • www.eaglehmc.com

Printed in U.S.A.
 ©2022 by Eagle Group

Rev. 10/22

Spec sheets available for viewing, printing or downloading from our online literature library at our websites

Although every attempt has been made to ensure the accuracy of the information provided, we cannot be held responsible for typographical or printing errors. Information and specifications are subject to change without notice. Please confirm at time of order.