



Profit from the Eagle Advantage®

# Specification Sheet

## Short Form Specifications

Eagle Hand Sink, model HSA-10-FW. Constructed of all-welded type 304 stainless steel, with deep-drawn positive drain sink bowl, basket drain, inverted "V" edge to prevent spillage, and splash-mounted gooseneck faucet with wrist handles.



#HSA-10-FW

## Options / Accessories

- P-trap
- Tail piece
- End splashes\*
- Side mount wall bracket
- Soap & towel dispenser
- MICROGARD® antimicrobial protection

\* To order end splashes, add suffix "-LS" for left end splash, "-RS" for right end splash, or "-LRS" for left and right end splashes.

Item No.:	_____
Project No.:	_____
S.I.S. No.:	_____

# Hand Sink\* with Standard Wrist Handle Faucet

## MODELS:

- HSA-10-FW

## Design & Construction Features

- Type 304 stainless steel construction.
- Inverted "V" edge rim retards spillage.
- All-welded construction.
- Positive drain bowl.
- Wall bracket included for added strength.
- One piece, deep-drawn, seamless bowl.
- 1½" (38mm) stainless steel basket waste,
- Gooseneck faucet with wrist blade handles.

\* Non-electric. We offer sinks with electric soap dispenser and faucets.

## EAGLE GROUP

100 Industrial Boulevard, Clayton, DE 19938-8903 USA  
 Phone: 302-653-3000 • 800-441-8440 • Fax: 302-653-2065  
[www.eaglegrp.com](http://www.eaglegrp.com)  
[www.eaglegrpnews.com](http://www.eaglegrpnews.com)  
[www.eaglemhc.com](http://www.eaglemhc.com)

For custom configuration or fabrication needs, contact our **SpecFAB® Division**.  
 Phone: 302-653-3000 • Fax: 302-653-2065 • e-mail: [quotes@eaglegrp.com](mailto:quotes@eaglegrp.com)



EG20.21 Rev. 07/23

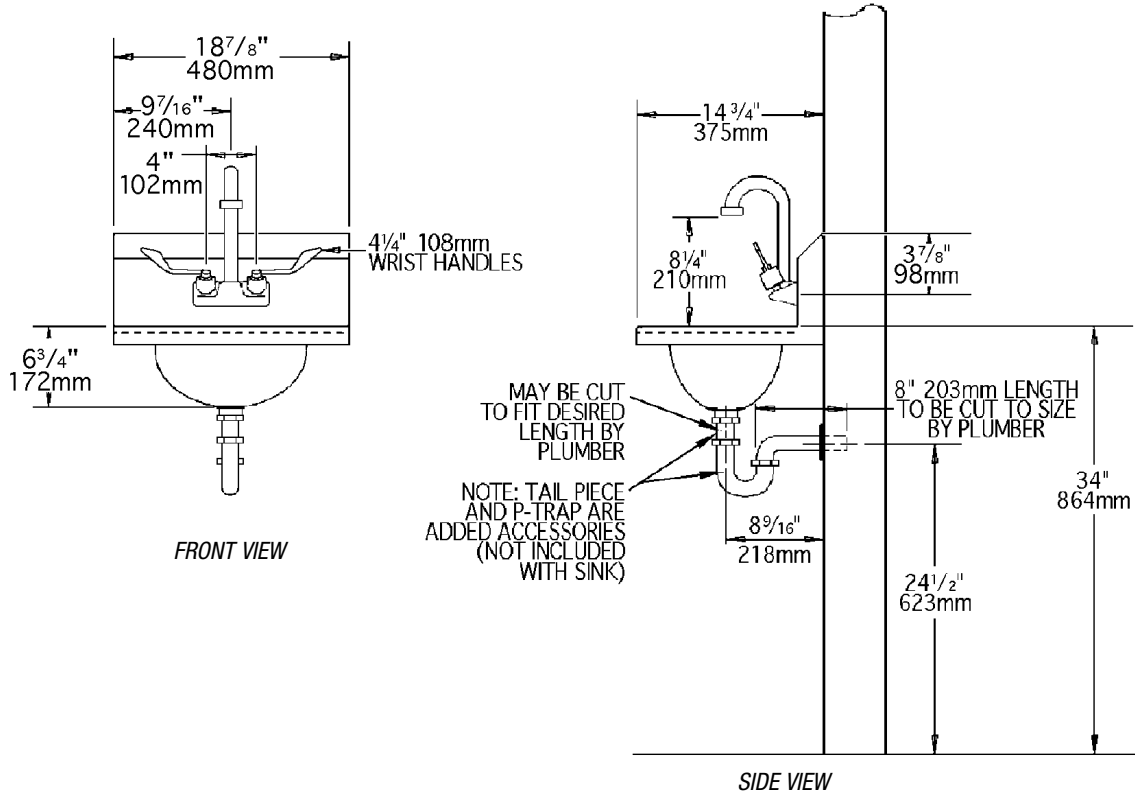
Spec sheets available for viewing, printing or downloading from our online literature library at our websites

Eagle Foodservice Equipment, Eagle MHC, and SpecFAB® are divisions of Eagle Group. ©2023 by the Eagle Group



Item No.: \_\_\_\_\_  
 Project No.: \_\_\_\_\_  
 S.I.S. No.: \_\_\_\_\_

# Hand Sink with Standard Wrist Handle Faucet



model #	bowl size		overall size		weight	
	width in.	length x depth mm	width in.	length x height mm	lbs.	kg
HSA-10-FW	9 <sup>3</sup> / <sub>4</sub> "	13 <sup>1</sup> / <sub>2</sub> " x 6 <sup>3</sup> / <sub>4</sub> "	343 x 248 x 173	14 <sup>3</sup> / <sub>4</sub> " x 18 <sup>7</sup> / <sub>8</sub> " x 12 <sup>3</sup> / <sub>4</sub> "	376 x 480 x 324	14 6.4

**EAGLE GROUP**  
 100 Industrial Boulevard, Clayton, DE 19938-8903 USA  
 Phone: 302-653-3000 or 800-441-8440 • Fax: 302-653-2065  
 www.eaglegrp.com • www.eaglegrpnews.com • www.eaglehmc.com

Printed in U.S.A.  
 ©2023 by Eagle Group  
 Rev. 07/23

Spec sheets available for viewing, printing or downloading from our online literature library at our websites

Although every attempt has been made to ensure the accuracy of the information provided, we cannot be held responsible for typographical or printing errors. Information and specifications are subject to change without notice. Please confirm at time of order.