



Profit from the Eagle Advantage®

# Specification Sheet

Item No.: \_\_\_\_\_  
 Project No.: \_\_\_\_\_  
 S.I.S. No.: \_\_\_\_\_

Catalog Specification Sheet No.

**EG10.13A**

**Drawers**

## Drawer Capacity Per Table

Drawers can be centered, left or right.

table length in. mm	15" x 20" (381 x 508mm) drawer capacity per table	20" x 20" (508 x 508mm) * drawer capacity per table
24" 610	0	0
30" 762	1 centered	0
36" 914	1 centered	1 centered
48" 1219	1 centered; or 1 left & 1 right	1 centered
60" 1524	1 centered; or 1 left & 1 right	1 centered; or 1 left & 1 right
72" 1829	3 (1 centered, 1 left, 1 right)	1 centered; or 1 left & 1 right
84" 2134	4	1 centered; or 1 left & 1 right
96" 2438	4 (2 left, 2 right)	2 (1 left, 1 right)
108" 2743	4 (2 left, 2 right)	4 (2 left, 2 right)
120" 3048	4 (2 left, 2 right)	4 (2 left, 2 right)
132" 3353	6 (2 between each set of legs)	3 (1 between each set of legs)
144" 3658	6 (2 between each set of legs)	3 (1 between each set of legs)

\* Holes are predrilled for 20" x 20" drawers only.

### MODELS:

- 502941
- 500772
- 502942
- 501571
- 502975
- 502976
- 503006
- 503007
- 503010
- 503011
- 502948
- 502949
- 502950

### Drawers\* ...

- Includes full-extension zinc-plated steel slides with rubber stops.
- Type 430 stainless steel.
- To specify drawer assemblies only for hardwood tables, you must order model #605500 mounting kit along with drawer selected.
- To specify drawer assemblies for custom equipment (fabricated through SpecFAB®) which requires angle frame construction, you must order model #605499 mounting kit along with drawer selected.



drawer with pull flange



drawer with pull flange and full front

### ...with Pull Flange

model #	width x length x height		weight	
	in.	mm	lbs.	kg
502941 **	20" x 15" x 5"	508 x 381 x 127	19	8.6
500772	20" x 20" x 5"	508 x 508 x 127	20	9.0

\*\* Tables must be field drilled for mounting.

### ...with Pull Flange and Full Front

- Hemmed safety pull handle.

model #	width x length x height		weight	
	in.	mm	lbs.	kg
502942 **	20" x 15" x 5"	508 x 381 x 127	25	11.3
501571	20" x 20" x 5"	508 x 508 x 127	27	12.3

\*\* Tables must be field drilled for mounting.

\* No locks available for these drawers.

### EAGLE GROUP

100 Industrial Boulevard  
 Clayton, DE 19938-8903 USA

Phone: 302-653-3000 • 800-441-8440

Fax: 302-653-2065

www.eaglegrp.com • www.eaglemhc.com

For custom configuration or fabrication needs, contact our SpecFAB® Division.

Phone: 302-653-3000 • Fax: 302-653-2065 • e-mail: quotes@eaglegrp.com



EG10.13A Rev. 06/22

Spec sheets available for viewing, printing or downloading from our online literature library at [www.eaglegrp.com](http://www.eaglegrp.com)

Eagle Foodservice Equipment, Eagle MHC, SpecFAB®, and Retail Display are divisions of Eagle Group. ©2022 by the Eagle Group



Profit from the Eagle Advantage®

Item No.: \_\_\_\_\_  
 Project No.: \_\_\_\_\_  
 S.I.S. No.: \_\_\_\_\_

## Drawers for Stainless Steel and Hardwood Tables



drawer with polymer slides

### Drawers with Polymer Slides \*

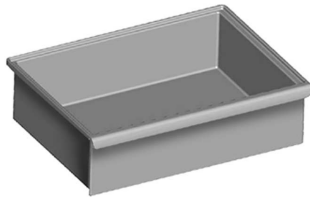
- Includes ½" (13mm)-thick polycarbonate grooved friction slides.
- To specify drawer assemblies for tabletops with box marine edge, you must order one of the following based on the table width, along with drawer selected
  - #611383 for 24" (610mm)-wide tables
  - #611384 for 30" (762mm)-wide tables
  - For tables 36" (914mm) and wider, consult factory.
- For standard worktables only, not for equipment using angle frame construction.
- Weight capacity up to 20 lbs. (9.0 kg).

\* No locks available for these drawers.

width x length x height in. mm	For all 24" (610mm)-wide Standard Tables		For all 30" and 36" (787 and 914mm)-wide Standard Tables		For 36" (914mm)-wide Tables with Framing Specified at 30% (765mm) Center Lines	
	model #	weight lbs. kg	model #	weight lbs. kg	model #	weight lbs. kg
20" x 15" x 5" 508 x 381 x 127	502976 **	11 5.0	503007 **	11 5.0	503011 **	11 5.0
20" x 20" x 5" 508 x 508 x 127	502975 ***	12 5.4	503006	12 5.4	503010	15 6.8

\*\* Tables must be field drilled for mounting.

\*\*\* Drawer #502975 will protrude beyond tabletop width.



polymer drawer

### Polymer Drawers

- Made of heavy gauge polymer.
- Includes pull flange and built-in drawer stop.

model #	width x length x height in. mm		weight lbs. kg	
502948	13 7/8" x 19" x 3"	352 x 483 x 76	13	5.8
502949	13 7/8" x 19" x 6"	352 x 483 x 152	14	6.4
502950	13 7/8" x 19" x 9"	352 x 483 x 229	18	8.2

### Drawer Kits for Stainless Steel Worktables

- Factory-installed.
- Order at time of worktable order.

add \*

suffix #	description
-D1	20" x 20" x 5" enclosed drawer assembly (#501572)
-D2	20" x 20" x 5" drawer with pull flange and full front (#501571)
-D3	20" x 20" x 5" drawer with pull flange (#500772)

\* Example: T3048SE-BS-D1

### EAGLE GROUP

100 Industrial Boulevard, Clayton, DE 19938-8903 USA

Phone: 302-653-3000 or 800-441-8440 • Fax: 302-653-2065

www.eaglegrp.com • www.eaglehmc.com

Printed in U.S.A.  
 ©2022 by Eagle Group

Rev. 06/22

Spec sheets available for viewing, printing or downloading from our online literature library at [www.eaglegrp.com](http://www.eaglegrp.com)

Although every attempt has been made to ensure the accuracy of the information provided, we cannot be held responsible for typographical or printing errors. Information and specifications are subject to change without notice. Please confirm at time of order.