



Profit from the Eagle Advantage®

Specification Sheet

Short Form Specifications

Eagle Spec-Bar® Workboard, model _____. Heavy gauge type 304 stainless steel body, legs, leg channels and cross rails. Top provided with 1½" drain and stainless steel removable perforated insert. Stainless steel adjustable bullet feet.



Options / Accessories

- Tubing chase

EAGLE GROUP
100 Industrial Boulevard, Clayton, DE 19938-8903 USA
Phone: 302-653-3000 • 800-441-8440 • Fax: 302-653-2065
www.eaglegrp.com
www.eaglemhc.com

For custom configuration or fabrication needs, contact our **SpecFAB® Division**.
Phone: 302-653-3000 • Fax: 302-653-2065 • e-mail: quotes@eaglegrp.com

Item No.: _____
Project No.: _____
S.I.S. No.: _____

Spec-Bar® Workboards

MODELS:

- | | |
|---|---|
| <input type="checkbox"/> WB12-19 | <input type="checkbox"/> WB12-24 |
| <input type="checkbox"/> WB18-19 | <input type="checkbox"/> WB18-24 |
| <input type="checkbox"/> WB24-19 | <input type="checkbox"/> WB24-24 |
| <input type="checkbox"/> WB30-19 | <input type="checkbox"/> WB30-24 |
| <input type="checkbox"/> WB36-19 | <input type="checkbox"/> WB36-24 |
| <input type="checkbox"/> WB42-19 | <input type="checkbox"/> WB42-24 |
| <input type="checkbox"/> WB48-19 | <input type="checkbox"/> WB48-24 |

Design and Construction Features

- Backsplash, sides, front panel, drain pan and perforated insert are constructed of 20 gauge type 304 stainless steel.
- Leg channels, legs and crossbracing are 16 gauge type 304 stainless steel.
- Legs are 1½" (41 mm) diameter, with stainless steel adjustable bullet feet.
- Removable insert made of perforated stainless steel.
- All models are 37" (940mm) overall height.
- 1½" (38mm) I.P.S. threaded drain with nut and washer.



EG40.27 Rev. 05/24

Spec sheets available for viewing, printing or downloading from our online literature library at our websites

Eagle Foodservice Equipment, Eagle MHC, and SpecFAB® are divisions of Eagle Group. ©2024 by the Eagle Group

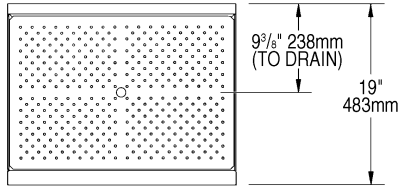


Profit from the Eagle Advantage®

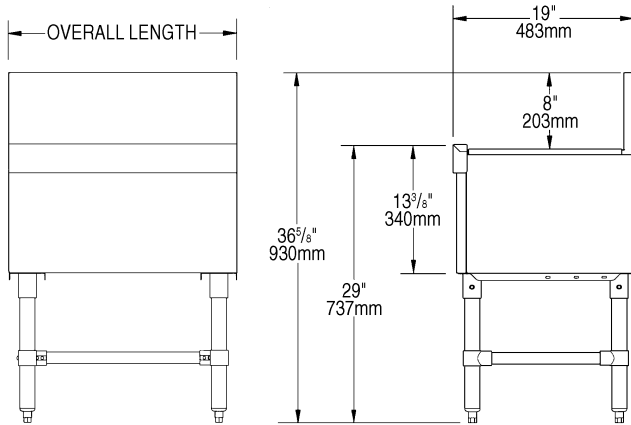
Item No.: _____
 Project No.: _____
 S.I.S. No.: _____

Spec-Bar® Workboards

19" (483mm)-wide Workboards



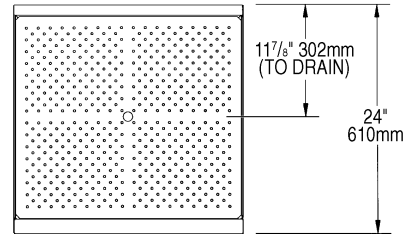
TOP VIEW



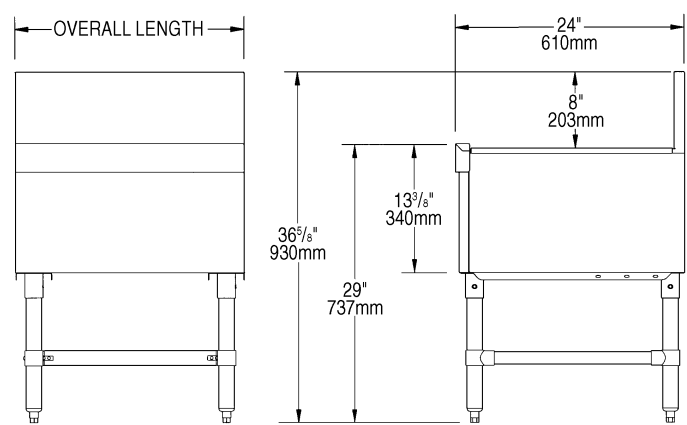
FRONT VIEW

SIDE VIEW

24" (610mm)-wide Workboards



TOP VIEW



FRONT VIEW

SIDE VIEW

model #	length		weight	
	in.	mm	lbs.	kg
WB12-19	12"	305	25	11.3
WB18-19	18"	457	30	13.6
WB24-19	24"	610	35	15.9
WB30-19	30"	762	40	18.1
WB36-19	36"	914	45	20.4
WB42-19	42"	1067	50	22.7
WB48-19	48"	1219	55	24.9

model #	length		weight	
	in.	mm	lbs.	kg
WB12-24	12"	305	27	12.2
WB18-24	18"	457	32	14.5
WB24-24	24"	610	37	16.8
WB30-24	30"	762	42	19.1
WB36-24	36"	914	47	21.3
WB42-24	42"	1067	52	23.6
WB48-24	48"	1219	57	25.9

EAGLE GROUP

100 Industrial Boulevard, Clayton, DE 19938-8903 USA

Phone: 302-653-3000 or 800-441-8440 • Fax: 302-653-2065

www.eaglegrp.com • www.eaglemhc.com

Printed in U.S.A.
 ©2024 by Eagle Group

Rev. 05/24

Spec sheets available for viewing, printing or downloading from our online literature library at our websites

Although every attempt has been made to ensure the accuracy of the information provided, we cannot be held responsible for typographical or printing errors. Information and specifications are subject to change without notice. Please confirm at time of order.