

INSTRUCTIONS**CAUTION**

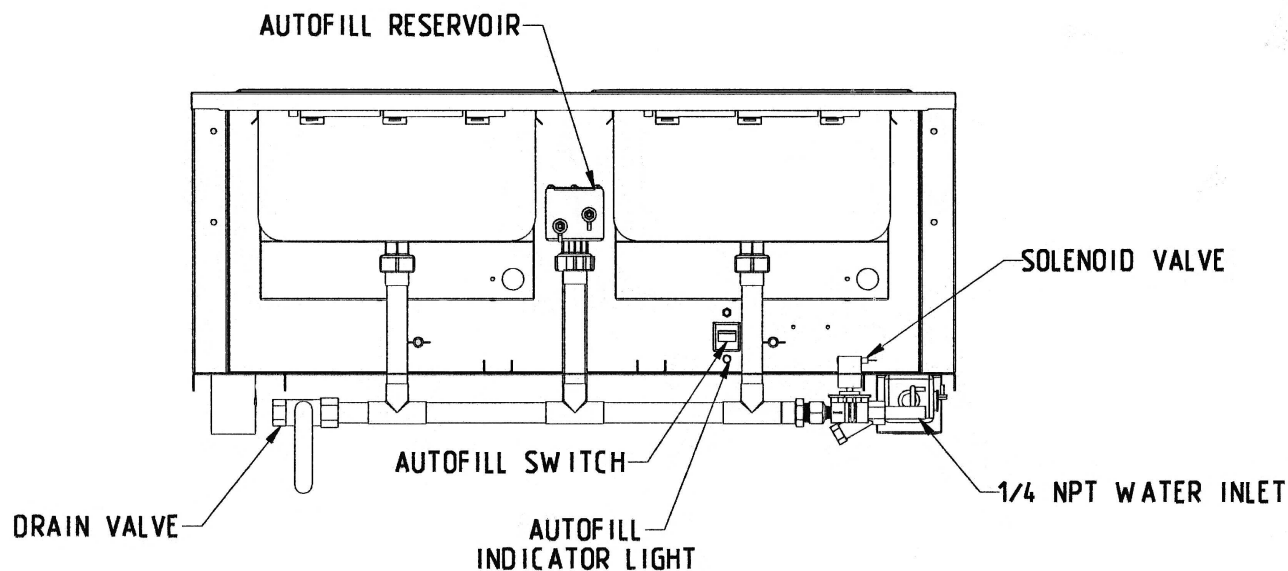
INSPECT CONTENTS IMMEDIATELY AND FILE CLAIM WITH DELIVERING CARRIER FOR ANY DAMAGE.

SAVE YOUR BOX AND ALL PACKING MATERIALS.

YOU ARE RESPONSIBLE FOR DAMAGE TO YOUR UNIT IF RETURNED IMPROPERLY PACKED.

INSTALLATION/OPERATION

1. Check unit left-to-right and front-to-back to make sure unit is level. Adjust the adjustable feet as necessary. Note - If unit is not level, the amount of water will differ in wells.
2. Attach a continuous flowing hot water source to the 1/4" NPT water connection inlet.
3. Attach drain and overflow to a vented waste drain.
4. Plug unit into proper power source stated on model/serial plate. Turn water source on and the AutoFill® ON/OFF switch to "ON". (Remember that the solenoid will make a "pop" sound the first time this is turned on.) The AutoFill® system will fill and maintain the proper water level in all wells. If there is a desire to run the unit without automatically filling the wells with water, simply turn the ON/OFF switch to the "OFF" position. The AutoFill® system runs independently of the hot wells, so the wells are still operational.



*FRONT VIEW OF 2-WELL UNIT WITH AUTOFILL® WATER SYSTEM
(SHOWN WITH FRONT AND BASE REMOVED)*

(End)

EG10075 Revised 06/07