

Drawers for Tables with Channel Frame

Drawers #500772, 501571, 502941*, and 502942*

ASSEMBLY INSTRUCTIONS

*Drawers #502941 and 502942 (15" left-to-right) require holes to be drilled into table hat channels.

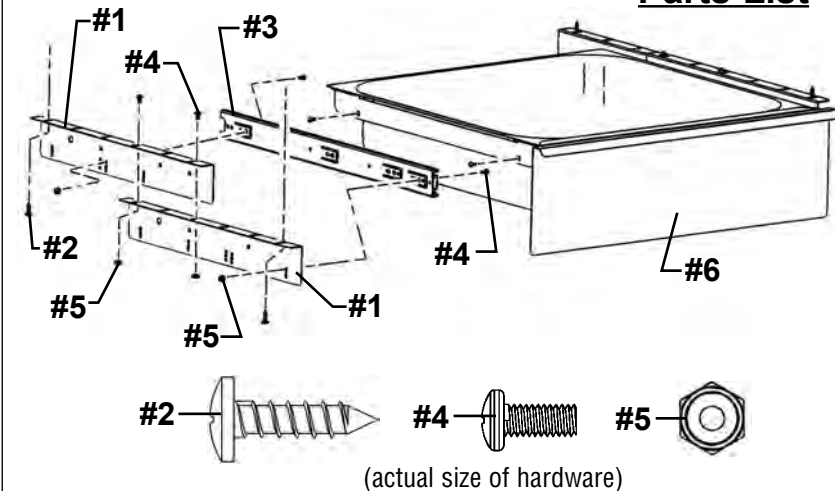
CAUTION

inspect contents immediately and file claim with deliverer for any damage.

SAVE YOUR BOX AND ALL PACKING MATERIALS.

You are responsible for damage to your unit if returned improperly packed.

Parts List



#	qty	part #	description
#1	4	373767	Drawer Mounting Bracket Angles
#2	4	313630*	Drive screw, #12 x 3/4"
#3	2	358002	Drawer slide
#4	12	373748	Machine screw, #8—32 x 3/8"
#5	12	313196	Lock nut, #8
#6	1	n/a	Drawer Assembly

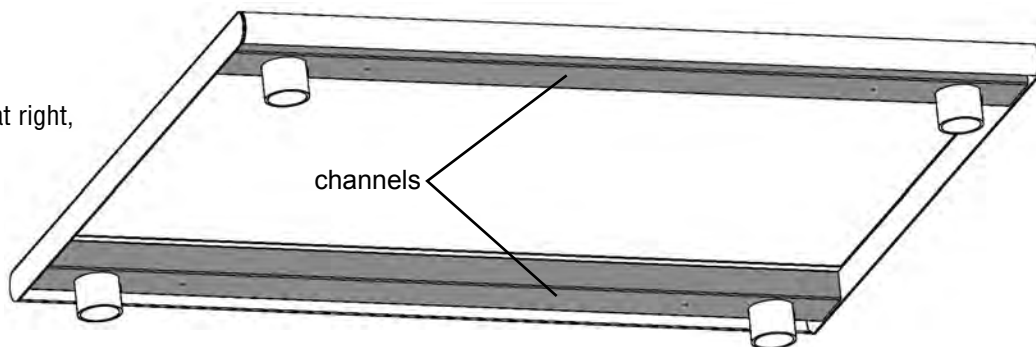
* For 20" x 20" bowls: these screws are premounted to the table channel framing (underneath tabletop), and will be used to mount drawer angles.
For 15" x 20" bowls: screws can be found in the hardware package provided with drawer.

Tools needed:

- 11/32" or 9mm socket or wrench
- Phillips screwdriver
- Tape measure

How to determine if you have a "channel frame" table:

"Channels," indicated in illustration at right, run left-to-right underneath tabletop.



If your table framing does not resemble the framing above, see angle frames on page 5.

(continued on Page 2)

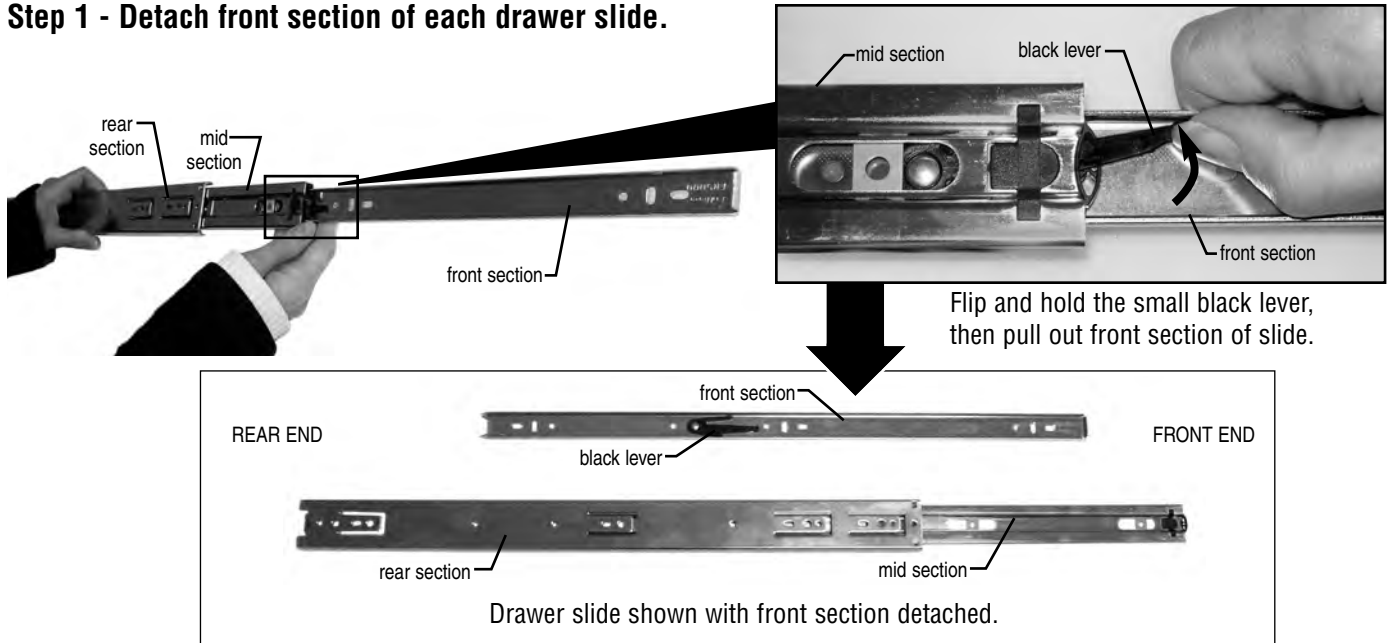
eG9839 revised 10/15

Drawers for Tables with Channel Frame

Drawers #500772, 501571, 502941, and 502942

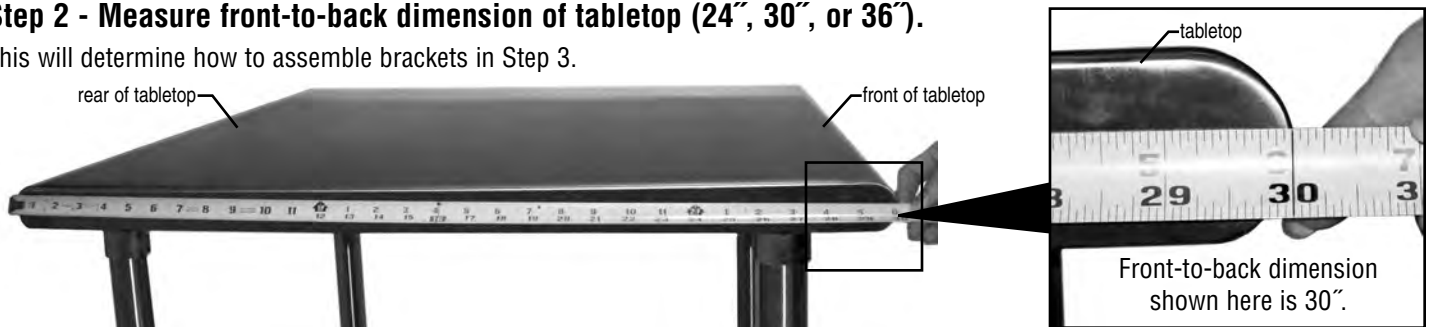
ASSEMBLY INSTRUCTIONS

Step 1 - Detach front section of each drawer slide.



Step 2 - Measure front-to-back dimension of tabletop (24", 30", or 36").

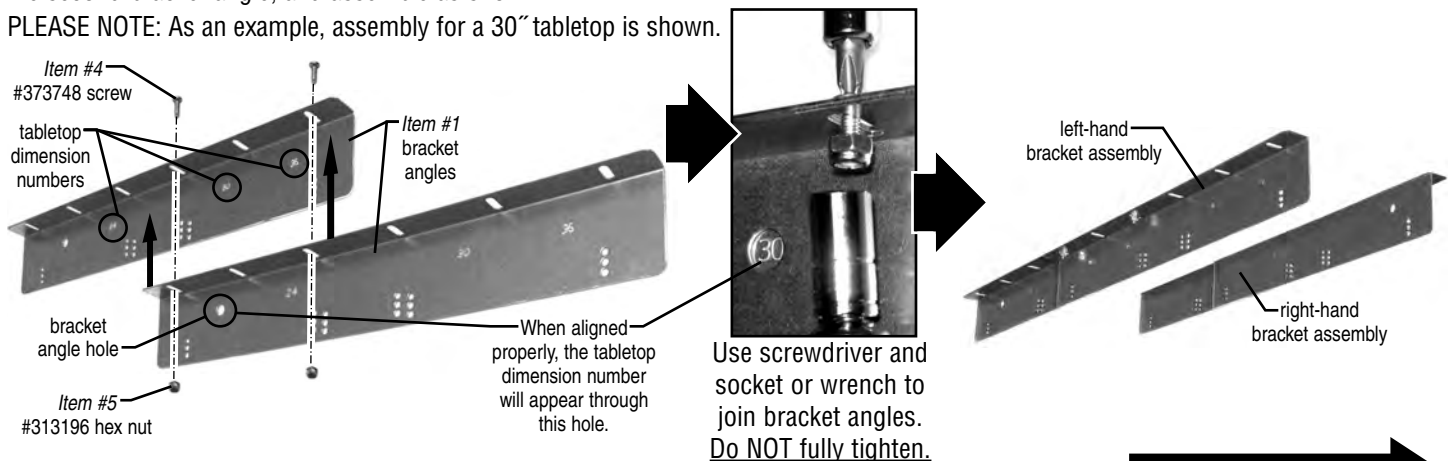
This will determine how to assemble brackets in Step 3.



Step 3 - Assemble brackets, based on front-to-back dimension of tabletop (24", 30", or 36").

Each bracket assembly consists of two bracket angles. Align hole in the first bracket angle with applicable tabletop dimension number in the second bracket angle, and assemble as shown.

PLEASE NOTE: As an example, assembly for a 30" tabletop is shown.



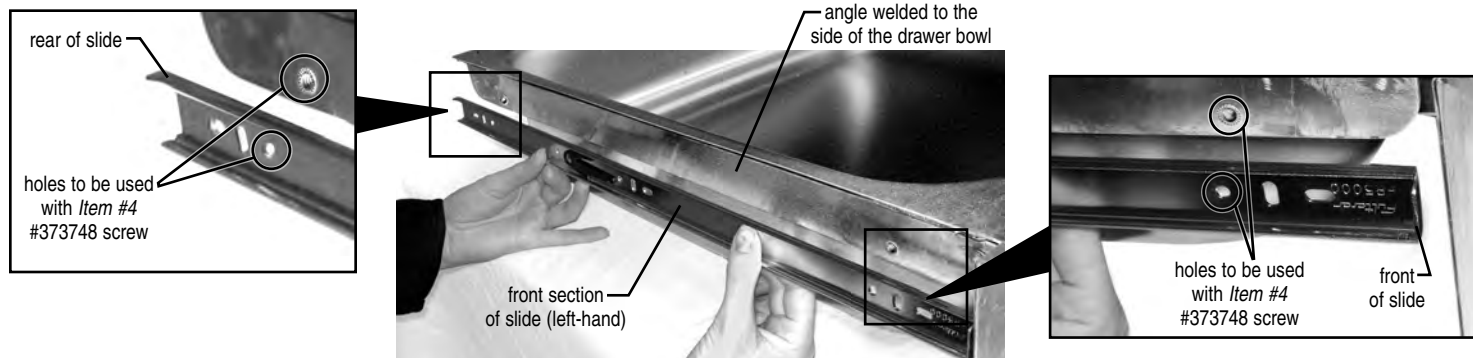
(continued on Page 3)

Drawers for Tables with Channel Frame

Drawers #500772, 501571, 502941, and 502942

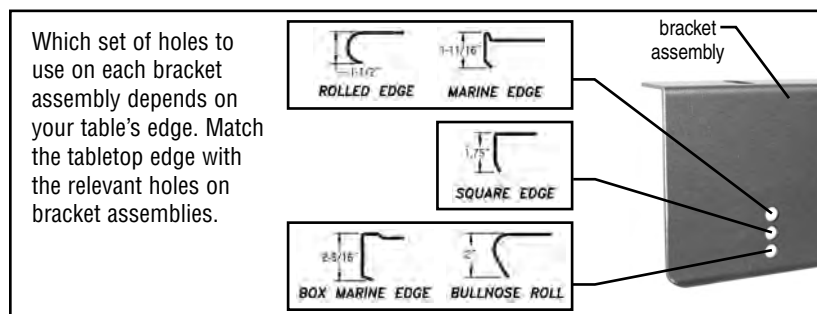
Step 4 - Screw front section of slides to drawer bowl.

Find the two holes of the slide that line up with the two holes in the angle welded to the side of the drawer bowl.



Step 5 - Screw mid & rear sections of slides to bracket assemblies.

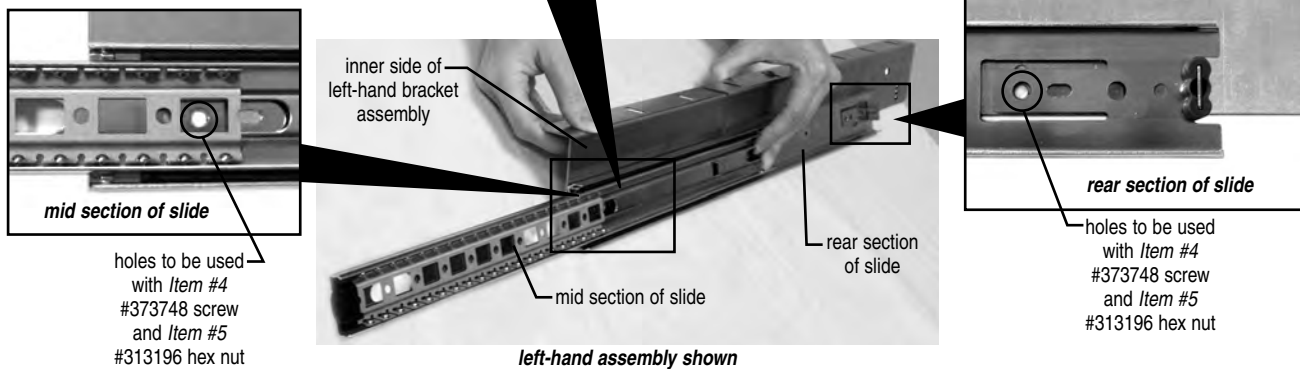
PLEASE NOTE: Slides must be extended to access applicable screw holes. Once assembled, tighten screws from Step 3.



Attach this end first!

Align hole in rear section of slide (seen in photo below) with bracket hole, being sure that the hole in mid section of slide lines up with bracket hole to the front of the assembly.

Attach this end second!



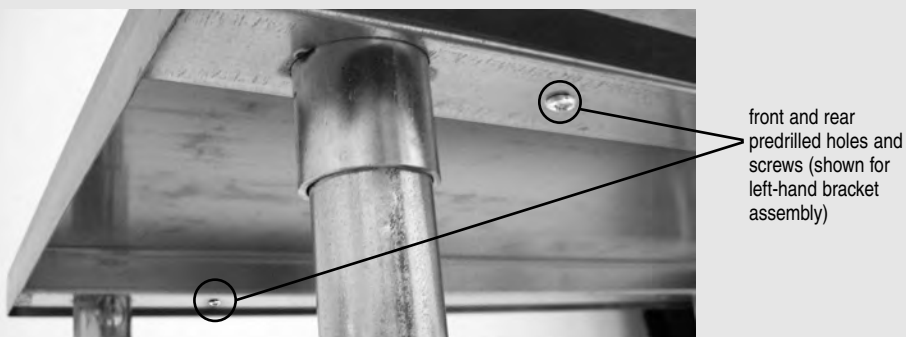
Before continuing, please read the following about tabletop channels (located underneath tabletop):

For 20" x 20" drawers

Tables with channels feature predrilled holes with screws (see photo at right) for bracket assemblies. Take the screws out and set aside.

For 15" x 20" drawers:

Tables with channels require holes to be drilled, using a 1/8" drill bit.



(continued on Page 4)

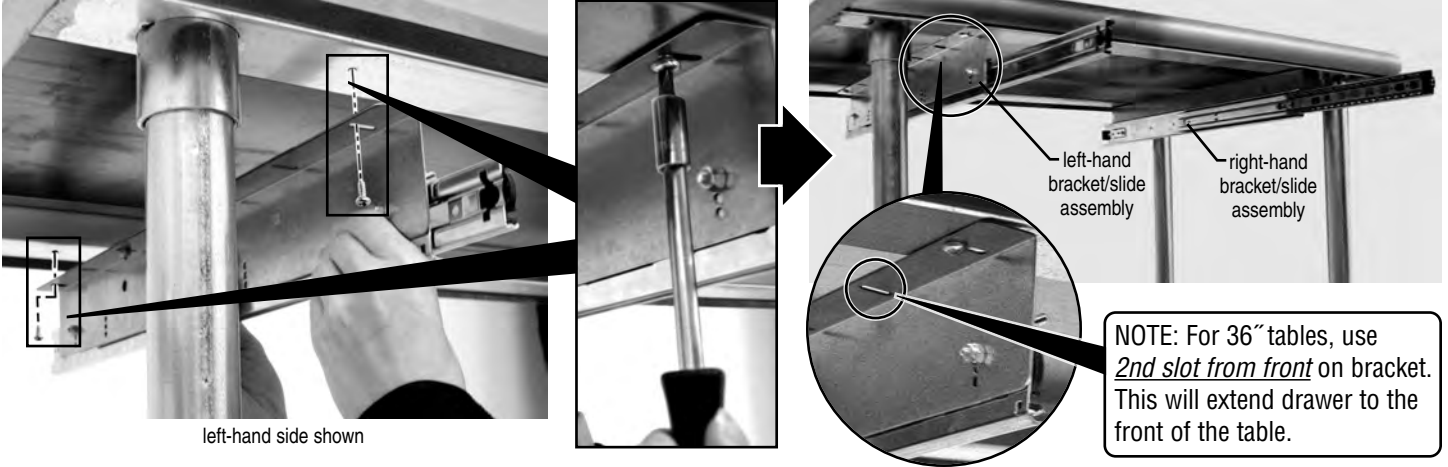
Drawers for Tables with Channel Frame

Drawers #500772, 501571, 502941, and 502942

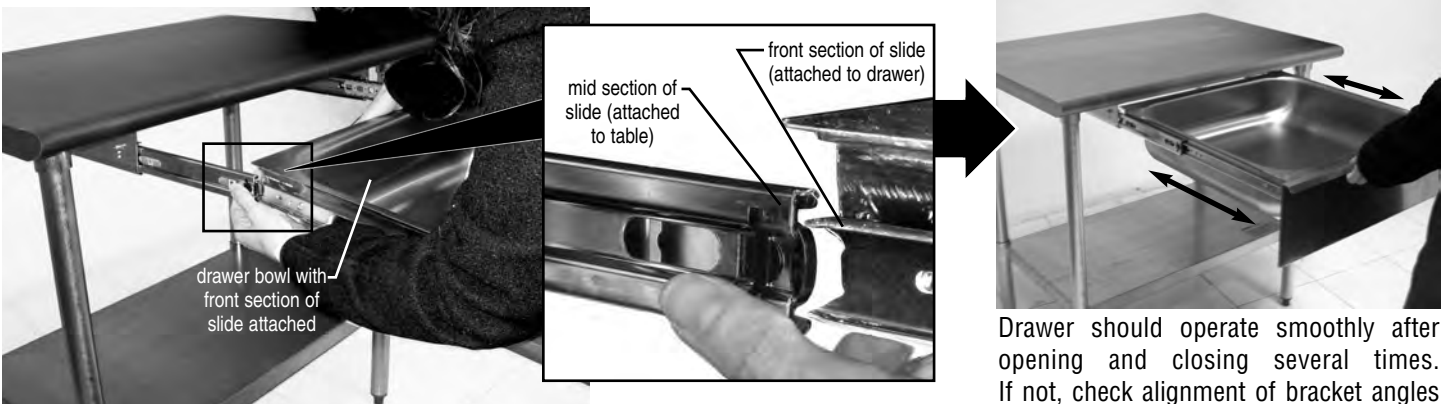
ASSEMBLY INSTRUCTIONS

Step 6 - Attach bracket/slide assemblies (created in Step 5) to table channels, using screwdriver.

PLEASE NOTE: Do NOT tighten screws.

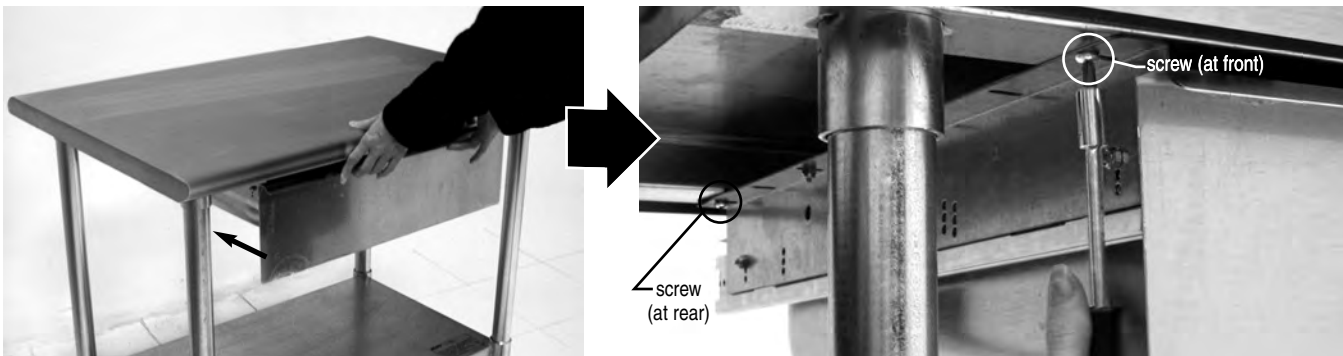


Step 7 - Attach drawer to table.



Carefully align front slide section (attached to drawer bowl) with mid slide section (mounted to table) and close drawer fully. Some resistance is normal as you reassemble drawer slides.

Step 8 - Tighten remaining hardware.



Close drawer.

Make sure all hardware is secure.

Assembly is complete.

(End)

PLEASE NOTE:

To mount drawers onto custom equipment with angle frame construction, kit #605499 is required.

Drawers for Tables with Angle Frame

Drawers #500772, 501571, 502941, and 502942

ASSEMBLY INSTRUCTIONS

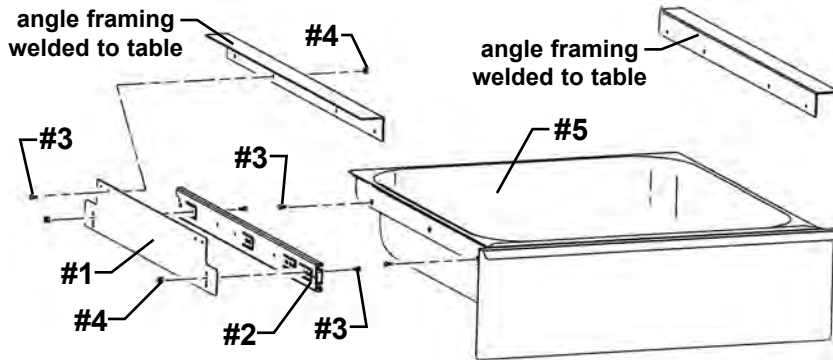
CAUTION

inspect contents immediately and file claim with deliverer for any damage.

SAVE YOUR BOX AND ALL PACKING MATERIALS.

You are responsible for damage to your unit if returned improperly packed.

Parts List



#	qty	part #	description
#1	2	373779	Drawer Mounting Bracket
#2	2	358002	Drawer slide
#3	12	373748	Machine screw, #8—32 x 3/8"
#4	12	313196	Lock nut, #8
#5	1	n/a	Drawer Assembly



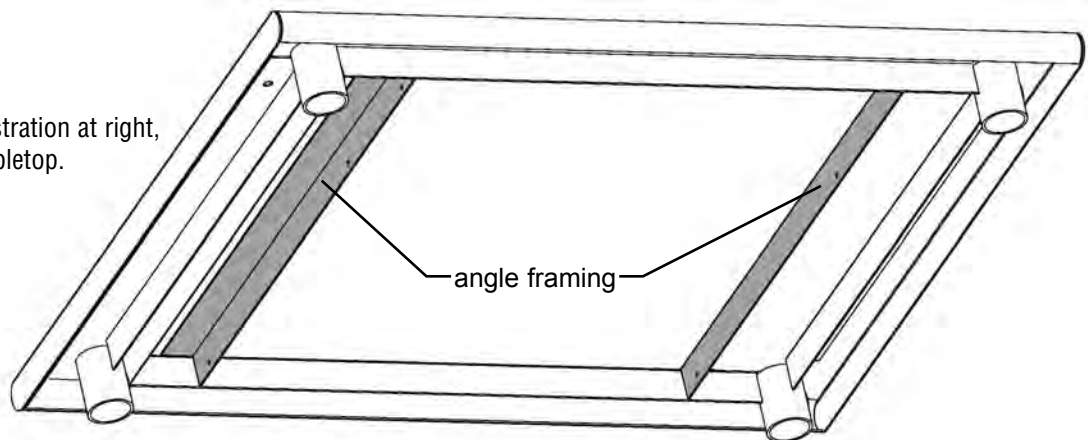
(actual size of hardware)

Tools needed:

- 11/32" or 9mm socket or wrench
- Phillips screwdriver

How to determine if you have an "angle frame" table:

"Angle framing," indicated in illustration at right, runs front-to-back underneath tabletop.



If your table framing does not resemble the framing above, see channel frames on front page.

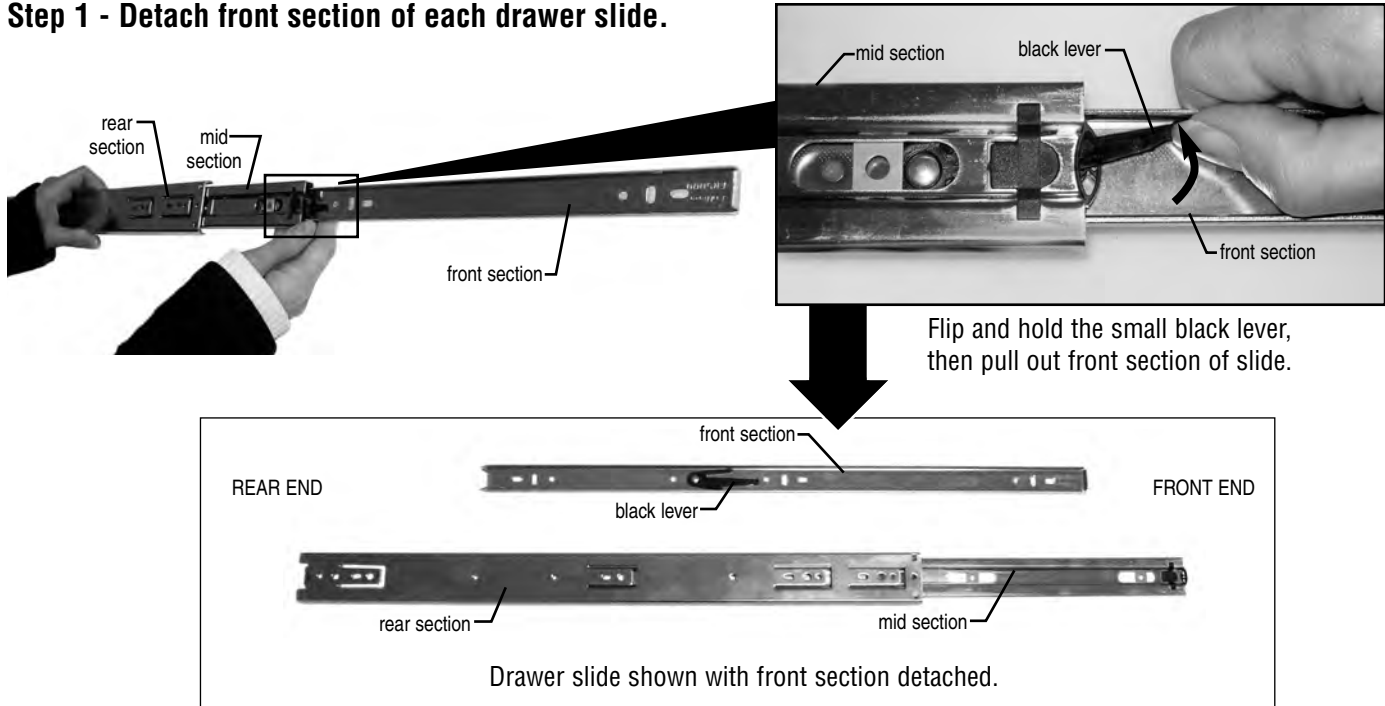
(continued on Page 6)

Drawers for Tables with Angle Frame

Drawers #500772, 501571, 502941, and 502942

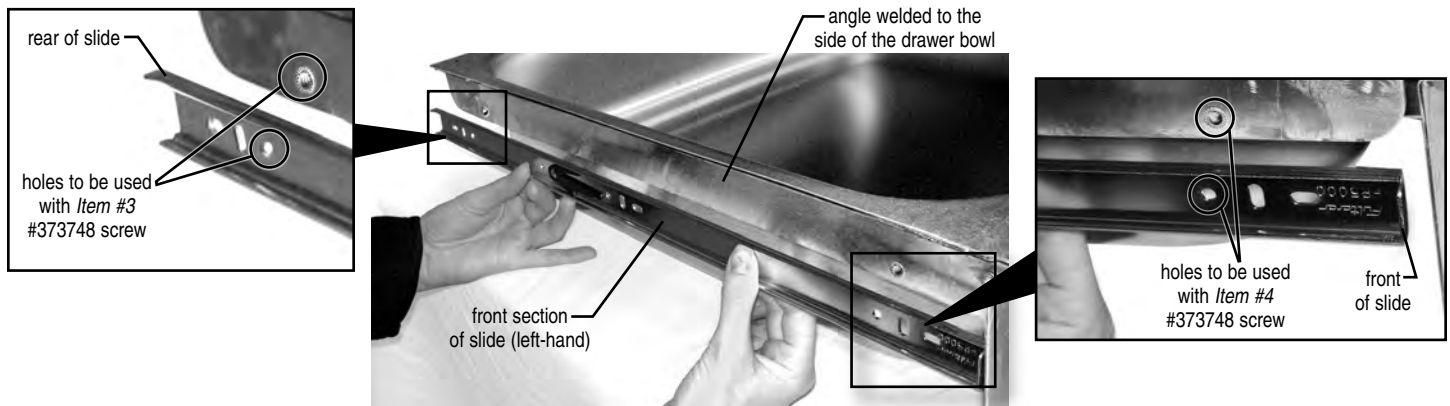
ASSEMBLY INSTRUCTIONS

Step 1 - Detach front section of each drawer slide.



Step 2 - Screw front section of slides to drawer bowl.

Find the two holes of the slide that line up with the two holes in the angle welded to the side of the drawer bowl.



(continued on Page 7) 

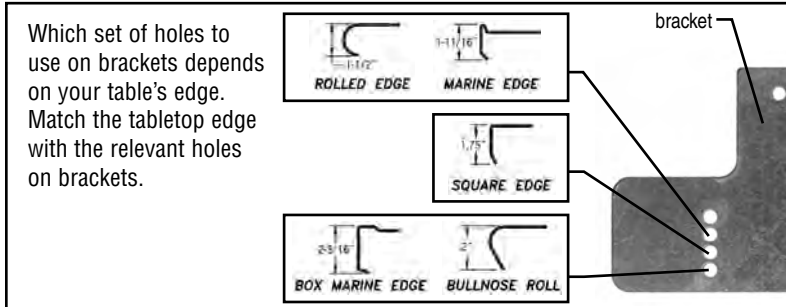
Drawers for Tables with Angle Frame

Drawers #500772, 501571, 502941, and 502942

ASSEMBLY INSTRUCTIONS

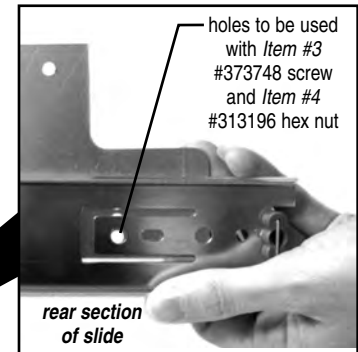
Step 3 - Screw mid & rear sections of slides to brackets.

PLEASE NOTE: Slides must be extended to access applicable screw holes.

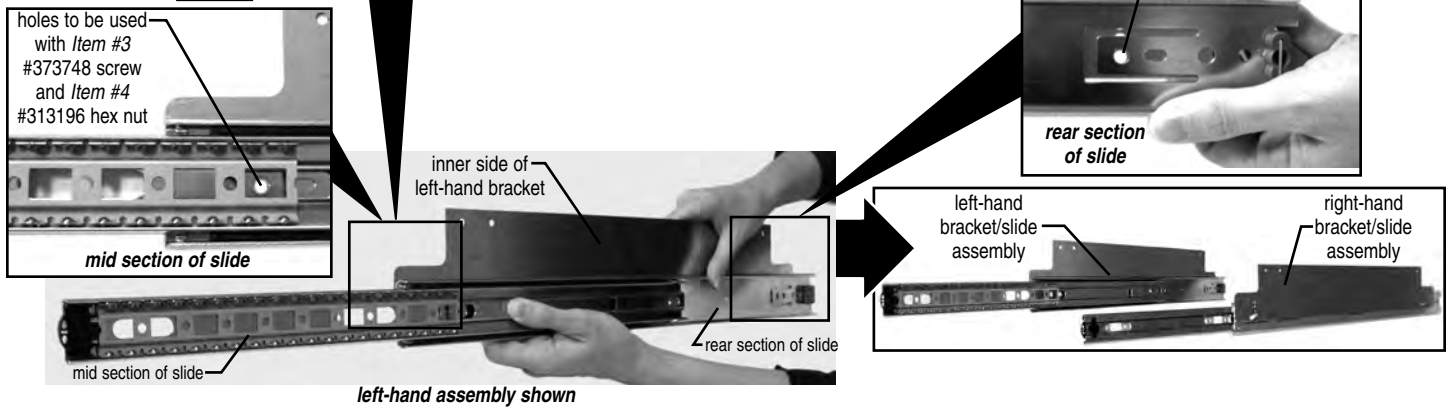


Attach this end first!

Align hole in rear section of slide (seen in photo below) with bracket hole, being sure that the hole in mid section of slide lines up with bracket hole to the front of the assembly.

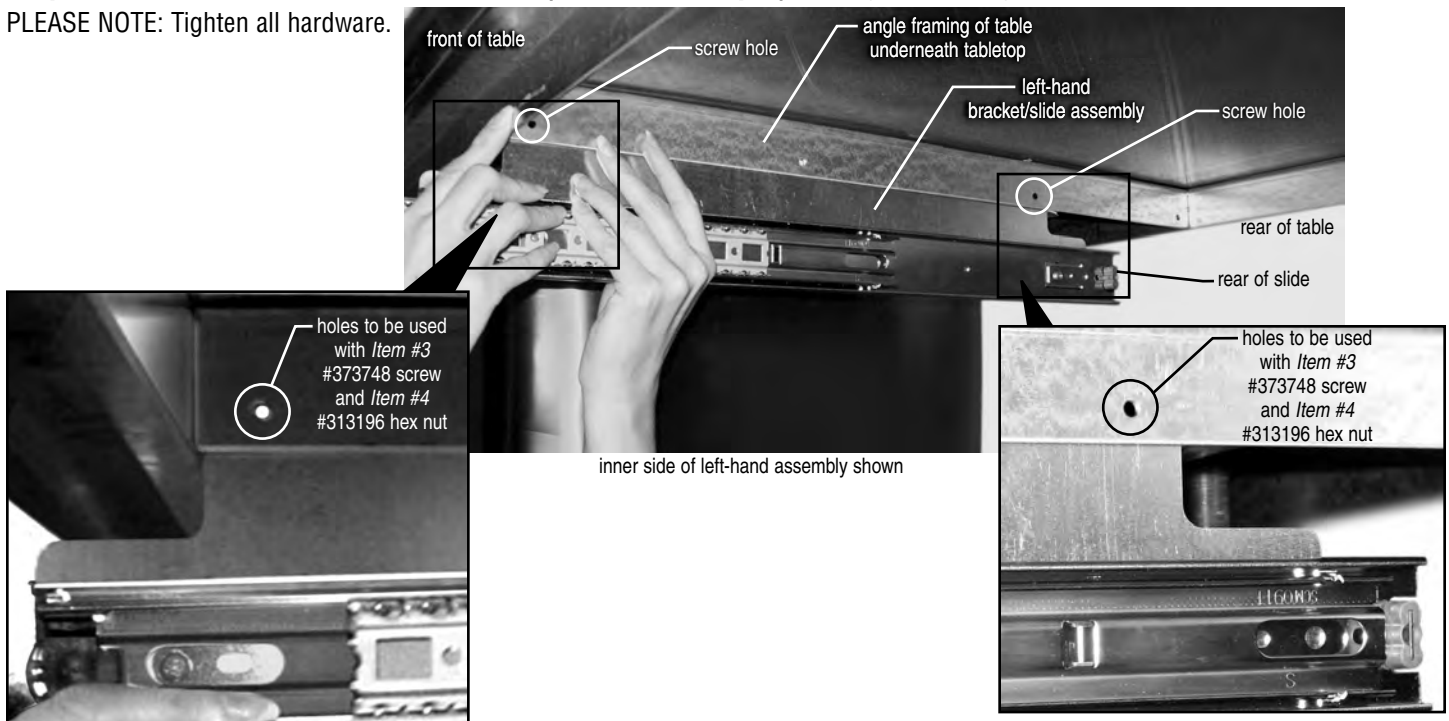


Attach this end second!



Step 4 - Attach bracket/slide assemblies (created in Step 3) to angle framing of table.

PLEASE NOTE: Tighten all hardware.



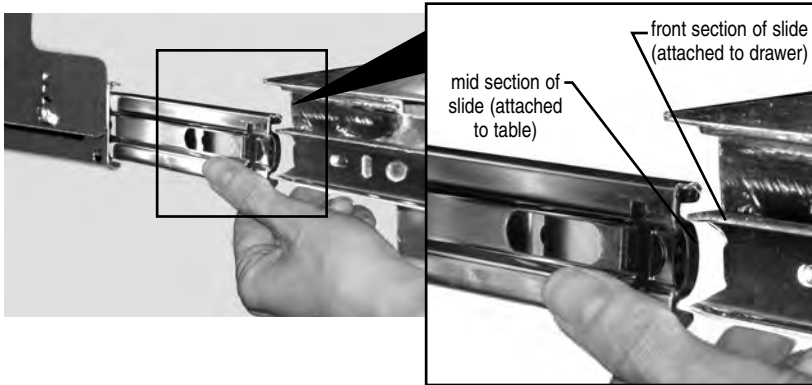
(continued on back page) →

Drawers for Tables with Angle Frame

Drawers #500772, 501571, 502941, and 502942

ASSEMBLY INSTRUCTIONS

Step 5 - Attach drawer to table.



Carefully align front slide section (attached to drawer bowl) with mid slide section (mounted to table), and close drawer fully. Some resistance is normal as you reassemble drawer slides.



Drawer should operate smoothly after opening and closing several more times. If not, check alignment and repeat this step.

Step 6 - Make sure all hardware is secure.

Assembly is complete.

(End)