



Profit from the Eagle Advantage®

Specification Sheet

Short Form Specifications

Eagle Enclosed Base Solid Top Unit, model _____.
Available with open front or with stainless steel sliding doors with recessed handles. Top is type 16/430 stainless steel with heavy gauge stainless steel body and full-depth stainless steel undershelf welded to outer wrapper. 1 1/2" O.D. stainless steel tubular legs with adjustable stainless steel bullet feet.



unit shown with open front

Options / Accessories**

- Center shelf (add suffix "-CS")
- Overshelf
- Serving shelf
- Tray slide
- Tray shelf
- Casters
- Spec-Master® marine edge
- Decorative laminates

** For more accessories, see Catalog Sheets #EG30.20A and EG30.20B

EAGLE GROUP

100 Industrial Boulevard, Clayton, DE 19938-8903 USA
Phone: 302-653-3000 • 800-441-8440 • Fax: 302-653-2065
www.eaglegrp.com
www.eaglegrpnews.com
www.eaglemhc.com

For custom configuration or fabrication needs, contact our SpecFAB® Division.
Phone: 302-653-3000 • Fax: 302-653-2065 • e-mail: quotes@eaglegrp.com

Item No.: _____
 Project No.: _____
 S.I.S. No.: _____

Spec-Master® Solid Top Units— Enclosed Base

MODELS:

- ST30B
- ST3CB
- ST40B
- ST4CB
- ST50B
- ST5CB

Construction

- Top is constructed of 16 gauge type 430 series stainless steel with hat channel support.
- Cabinet body is constructed of highly polished 20 gauge stainless steel.
- Legs are 1 1/2" (41mm) O.D. stainless steel tubing fitted with adjustable stainless steel feet.
- Bottom shelf is full depth of unit and welded to outer wrapper.

Sliding doors (when indicated)

- Doors are 22 gauge type 430 stainless steel construction complete with recessed stainless steel handle.
- Doors sit within an exclusive rollerless track assembly providing easier cleaning and lower maintenance.

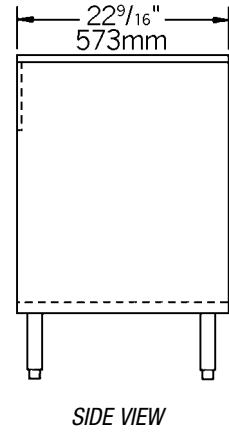
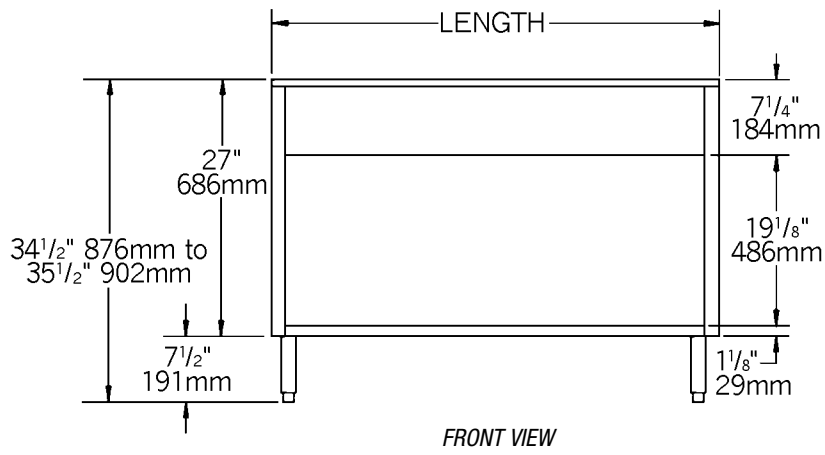
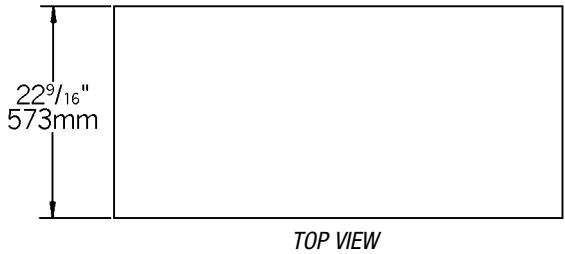


Spec sheets available for viewing, printing or downloading from our online literature library at our websites



Item No.: _____
 Project No.: _____
 S.I.S. No.: _____

Spec-Master® Solid Top Units—Enclosed Base



WITH OPEN FRONT			WITH SLIDING DOORS				
model #	weight		model #	weight		length	
	lbs.	kg		lbs.	kg	in.	mm
ST3OB	225	102.1	ST3CB	233	105.7	48"	1219
ST4OB	265	120.2	ST4CB	274	124.3	63 ¹ / ₂ "	1613
ST5OB	305	138.3	ST5CB	315	142.9	79"	2007

All models available with casters. To order, add prefix "P" to model number. Example: PST4CB

EAGLE GROUP
 100 Industrial Boulevard, Clayton, DE 19938-8903 USA
 Phone: 302-653-3000 or 800-441-8440 • Fax: 302-653-2065
 www.eaglegrp.com • www.eaglegrpnews.com • www.eaglehmc.com

Printed in U.S.A.
 ©2023 by Eagle Group
 Rev. 02/23

Spec sheets available for viewing, printing or downloading from our online literature library at our websites

Although every attempt has been made to ensure the accuracy of the information provided, we cannot be held responsible for typographical or printing errors. Information and specifications are subject to change without notice. Please confirm at time of order.