

# Lifestor Dunnage Rack

## ASSEMBLY INSTRUCTIONS

### CAUTION

INSPECT CONTENTS IMMEDIATELY AND FILE CLAIM WITH DELIVERING CARRIER FOR ANY DAMAGE. **SAVE YOUR BOX AND ALL PACKING MATERIALS.** YOU ARE RESPONSIBLE FOR DAMAGE TO YOUR UNIT IF RETURNED IMPROPERLY PACKED.

### Parts List

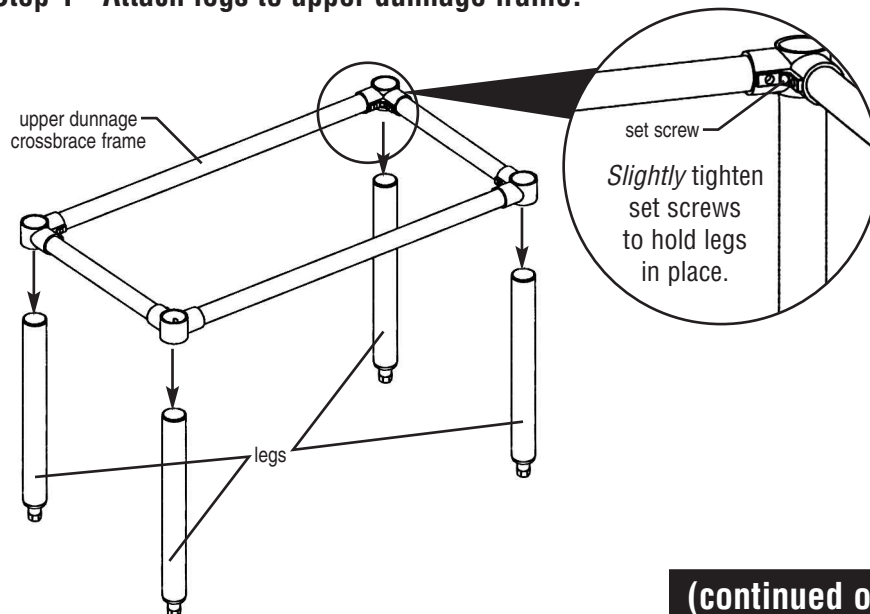
Item #	qty	part number	description
1	*	*	polymer shelf section (with MICROGARD®)
2	4	*	front-to-back crossbrace
3	8	317647	casting
4	4	*	side-to-side crossbrace
5	4	347789	leg (foot included)
<b>For mobile units only</b>			
6	2	A205340	caster
7	2	A205341	caster with brake (not shown)

\* Part number and/or quantity vary, depending on size of unit(s) ordered.

**weight capacities:**

- 1,000 lbs. for stationary units
- 800 lbs. for mobile units.

### Step 1 - Attach legs to upper dunnage frame.



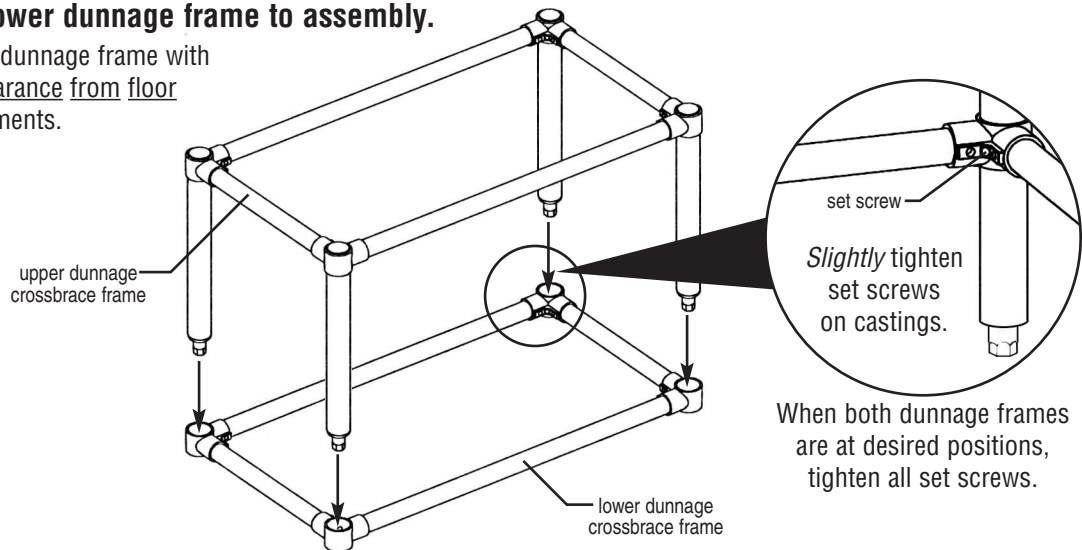
**(continued on back page)**

# Lifestor Dunnage Rack

## ASSEMBLY INSTRUCTIONS

### Step 2 - Attach lower dunnage frame to assembly.

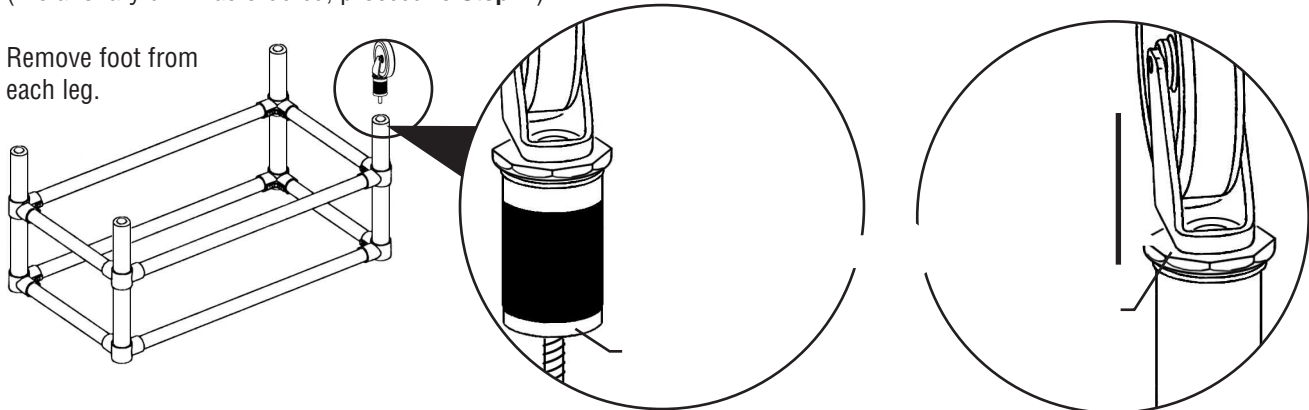
Note: Position lower dunnage frame with a minimum of 6" clearance from floor to meet NSF requirements.



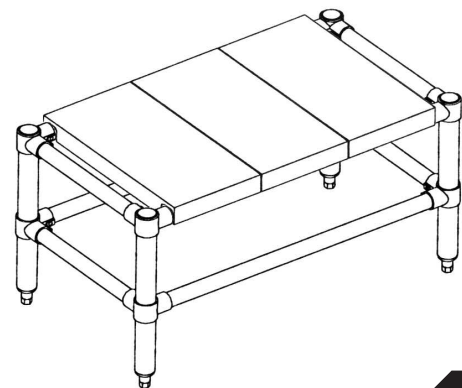
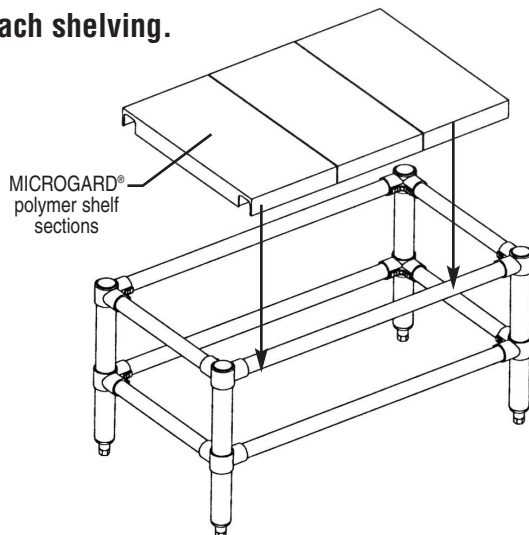
### Step 3 - (for mobile units only) Attach casters.

(If stationary unit was ordered, proceed to **Step 4.**)

Remove foot from each leg.



### Step 4 - Attach shelving.



Assembly is complete.

**(End)**