



Profit from the Eagle Advantage®

# Specification Sheet

## Short Form Specifications

Eagle Table Mounted Microwave Shelf, model \_\_\_\_\_.  
Constructed of 16/304 stainless steel with edges turned down 90 degrees on all sides. 16 gauge stainless steel support channels, and 1"-diameter type 304 stainless steel legs.



table mounted shelf  
—left side model...



...right side model...



...center model

Item No.:	_____
Project No.:	_____
S.I.S. No.:	_____

## Table Mounted Shelves

### MODELS:

- MOS1260L     MOS1260R     MOS1260C
- MOS1272L     MOS1272R     MOS1272C
- MOS1284L     MOS1284R     MOS1284C
- MOS1296L     MOS1296R     MOS1296C

- Shelf is 16 gauge type 304 stainless steel, turned down 90° on all sides.
- Mounts 16 5/8" (422mm) above tabletop.
- All stainless steel polished to #3 finish.
- Comes with six 1" (25mm)-diameter, heavy gauge type 304 stainless steel legs.
- 16 gauge stainless steel support channels reinforce shelf.
- Left side, right side, and center models available, each in four different lengths.

**EAGLE GROUP**  
 100 Industrial Boulevard, Clayton, DE 19938-8903 USA  
 Phone: 302-653-3000 • Fax: 302-653-2065  
 www.eaglegrp.com

**Foodservice Division: Phone 800-441-8440**  
**MHC/Retail Display Divisions: Phone 800-637-5100**

For custom configuration or fabrication needs, contact our **SpecFAB® Division**.  
 Phone: 302-653-3000 • Fax: 302-653-3091 • e-mail: specfab@eaglegrp.com



EG10.25 Rev. 03/09

**Spec sheets available for viewing, printing or downloading from our online literature library at [www.eaglegrp.com](http://www.eaglegrp.com)**

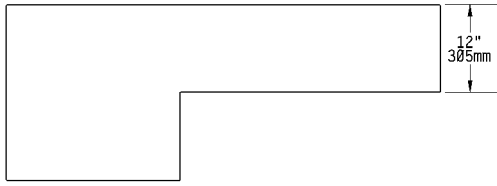
*Eagle Foodservice Equipment, Eagle MHC, SpecFAB®, and Retail Display are divisions of Eagle Group. ©2009 by the Eagle Group*



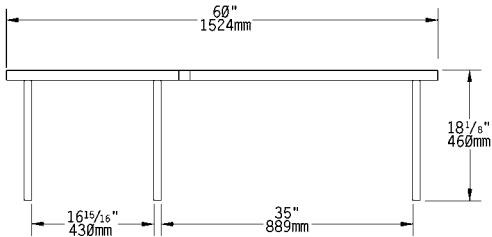
Profit from the Eagle Advantage®

Item No.: \_\_\_\_\_  
 Project No.: \_\_\_\_\_  
 S.I.S. No.: \_\_\_\_\_

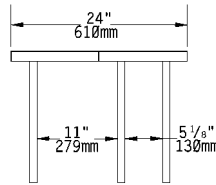
## Table Mounted Shelves



TOP VIEW



FRONT VIEW



SIDE VIEW

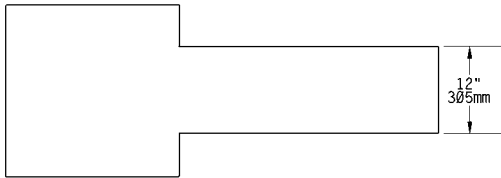
Note: 60" (1524mm) Left Side model shown.  
 For Right Side model, reverse the layout.

### LEFT SIDE MODELS

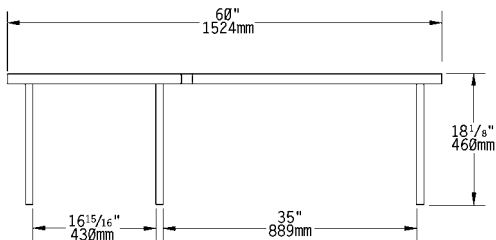
model #	width		length		weight	
	in.	mm	in.	mm	lbs.	kg
<b>MOS1260L</b>	12"	305	60"	1524	30	13.6
<b>MOS1272L</b>	12"	305	72"	1829	35	15.9
<b>MOS1284L</b>	12"	305	84"	2133	40	18.1
<b>MOS1296L</b>	12"	305	96"	2438	45	20.4

### RIGHT SIDE MODELS

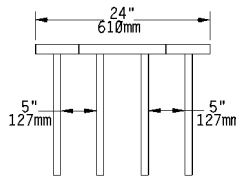
model #	width		length		weight	
	in.	mm	in.	mm	lbs.	kg
<b>MOS1260R</b>	12"	305	60"	1524	30	13.6
<b>MOS1272R</b>	12"	305	72"	1829	35	15.9
<b>MOS1284R</b>	12"	305	84"	2133	40	18.1
<b>MOS1296R</b>	12"	305	96"	2438	45	20.4



TOP VIEW



FRONT VIEW



SIDE VIEW

Note: 60" (1524mm) Center model shown

### CENTER MODELS

model #	width		length		weight	
	in.	mm	in.	mm	lbs.	kg
<b>MOS1260C</b>	12"	305	60"	1524	32	14.5
<b>MOS1272C</b>	12"	305	72"	1829	38	17.2
<b>MOS1284C</b>	12"	305	84"	2133	43	19.5
<b>MOS1296C</b>	12"	305	96"	2438	48	21.8

**EAGLE GROUP**  
 100 Industrial Boulevard, Clayton, DE 19938-8903 USA  
 Phone: 302-653-3000 • Fax: 302-653-2065  
 www.eaglegrp.com

Foodservice Division: Phone 800-441-8440  
 MHC/Retail Display Divisions: Phone 800-637-5100

Printed in U.S.A.  
 ©2009 by Eagle Group

Rev. 03/09

Spec sheets available for viewing, printing or downloading from our online literature library at [www.eaglegrp.com](http://www.eaglegrp.com)

Although every attempt has been made to ensure the accuracy of the information provided, we cannot be held responsible for typographical or printing errors. Information and specifications are subject to change without notice. Please confirm at time of order.