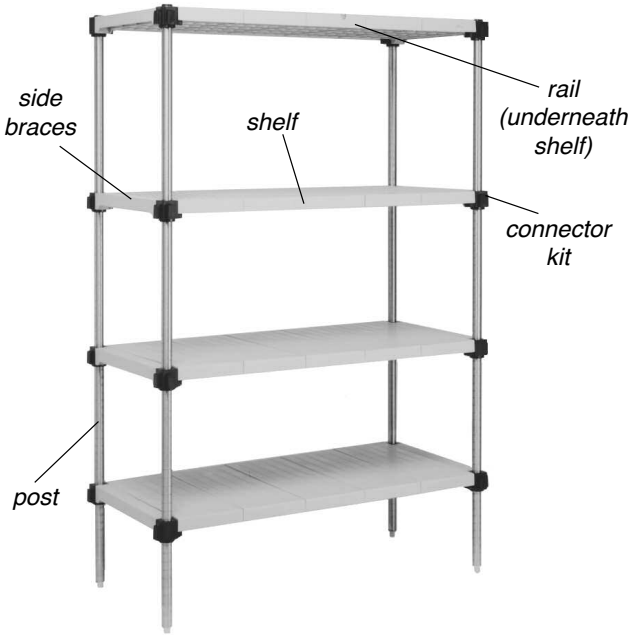




Profit from the Eagle Advantage®

# Specification Sheet



Item No.: \_\_\_\_\_  
 Project No.: \_\_\_\_\_  
 S.I.S. No.: \_\_\_\_\_

## LIFESTOR® Polymer Shelving —Components

### Posts...

Constructed of type 304 stainless steel or zinc-plated mild steel with clear antimicrobial epoxy coating. 1¼" (32mm) outside diameter, grooved at 2" (51mm) increments for easy assembly.

### ...for Stationary Use

Includes top cap and adjustable foot.

### ...for Mobile Use

Stainless steel or zinc side braces required—2 per shelf

stainless model #	EAGLEbrite® model #	stainless model #	EAGLEbrite® model #	post height in.	post height mm	weight lbs.	weight kg
PP14-S	PP14-Z	CPP14-S	CPP14-Z	14"	356	1.0	0.5
PP33-S	PP33-Z	CPP33-S	CPP33-Z	33"	383	2.0	0.9
PP54-S	PP54-Z	CPP54-S	CPP54-Z	54"	1372	3.0	1.4
PP63-S	PP63-Z	CPP63-S	CPP63-Z	63"	1600	3.5	1.6
PP74-S	PP74-Z	CPP74-S	CPP74-Z	74"	1880	4.0	1.8
PP86-S	PP86-Z	CPP86-S	CPP86-Z	86"	2184	5.0	2.3

### Shelves...

Complete with rails, side braces, solid shelf sections, and four connector kits.

#### ...for Stationary Applications

Front-to-back side braces are polymer for stationary use.

#### ...for Mobile Applications

Finish of front-to-back side braces match finish of side-to-side rails. Rails enhance stability.

shelves with stainless steel rails	shelves with EAGLEbrite® zinc rails	shelves with stainless steel rails	shelves with EAGLEbrite® zinc rails	width x length* in.	width x length* mm	weight lb.	weight kg
solid model #	solid model #	solid model #	solid model #				
S1824PSM	S1824PZM	S1824PSM-M	S1824PZM-M	18" x 24"	457 x 610	7.0	3.2
S1830PSM	S1830PZM	S1830PSM-M	S1830PZM-M	18" x 30"	457 x 762	8.5	4.6
S1836PSM	S1836PZM	S1836PSM-M	S1836PZM-M	18" x 36"	457 x 914	10.0	4.5
S1842PSM	S1842PZM	S1842PSM-M	S1842PZM-M	18" x 42"	457 x 1067	11.5	5.2
S1848PSM	S1848PZM	S1848PSM-M	S1848PZM-M	18" x 48"	457 x 1219	13.0	5.8
S1854PSM	S1854PZM	S1854PSM-M	S1854PZM-M	18" x 54"	457 x 1372	14.5	6.6
S1860PSM	S1860PZM	S1860PSM-M	S1860PZM-M	18" x 60"	457 x 1524	16.0	7.3
S2324PSM	S2324PZM	S2324PSM-M	S2324PZM-M	23" x 24"	584 x 610	8.5	4.6
S2330PSM	S2330PZM	S2330PSM-M	S2330PZM-M	23" x 30"	584 x 762	10.0	4.5
S2336PSM	S2336PZM	S2336PSM-M	S2336PZM-M	23" x 36"	584 x 914	11.5	4.8
S2342PSM	S2342PZM	S2342PSM-M	S2342PZM-M	23" x 42"	584 x 1067	13.0	5.8
S2348PSM	S2348PZM	S2348PSM-M	S2348PZM-M	23" x 48"	584 x 1219	14.5	5.7
S2354PSM	S2354PZM	S2354PSM-M	S2354PZM-M	23" x 54"	584 x 1372	16.0	8.8
S2360PSM	S2360PZM	S2360PSM-M	S2360PZM-M	23" x 60"	584 x 1524	17.5	7.9

\* Shelves up to 48" (1219mm) long hold 400 lbs. (181.4 kg). Shelves over 48" (1219mm) hold 300 lbs. (136.1 kg).

### MICROGARD® is standard on all LIFESTOR® Shelving.

MICROGARD® is an antimicrobial agent which contains built-in protection to retard the growth of a broad range of bacteria, mold and mildew on shelf surface that causes stains, odors and degradation.

### EAGLE GROUP

100 Industrial Boulevard, Clayton, DE 19938-8903 USA

Phone: 302-653-3000 • Fax: 302-653-2065

www.eaglegrp.com

Foodservice Division: Phone 800-441-8440

MHC/Retail Display Divisions: Phone 800-637-5100

For custom configuration or fabrication needs, contact our SpecFAB® Division.

Phone: 302-653-3000 • Fax: 302-653-2065 • e-mail: quotes@eaglegrp.com

### Certifications / Approvals



on Posts, Shelves, Rails, and Add-On Kits.



AutoQuotes



Spec sheets available for viewing, printing or downloading from our online literature library at [www.eaglegrp.com](http://www.eaglegrp.com)

Eagle Foodservice Equipment, Eagle MHC, SpecFAB®, and Retail Display are divisions of Eagle Group. ©2018 by the Eagle Group



Item No.: \_\_\_\_\_  
 Project No.: \_\_\_\_\_  
 S.I.S. No.: \_\_\_\_\_

# LIFESTOR® Polymer Shelving—Components



caster

## Casters

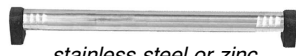
Use in conjunction with #CPP caster posts (on front page) only.

**Note:** All mobile applications must use stainless steel or EAGLEbrite® (zinc) clear epoxy coated side braces, two per shelf.

model #	description	weight lbs. kg
A205340	5" (127mm)-dia., swivel, heavy-duty, 250 lb. (113 kg) cap., urethane	3.0 1.4
A205341	same as above with brake	3.5 1.6
A205342	5" (127mm) rotary bumper	1.0 0.5



polymer side brace  
(for stationary use)



stainless steel or zinc  
side brace (for mobile use)

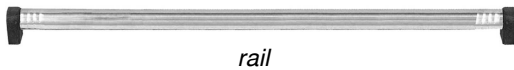
## Replacement Side Braces (front-to-back)

Two per shelf required.

...for Stationary Use polymer			zinc		stainless		shelf width	
model #	weight lbs. kg		model #	weight lbs. kg	model #	weight lbs. kg	in.	mm
A216246	0.8 0.4		A211331	1.2 0.5	A216240	1.2 0.5	18"	457
A216247	1.0 0.5		A211332	1.5 0.7	A216241	1.5 0.7	23"	584

## Rails (side-to-side)

Constructed of type 304 stainless steel or zinc-plated mild steel with clear antimicrobial epoxy coating. Each end fits securely into a lug.



rail

stainless model #	EAGLEbrite® model #	fits		post		weight	
		shelf length in.	mm	height in.	mm	lbs.	kg
A215051	A215152	24"	610	18 <sup>3</sup> / <sub>16</sub> "	478	1.4	0.6
A215052	A215153	30"	762	24 <sup>3</sup> / <sub>16</sub> "	631	1.8	0.8
A215053	A215154	36"	914	30 <sup>3</sup> / <sub>16</sub> "	783	2.1	0.9
A215054	A215155	42"	1067	36 <sup>3</sup> / <sub>16</sub> "	935	2.5	1.1
A215055	A215156	48"	1219	42 <sup>3</sup> / <sub>16</sub> "	1087	2.8	1.3
A215056	A215157	54"	1372	48 <sup>3</sup> / <sub>16</sub> "	1240	3.2	1.5
A215057	A215158	60"	1524	54 <sup>3</sup> / <sub>16</sub> "	1392	3.5	1.6



2-sided lug



4-sided lug



"U" connector

## Connectors

model #	description	weight lbs. kg
A208137	2-connector	0.4 0.2
A208139	4-connector	0.4 0.2
A208140	"U" connector	0.2 0.1

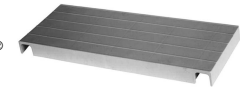
## "L" or "T" Add-On Kits

Consist of "U" connector and notched shelf section. Features MICROGARD® protection. For add-on units, see spec #EG01.12B.

model #	shelf width		weight	
	in.	mm	lbs.	kg
18-SM	18"	457	2.0	0.9
23-SM	23"	584	2.5	1.1

## Shelf Sections

Green polymer. Features MICROGARD® protection.



model #	shelf width		weight	
	in.	mm	lbs.	kg
A216242	18"	457	1.9	0.9
A216243	23"	584	2.4	1.1



split sleeve



adjustable foot



post cap

## Miscellaneous

model #	description
A208141	split sleeve (must be ordered as separate component)
A208143	adjustable foot
314287	cap

## EAGLE GROUP

100 Industrial Boulevard, Clayton, DE 19938-8903 USA

Phone: 302-653-3000 • Fax: 302-653-2065

www.eaglegrp.com

Foodservice Division: Phone 800-441-8440

MHC/Retail Display Divisions: Phone 800-637-5100

Spec sheets available for viewing, printing or downloading from our online literature library at [www.eaglegrp.com](http://www.eaglegrp.com)

Although every attempt has been made to ensure the accuracy of the information provided, we cannot be held responsible for typographical or printing errors. Information and specifications are subject to change without notice. Please confirm at time of order.

Printed in U.S.A.  
©2018 by Eagle Group

Rev. 06/18